



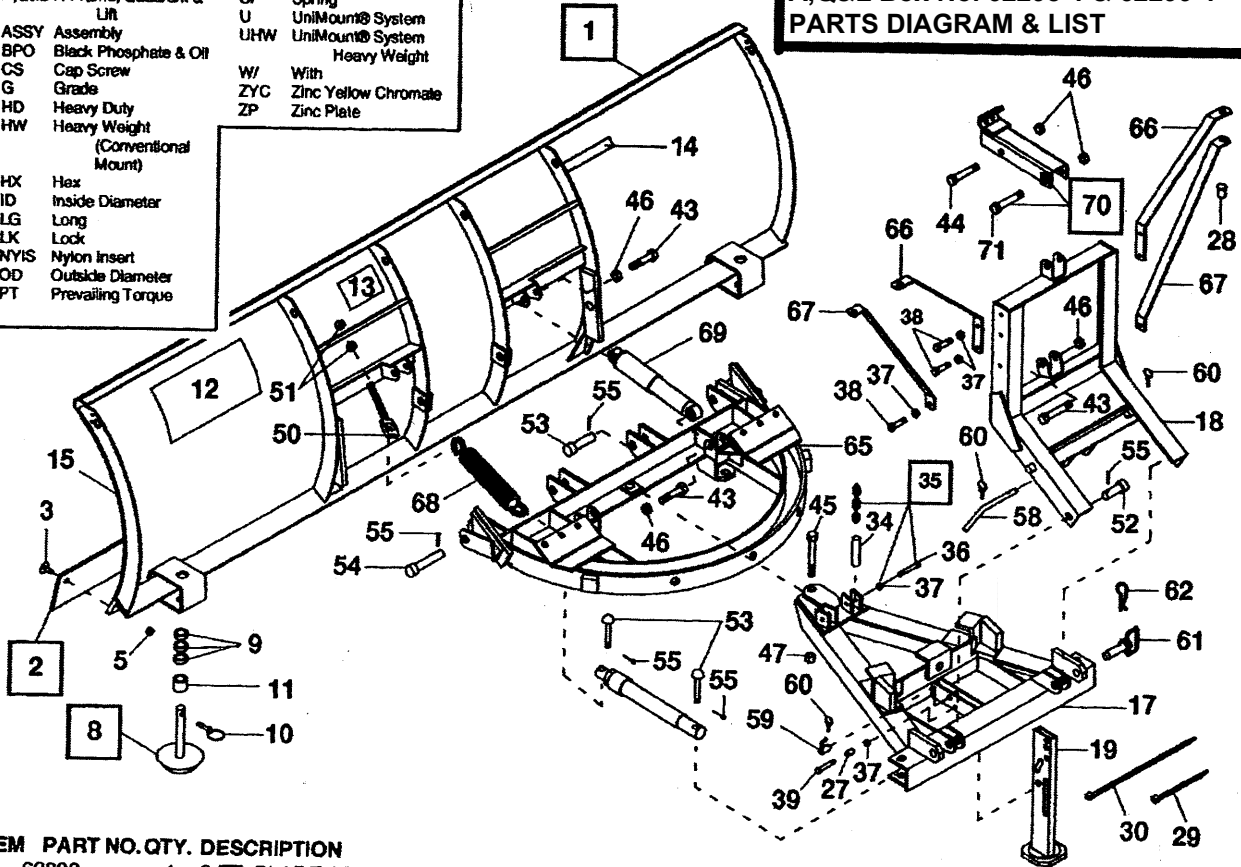
WESTERN PRODUCTS
 P.O. BOX 245038
 MILWAUKEE, WISCONSIN 53224-9538

UniMount A DIVISION OF DOUGLAS DYNAMICS, L.L.C.

Plow Assembly w/ HEAVYWEIGHT Blade
 Blade No. 62301 or 62302
 A,Q&L Box No. 62298-1 & 62299-1
 Hydraulics Box No. 64400
 Headlamp Kit No. 61540
 June 1, 2009

Blade No. 62301 or 62302
 A,Q&L Box No. 62298-1 & 62299-1
PARTS DIAGRAM & LIST

| Abbreviations | | | |
|---------------|-----------------------------------|-----|-------------------------------|
| #3HD | Number 3 Head | S | Standard Plow |
| A,Q&L | A-Frame, Quadrant & Lift | SP | Spring |
| ASSY | Assembly | U | UniMount® System |
| BPO | Black Phosphate & Oil | UHW | UniMount® System Heavy Weight |
| CS | Cap Screw | W/ | With |
| G | Grade | ZYC | Zinc Yellow Chromate |
| HD | Heavy Duty | ZP | Zinc Plate |
| HW | Heavy Weight (Conventional Mount) | | |
| HX | Hex | | |
| ID | Inside Diameter | | |
| LG | Long | | |
| LK | Lock | | |
| NYIS | Nylon Insert | | |
| OD | Outside Diameter | | |
| PT | Prevailing Torque | | |



| ITEM | PART NO. | QTY. | DESCRIPTION |
|------|----------|------|--------------------------------------|
| 1 | 62890 | 1 | 9 FT. BLADE ASSY UHW |
| | 62891 | 1 | 10 FT. BLADE ASSY UHW |
| 2 | 58817 | 1 | CUTTING EDGE ASSY 9' UHW HW |
| | 58818 | 1 | CUTTING EDGE ASSY 10' UHW HW |
| 3 | 90396 | * | 5/8-11X2 #3HD PLOW BOLT G5 BPO |
| 5 | 5573 | * | 5/8-11 HX NUT PT NYIS ZYC |
| 8 | 49071 | 2 | HD DISC SHOE ASSY UHW HW OLD S |
| 9 | 91109 | 52 | WASHER - SPECIAL ZYC |
| 10 | 93010K | 2 | LINCH PIN 7/16" X 1-3/4" |
| 11 | 60045 | 2 | SPACER |
| 12 | 61740 | 1 | LABEL - INFORMATION (Link Arm Style) |
| 13 | 59900 | 1 | LABEL - INFORMATION (WARNING) |
| 14 | 28404 | 1 | LABEL - IDENTITY, ULTRAFINISH™ |
| 15 | 64575 | 1 | LABEL - IDENTITY, CONTRACTOR GRADE |
| ns | 28547 | 1 | BLADE LABEL KIT UniMount® |
| | 62298-1 | 1 | A, Q & L ASSY UHW (BOX 1 OF 2) |
| 17 | 62170 | 1 | A-FRAME UHW |
| 18 | 62185 | 1 | LIFT FRAME UHW |
| 19 | 62199 | 1 | STAND UHW |
| 27 | 61487 | 1 | SPACER .56 OD X .39 ID X .965 LG |
| 28 | 61482 | 2 | VINYL CAP 1/2 X 1/2 |
| 29 | 59223 | 5 | CABLE TIE |
| 30 | 61538 | 3 | CABLE TIE - LONG |
| 34 | 65508 | 2 | PLASTIC TUBE |
| 35 | 49263 | 1 | REPLACEMENT CHAIN ASSY UHW HW |
| 36 | 90063 | 2 | 3/8-16X3 HX CS G8 ZP |
| 37 | 91333 | 2 | 3/8-16 PT HX LK NUT NYIS ZYC |
| | 91333 | 7 | 3/8-16 PT HX LK NUT NYIS ZYC |
| 38 | 90040 | 6 | 3/8-16X1-1/4 HX CS G5 ZYC |
| 39 | 90043 | 1 | 3/8-16X2 HX CS G5 ZYC |
| 43 | 90159 | 5 | 3/4-10X3-1/2 HX CS G5 ZYC |
| 44 | 90161 | 1 | 3/4-10X4 HX CS G5 ZYC |

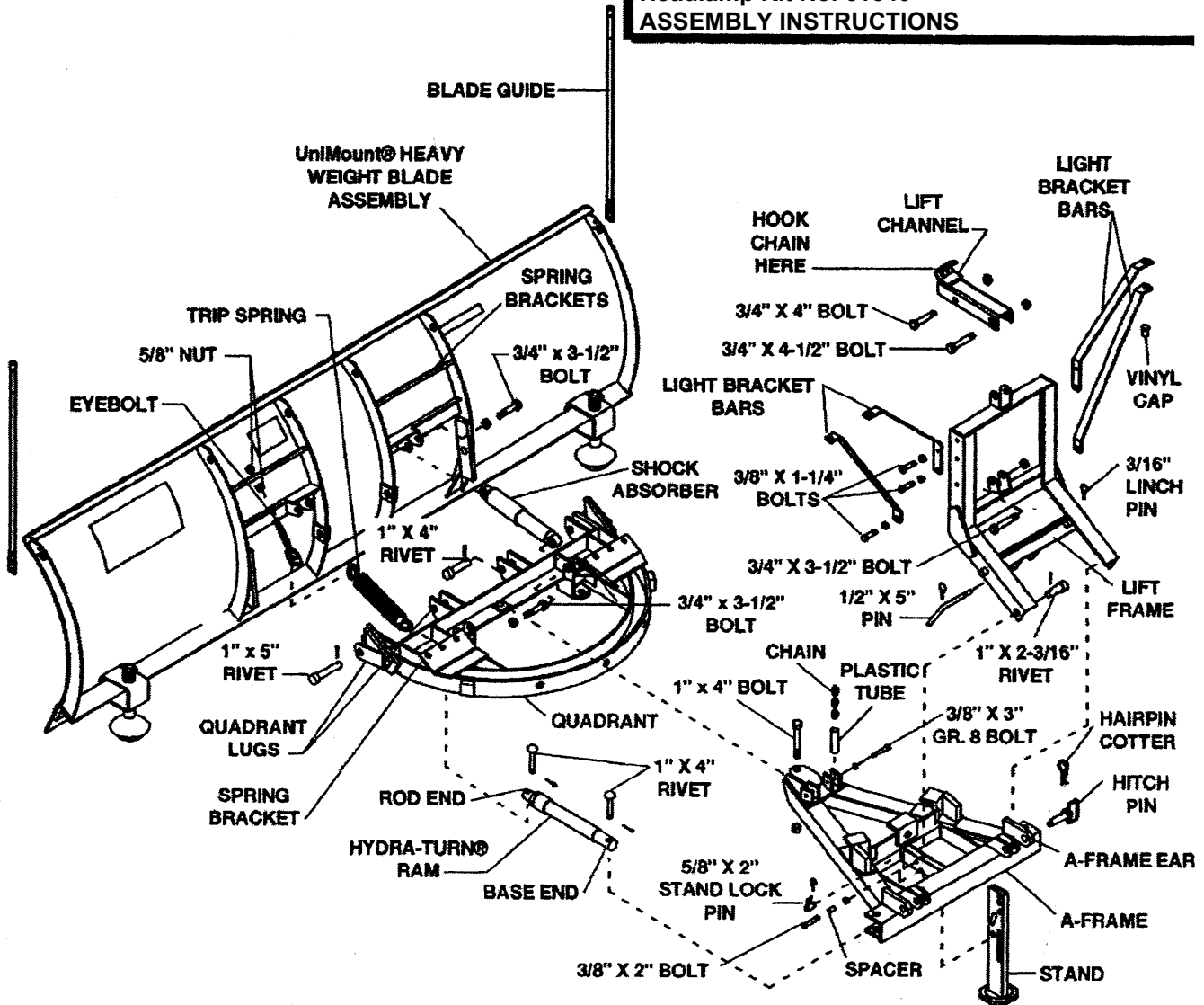
| ITEM | PART NO. | QTY. | DESCRIPTION |
|------|----------|------|--------------------------------|
| 45 | 90176 | 1 | 1-8X4 HX CS G2 ZP |
| 46 | 91338 | 7 | 3/4-10 PT HX LK NUT NYIS ZYC |
| 47 | 91340 | 1 | 1-8 PT HX LK NUT NYIS ZP |
| 50 | 90493K | 6 | EYEBOLT W/ 2-91416 NUTS |
| 51 | 91416 | 2 | 5/8-11 HX NUT ZYC |
| 52 | 93072 | 2 | RIVET 1" X 2-3/16" G5 ZYC |
| 53 | 93077K | 6 | RIVET 1" X 4" |
| 54 | 93080 | 2 | 1X5 RIVET G5 ZP |
| 55 | 91911 | 10 | 5/32 X 1-1/2 COTTER PIN ZYC |
| 58 | 93033K | 1 | PIN 1/2" X 5" |
| 59 | 93034K | 1 | STAND LOCK PIN 5/8" X 2" |
| 60 | 93042K | 4 | LINCH PIN 3/16" |
| 61 | 93028K | 2 | HITCH PIN 1" X 3-1/2" |
| 62 | 91965K | 2 | HAIRPIN COTTER 5/32" |
| | 62299-1 | 1 | A, Q & L ASSY UHW (BOX 2 OF 2) |
| 65 | 62190 | 1 | QUADRANT UHW |
| 66 | 63532 | 2 | LIGHT BRACKET TOP U |
| 67 | 63533 | 2 | LIGHT BRACKET BOTTOM U |
| 68 | 23039 | 6 | TRIP SPRING |
| 69 | 60338 | 2 | SHOCK ABSORBER ASSEMBLY |
| 70 | 62154 | 1 | LIFT CHANNEL KIT UHW |
| 71 | 90160 | 1 | 3/4-10X4-1/2 HX CS G5 ZP |

Parts listed above may be found in the following:
 62282 1 PARTS BAG ASSY (62300)

| Service Parts Kit | Part No. | Description |
|-------------------|----------|--------------------------------------------------------------------------------|
| 61941K | 1 | UniMount® RETAINER PIN KIT (Includes 4 each of item 62 and 2 each of item 60.) |
| 28547 | 1 | BLADE LABEL KIT, UniMount |

* Cutting Edge Assembly Fasteners: For 9' - 11 each, For 10' - 12 each.
 Indented parts are included in the assembly under which they are listed. Quantities shown are included with the assembly.

HEAVYWEIGHT Blade No. 62301 or 62302
 15,000 to 27,000 lb Vehicle
 A,Q&L Box No. 62298-1 & 62299-1
 Hydraulics Box No. 64400
 Headlamp Kit No. 61540
ASSEMBLY INSTRUCTIONS



Plow Assembly With Heavy Weight Blade

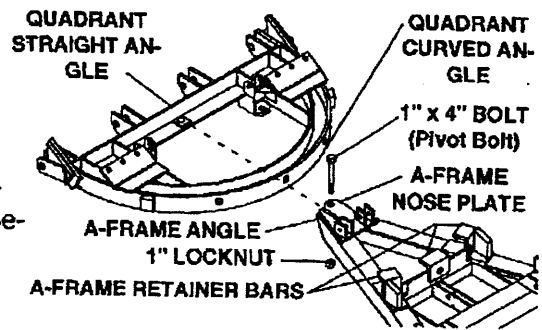
IMPORTANT: Read instructions before assembling. Bolts should be finger tight until instructed to tighten. Use standard methods and practices when attaching snowplow.

Assembling Quadrant to Blade

1. Lay blade face down on cardboard on the floor. Assemble the quadrant to the blade with the four pairs of quadrant lugs straddling the blade rib. Secure each of the center two pairs of lugs with a 1" x 4" rivet and cotter pin. Secure each of the outer pairs of lugs with a 1" x 5" rivet and cotter pin.
2. Thread one 5/8" nut halfway down on each of six eyebolts. Hook a spring to each of the quadrant spring brackets indicated in the above diagram. Hook an eyebolt to the other end of each trip spring. Push the threaded ends of the eyebolts through the holes in the flat bar spring brackets on the blade. Install a second nut on each eyebolt. Tighten the top nuts until the coils of the trip springs begin to separate (a piece of paper such as this instruction sheet should pass between the second and third coils). Tighten the bottom nut against the blade flat bar spring brackets to lock in place.
3. Position the large shielded end of each shock absorber between the lugs on each side of the blade. Secure each shock absorber with a 3/4" x 3-1/2" bolt, installed from the outside, and locknut. Place the other end of each shock absorber into the U-bracket on the quadrant and secure each one with a 3/4" x 3-1/2" bolt, installed from the outside, and locknut. Tighten all bolts.

Assembling A-Frame to Quadrant

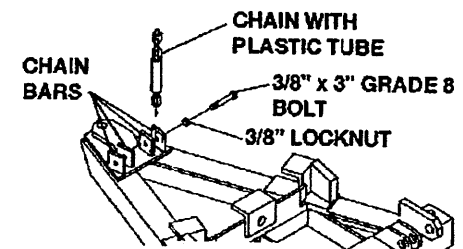
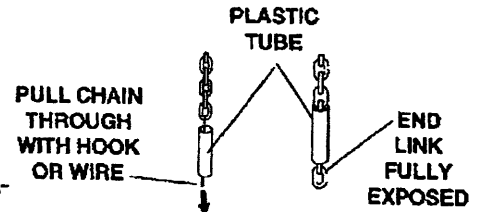
1. Straddle the quadrant straight angle between the A-frame nose plate and the A-frame angle, and at the same time, hook the A-frame retainer bars over the curved angle of the quadrant. Install a 1" x 4" pivot bolt from the top through the holes in the A-frame nose plate, quadrant straight angle, and A-frame angle. Secure with a 1" locknut.



A-FRAME TO QUADRANT ASSEMBLY

A-frame to Quadrant Pivot Bolt Adjustment

- A. Tighten pivot bolt to compress quadrant tab against nose plate until the A-frame will NOT move.
 - B. Loosen pivot bolt until A-frame moves freely.
2. Use a hook or piece of wire to pull each end of the chain through a plastic tube. End links of the chain should be fully exposed.
 3. Place each end link of the chain between a pair of chain bars on the A-frame nose plate. Secure each end of chain with a 3/8" x 3" grade 8 bolt and locknut.
 4. Position the rod ends of the two Hydra-Turn® rams (found in hydraulics box) to the brackets on the bottom of the straight angle of the quadrant. Attach the rod end of each ram to the quadrant with a 1" x 4" rivet installed from the top down and secured with a cotter pin.
 5. Swing the A-frame to one side. Position the base end of a Hydra-Turn® ram into the bracket on the side of the A-frame. Make sure the threaded port is facing up. Insert a 1" x 4" rivet from the top down and secure with a cotter pin. Remove the pipe plug from the threaded port.
 6. Swing the A-frame to the other side and repeat step 4 to connect the other ram to the A-frame.

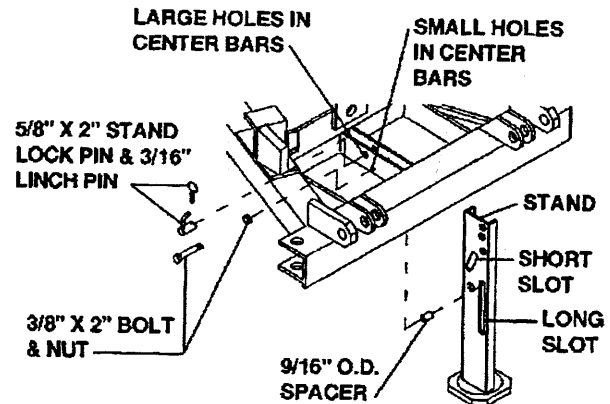


CHAIN ATTACHMENT TO A-FRAME

Assembling Stand to A-frame

If stand is already installed, proceed to step 5 of this section.

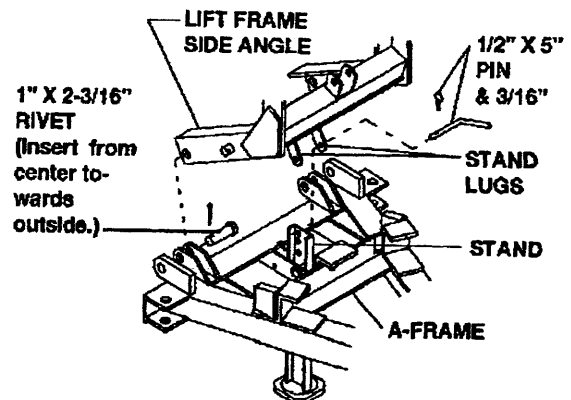
1. Position the stand next to the center bars of the A-frame with the long slot towards the wide end of A-frame.
2. Insert the 9/16" O.D. spacer into the top end of the long slot in the stand.
3. Holding spacer in place with a finger, insert the stand between the A-frame center bars and align spacer with small hole in center bars.
4. Secure spacer with a 3/8" x 2" bolt, inserted from the driver side, and locknut.
5. Hold stand perpendicular to A-frame. Align short slot in stand with large hole in center bars, and insert the 5/8" x 2" stand lock pin. Secure stand lock pin with a 3/16" lynch pin.
6. Rotate the plow assembly into plowing position.



ASSEMBLING STAND TO A-FRAME

Assembling Lift Frame to A-frame

1. Lay lift frame on floor with curve up and ends of side angles positioned next to wide end of A-frame. Raise end of lift frame and align holes in side angles between inner pairs of lugs on wide end of A-frame.
2. Secure lift frame to A-frame lugs with two 1" x 2-3/16" rivets inserted from the inside. Secure with cotter pins.
3. Rotate lift frame to align holes in stand lugs to bottom hole of three hole pattern in top of stand. Secure with a 1/2" x 5" pin and 3/16" lynch pin.

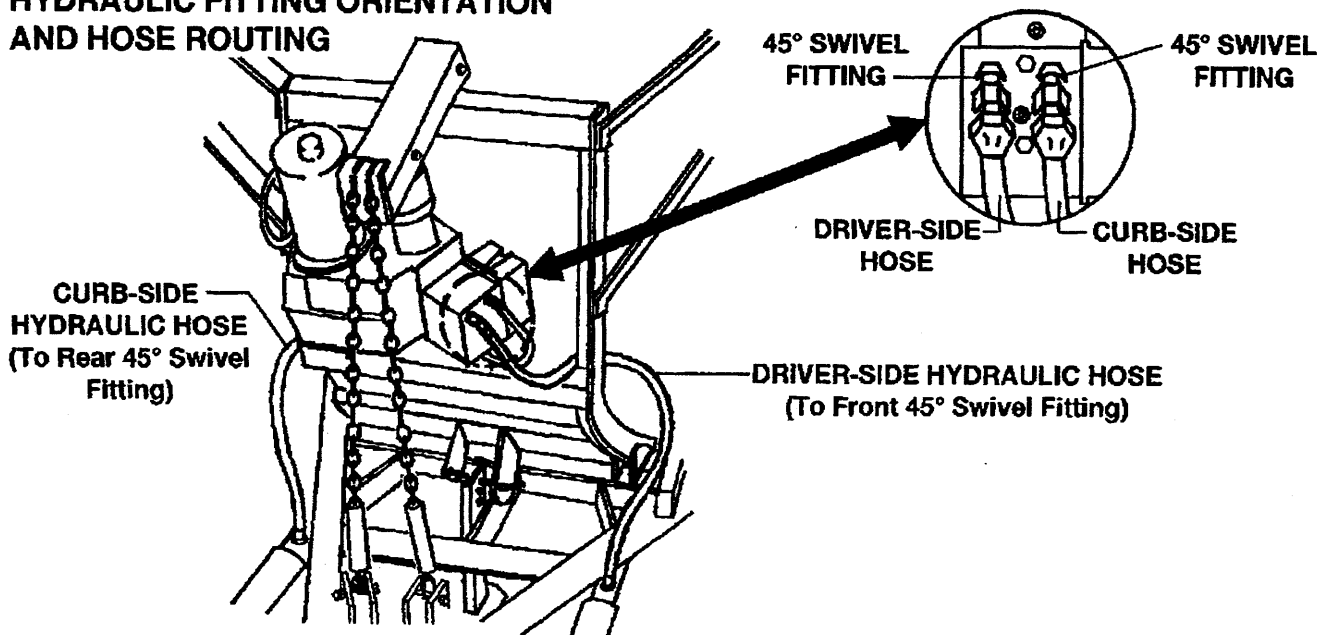


LIFT FRAME PINNED TO A-FRAME & STAND

Assembling Lift Channel and Hydraulic Unit to Lift Frame.

1. Place the hole end of the lift channel over the lugs of the upper U-bracket on the lift frame. Insert a 3/4" x 4-1/2" bolt and secure with a locknut. **DO NOT OVERTIGHTEN** - lift channel must pivot freely.
2. Position the hydraulic unit (found in hydraulics box), nameplate towards blade, with the base lug between the lugs of the lower U-bracket on the lift frame. Attach with a 3/4" x 3-1/2" bolt and locknut. **DO NOT OVERTIGHTEN** - hydraulic unit must pivot freely.
3. Align hole in hydraulic unit lift ram with hole near hook on lift channel and attach with a 3/4" x 4" bolt and locknut. **DO NOT OVERTIGHTEN** - lift channel must pivot freely.
4. Place mid point of chain loop into hooks of lift channel. (Final chain adjustment will be made after plow is mounted on vehicle).

HYDRAULIC FITTING ORIENTATION AND HOSE ROUTING

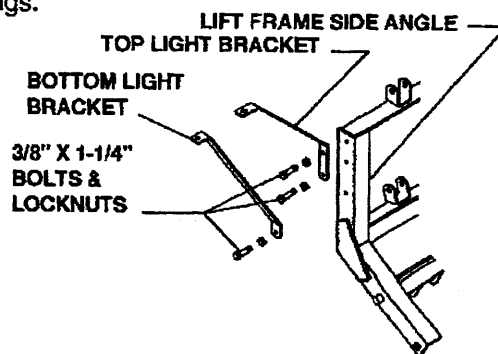


Assembling Hydraulic Fittings and Hoses

1. (Hoses and fittings in Hydraulics Box) Remove top two 1/4" pipe plugs from front face of valve on hydraulic unit. Install two 45° swivel fittings into pipe plug holes. Tighten fittings so the hose connections will be straight down in line with valve body. (See inset on this page.)
 2. Install a hose into the port on top of each Hydra-Turn™ ram base. Tighten each hose.
 3. Route both hoses behind the lift frame.
 4. Attach hoses to 45° swivel fitting on hydraulic unit as follows:
Curb-side hose to rear 45° swivel fitting.
Driver-side hose to front 45° swivel fitting.
Remove twists from both hoses and tighten swivel connections.
- DO NOT** use pipe tape/sealant when connecting hoses to swivel fittings.

Assembling Light Brackets and Headlamps

1. Align two holes of two top light brackets with the top two holes in lift frame side angles. Loosely attach with two 3/8" x 1-1/4" bolts and locknuts on each side.
2. Loosely attach the small hole end of each bottom light bracket to the lowest hole in each lift frame side angle with a 3/8" x 1-1/4" bolt and locknut on each side.



LIGHT BRACKET INSTALLATION

3. Assemble headlamps (found in headlamp kit) to the light brackets, placing the headlamp swivel above the bracket. Loosely attach with lock washers and nuts below the brackets.
Aim headlamps when plow is attached to vehicle.
4. Tighten bolts holding light brackets to lift frame.
5. Install vinyl caps on headlamp mounting studs.

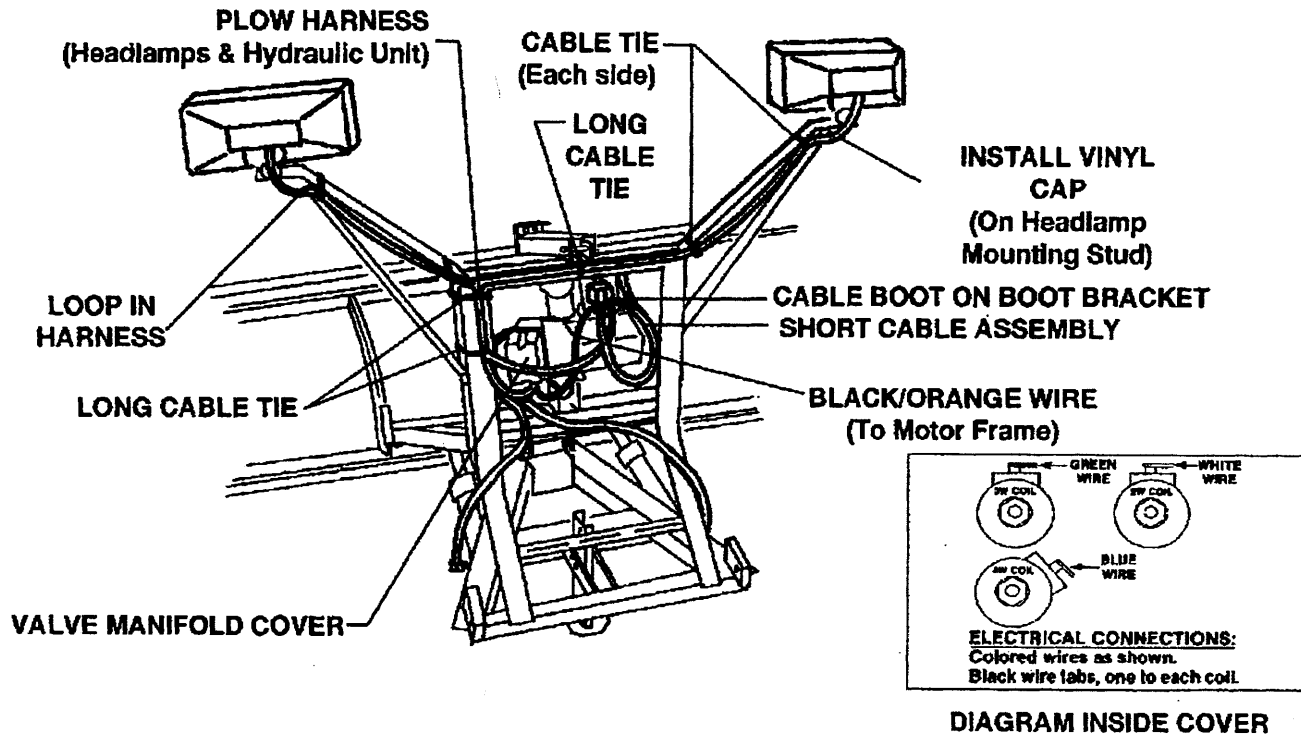


DIAGRAM INSIDE COVER

Assembling Hydraulic Unit Wiring.

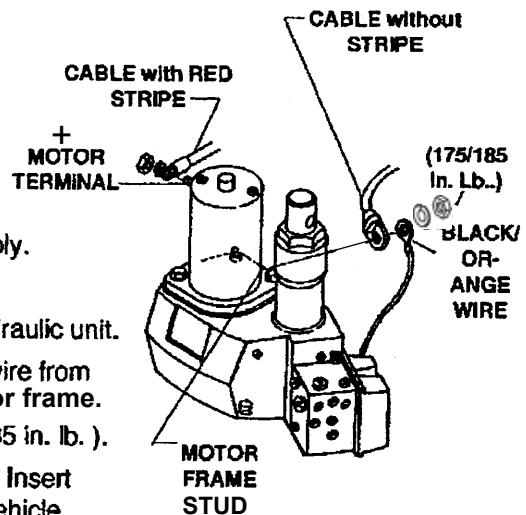
1. Route wiring harness from headlamps along top light brackets and across back of lift frame to driver-side of lift frame. Use any excess harness to make a loop under each headlamp. Secure harness to each light bracket with two short cable ties, and to top angle of lift frame with a long cable tie.
2. Remove cover from valve manifold on hydraulic unit. Route branch of harness with loose wires to manifold. Apply dielectric grease (P.N. 56099) (furnished in hydraulics box) into the opening of each wire terminal before connecting to coil terminals as shown on label inside of cover. NOTE: dielectric grease has been applied to coil terminals. DO NOT wipe off terminals.
3. With harness strain relief inside cover at slot and black/orange wire outside of cover, replace cover and secure with screws.
4. Allowing slack in harness to hydraulic unit, secure harness to inside of lift frame side rail with two long cable ties.

Assembling Battery Cable to Motor

Apply a light coating of dielectric grease to connectors before assembly.

All parts installed in this section are found in the hydraulics box.

1. Attach short battery cable with red stripe to motor terminal on hydraulic unit.
2. Attach short battery cable without a stripe and the black/orange wire from under valve manifold cover to ground stud on side of the motor frame.
(torque to 175/185 in. lb.)
3. Slide small pocket of cable boot onto vertical tab of boot bracket. Insert harness plugs into boot for storage when plow is removed from vehicle.

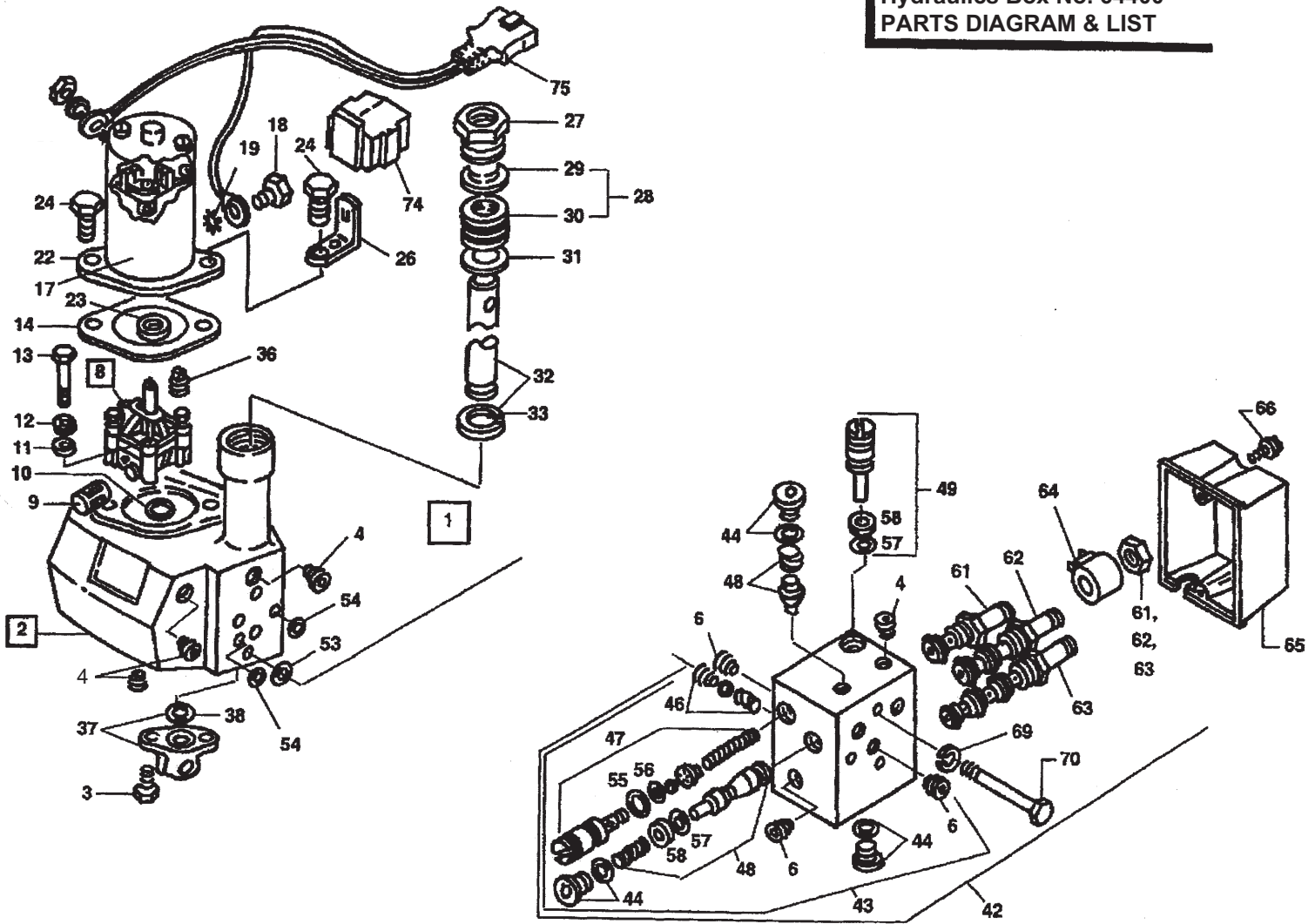


Blade Guides

Install blade guides following instructions shown on last page of these instructions.

NOTE: Retain dielectric grease tube for use during vehicle mount installation. Pass tube on to end user.

Hydraulics Box No. 64400
PARTS DIAGRAM & LIST

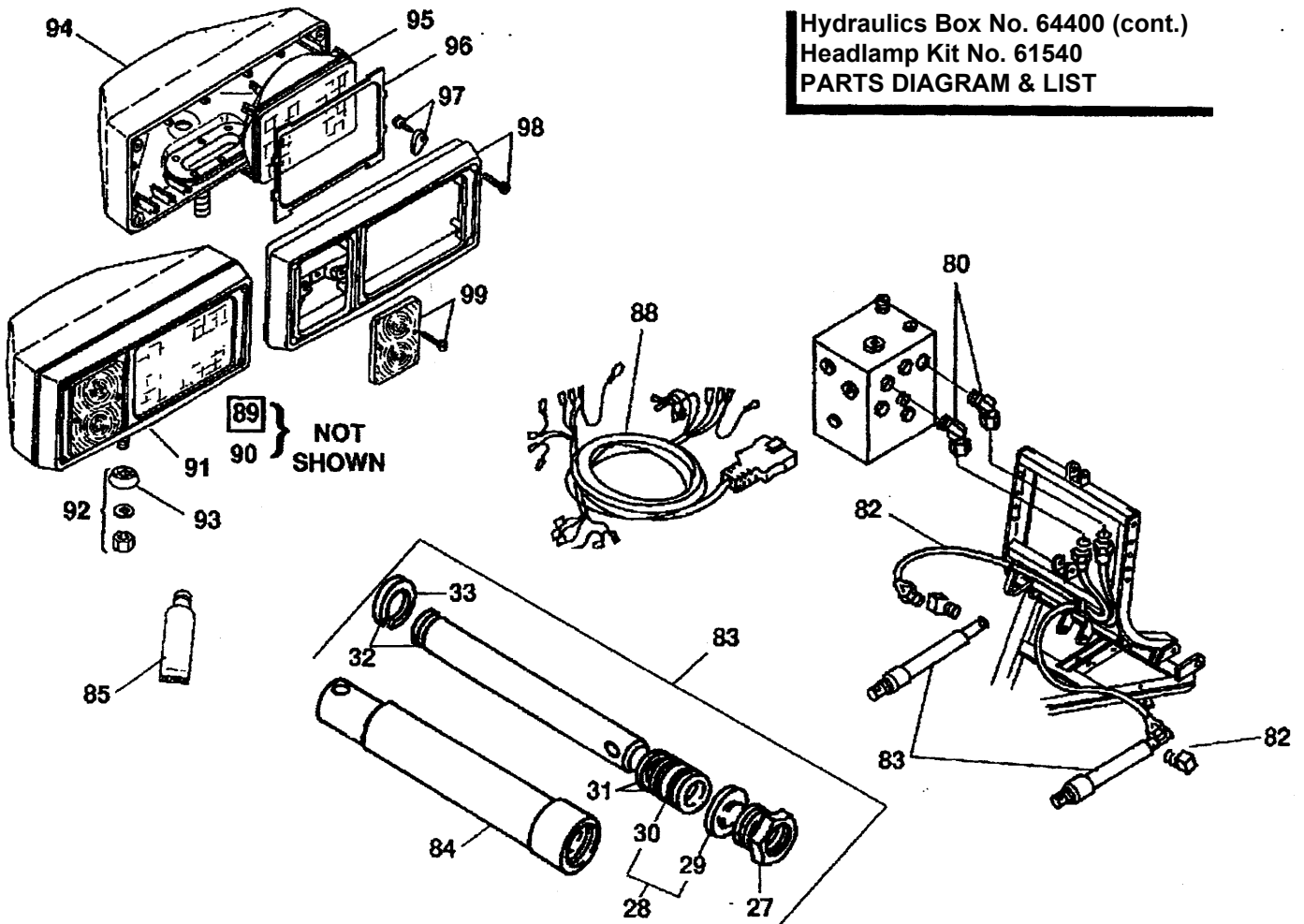


| ITEM | PART NO. | QTY. | DESCRIPTION |
|------|----------|------|--------------------------------|
| 1 | 49253* | 1 | HYDRAULIC UNIT 1-1/2" SOL 3500 |
| 2 | 49252 | 1 | SERVICE HOUSING KIT 1-1/2" SOL |
| 3 | 93166 | 2 | 5/16-18X1-1/4 HXW TRTS TY TR-3 |
| 4 | 92095 | 3 | PLUG 1/4NPTF HX SO THREAD SEAL |
| 8 | 49211* | 1 | PUMP KIT DIE CAST |
| 9 | 56185K | 1 | SUCTION FILTER |
| 10 | 25620 | 1 | O-RING - 115 |
| 11 | 91101 | 2 | 1/4 PLAIN WASHER TY A STD ZP |
| 12 | 91220 | 2 | BELLEVILLE SPRING WASHER |
| 13 | 90025 | 2 | 5/16-18X2-1/4 HX CS G5 ZP |
| 14 | 25861K | 1 | GASKET |
| 17 | 56133 | 1 | MOTOR ASSY 4-1/2" |
| 18 | 90088 | 1 | 5/16-19X1/2 HX CS 18-8 STS |
| 19 | 91263 | 1 | 5/16 EX TOOTH LK WASHER STS |
| 22 | 49084 | 1 | MOTOR FLANGE BRG & SEAL |
| 23 | 49014 | 1 | OIL SEAL |
| 24 | 90066 | 2 | 7/16-14X1-1/4 HX CS G5 ZP |
| 26 | 56356 | 1 | BOOT BRACKET |
| 27 | 25944K | 1 | PACKING NUT 1-1/2" |
| 28 | 25205K | 1 | PACKING SET W/WIPER 1-1/2" |
| 29 | 55137 | 1 | WIPER RING - 1-1/2" |
| 30 | 55136 | 1 | PACKING SET 1-1/2" |
| 31 | 338 | 1 | WASHER - SPECIAL |
| 32 | 25202 | 1 | PLUNGER KIT 1-1/2 X 6 |
| 33 | 48414 | 1 | 1-1/2" Spiral Retaining Ring |

| ITEM | PART NO. | QTY. | DESCRIPTION |
|------|-----------|------|-----------------------------------------|
| 36 | 92079 | 1 | PLUG 3/8 NPTF SQ |
| 37 | 25968K | 1 | BASE LUG W/#25618 O-RING |
| 38 | 25618 | 1 | O-RING - 216 |
| 42 | 49265 | 1 | VALVE MANIFOLD ASSY SOL 3500 |
| 43 | 49224 | 1 | MANIFOLD ASSY SOL 3500 (W/O CARTRIDGES) |
| 44 | 92960 | 3 | 3/8-24 HX SO O-RING BOSS PLUG |
| 6 | 92071 | 3 | PLUG 1/8 NPTF HX SO |
| 4 | 92095 | 1 | PLUG 1/4 NPTF HX SO THREAD SEAL |
| 46 | 49225 | 1 | INLET CHECK VALVE KIT |
| 47 | 49138K-21 | 1 | CUSHION VALVE REPAIR KIT-SET |
| 48 | 49226K | 1 | POPPET CHECK VALVE KIT |
| 49 | 56330 | 1 | QUILL ASSY |
| | 56657-2 | 1 | BACK-UP/ O-RING KIT - SOL |
| 53 | 56274 | 1 | O-RING - 013 |
| 54 | 25730 | 2 | O-RING - 012 |
| 55 | 25731 | 2 | O-RING - 010 |
| 56 | 55371 | 2 | O-RING - 008 |
| 57 | 25622 | 2 | O-RING - 006 |
| 58 | 56315 | 2 | BACK-UP RING - 006 PARBAK SPLIT |
| 61 | 49227K-21 | 1 | CARTRIDGE 20 W/JAM NUT |
| | 49258-21 | 1 | SEAL KIT - CARTRIDGE 20 |
| 62 | 49228K-11 | 1 | CARTRIDGE 30 W/JAM NUT |
| 63 | 49229K-11 | 1 | CARTRIDGE 40 W/JAM NUT |
| | 49259-22 | 1 | SEAL KIT - CARTRIDGE 30, 33 & 40 |
| 64 | 49230K-23 | 1 | COIL W/SPADE TERMINALS |
| 65 | 56291 | 1 | COVER ASSY |
| 66 | 90650 | 2 | #8-18X1/2 SL HXW Tfts TY B ZP |

* Service units require setting pump pressure to 1,800 - 2,000 PSI.
(Turn pressure relief screw in 1/4 turn.)

Hydraulics Box No. 64400 (cont.)
 Headlamp Kit No. 61540
PARTS DIAGRAM & LIST



ITEM PART NO. QTY. DESCRIPTION

| | | | |
|----|--------|---|--------------------------------------------|
| 75 | 61168 | 1 | PLOW CABLE ASSY |
| 80 | 92190K | 2 | SWIVEL HOSE FITTING 1/4" X 45° |
| 82 | 55020K | 2 | PRESSURE HOSE 1/4" X 38" |
| 83 | 25878 | 2 | RAM ASSY 2" X 16" |
| 27 | 25948 | 1 | PACKING NUT 2" |
| 28 | 25215 | 1 | PACKING SET W/WIPER 2" |
| 29 | 55210 | 1 | WIPER RING 2" |
| 30 | 55209 | 1 | PACKING RING 2" |
| 31 | 91174 | 2 | WASHER - SPECIAL 2" |
| 32 | 25703 | 1 | PLUNGER KIT 2" X 16" |
| 33 | 48413 | 1 | RETAINER RING 2" |
| 84 | 25949 | 1 | CYLINDER 2" X 16" |
| 85 | 56099 | 1 | DIELECTRIC GREASE |
| 88 | 61438 | 1 | PLOW HARNESS 9 PIN U |
| | 61558 | 1 | PLOW HARNESS 12 PIN U |
| 89 | 61543 | 1 | HEADLAMP PAIR U (Without Plow Harness) |
| 90 | 61541 | 1 | HEADLAMP DR U |
| 91 | 61542 | 1 | HEADLAMP CU U |
| 92 | 49151 | 1 | SWIVEL AND HARDWARE ASSY |
| 93 | 49012 | 1 | HEADLAMP SWIVEL |
| 94 | 49298 | 1 | HEADLAMP HOUSING ASSY (Fits DR OR CU side) |
| 95 | 49297 | 1 | REPLACEMENT SEALED BEAM (2E1) |
| 96 | 49210 | 1 | HEADLAMP GASKETS (1 PAIR) |
| 97 | 49201 | 1 | RETAINING FINGER & FASTENER (4 EA) |
| 98 | 49203 | 1 | BEZEL W/FASTENERS (DR OR CU SIDE) |
| 99 | 49202 | 1 | PARK/TURN LENS W/FASTENERS |

NOT SHOWN

4 PARK/TURN SIGNAL BULB - (TRADE NUMBER 1157)

NOTE: Only those items listed with a **PART NUMBER** are available for service.

Abbreviations

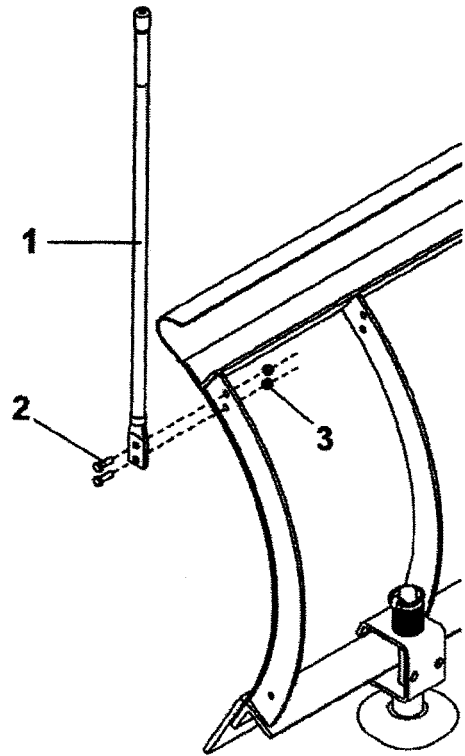
| | |
|------|------------------------------|
| ASSY | Assembly |
| BRG | Bearing |
| CS | Cap Screw |
| CU | Curb-Side |
| DR | Driver-Side |
| EA | Each |
| G | Grade |
| HX | Hex |
| HXW | Hex Washer |
| LK | Lock |
| NPTF | National Pipe Thread (Fluid) |
| PR | Prestolite |
| SL | Slotted |
| SO | Socket Head |
| SOL | Solenoid |
| SP | Spring |
| SQ | Square |
| STD | Standard |
| STS | Stainless Steel |
| TFTS | Thread Forming Tapping Screw |
| TRTS | Thread Rolling Tapping Screw |
| TY | Type |
| U | UniMount® System |
| W/ | With |
| W/O | Without |
| ZP | Zinc Plate |

INSTALLATION INSTRUCTIONS FOR BLADE GUIDE ASSEMBLY

Attach a Blade Guide to each outer rib using 5/16" x 1" cap screws and locknuts as shown in diagram.

62590 BLADE GUIDE ASSEMBLY

| ITEM | PART NO. | QTY. | DESCRIPTION |
|------|----------|------|---------------------------------|
| 1 | 62581 | 2 | BLADE GUIDE POLY 36" WITH DECAL |
| NS | 63290 | 1 | BOLT BAG ASSEMBLY |
| 2 | .68494 | 4 | 5/16-18X1 HEX CAP SCREW G5 |
| 3 | .91332 | 4 | 5-16-18 HEX LOCKNUT GB |



Copyright © 2009 Douglas Dynamics, L.L.C. All rights reserved. This material may not be reproduced or copied, in whole or in part, in any printed, mechanical, electronic, film or other distribution and storage media, without the written consent of Western Products. Authorization to photocopy items for internal or personal use by Western Products outlets or snowplow owner is granted.

Western Products reserves the right under its product improvement policy to change construction or design details and furnish equipment when so altered without reference to illustrations or specifications used. Western Products or the vehicle manufacturer may require or recommend optional equipment for snow removal. Do not exceed vehicle ratings with a snowplow. Western Products offers a limited warranty for all snowplows and accessories. See separately printed page for this important information. The following are registered (®) or unregistered (™) trademarks of Douglas Dynamics, L.L.C.: Hydra-Turn®, ISARMATIC®, PRO-GUARD™, Roll-Action™, ULTRAFINISH™, UniMount®, WESTERN®.

Printed in U.S.A.