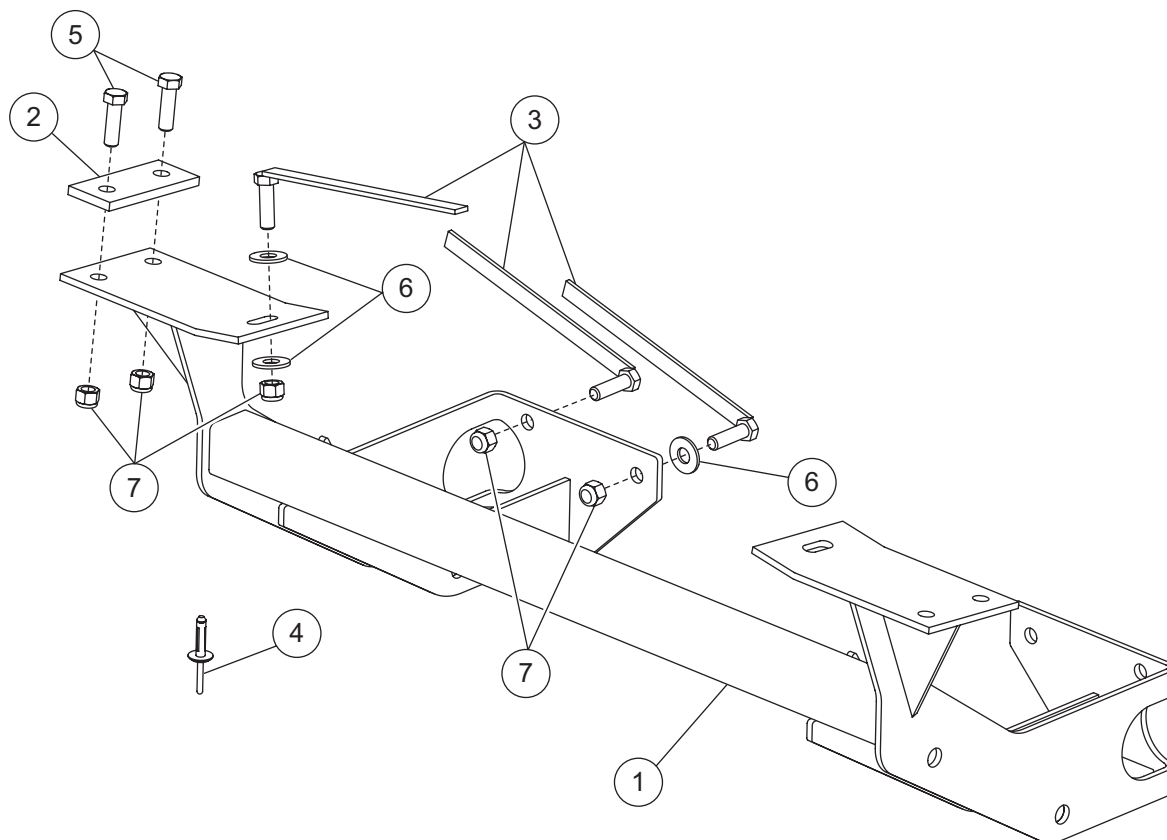


Personal Plow Mount Parts List and Diagram

November 1, 2003

Lit. No. 28048



3713 Truck Mount Parts List			
Item	Part	Qty	Description
1		1	Truck Mount - Jeep
ns	28049	1	Bolt Bag - 3713
28049 Bolt Bag - 3713			
2	28042	2	Clamping Plate
3	28043	6	3/8-16x1-1/4 Hex Cap Screw w/Handle G5
4	28071	3	Pop Rivet, Plastic, Package of Six
5	66456	4	3/8-16x1-1/4 Hex Cap Screw G5
6	90315	6	3/8 Flat Washer
7	91333	10	3/8-16 Hex Locknut GB
ns = not shown			G = grade

Copyright © 2003 Douglas Dynamics, L.L.C. All rights reserved. This material may not be reproduced or copied, in whole or in part, in any printed, mechanical, electronic, film or other distribution and storage media, without the written consent of the company. Authorization to photocopy items for internal or personal use by the company's outlets or snowplow owner is granted.

The company reserves the right under its product improvement policy to change construction or design details and furnish equipment when so altered without reference to illustrations or specifications used. Do not exceed vehicle ratings with a snowplow. The company offers a limited warranty for all snowplows. See separately printed page for this important information.

Printed in USA

