



UniMount

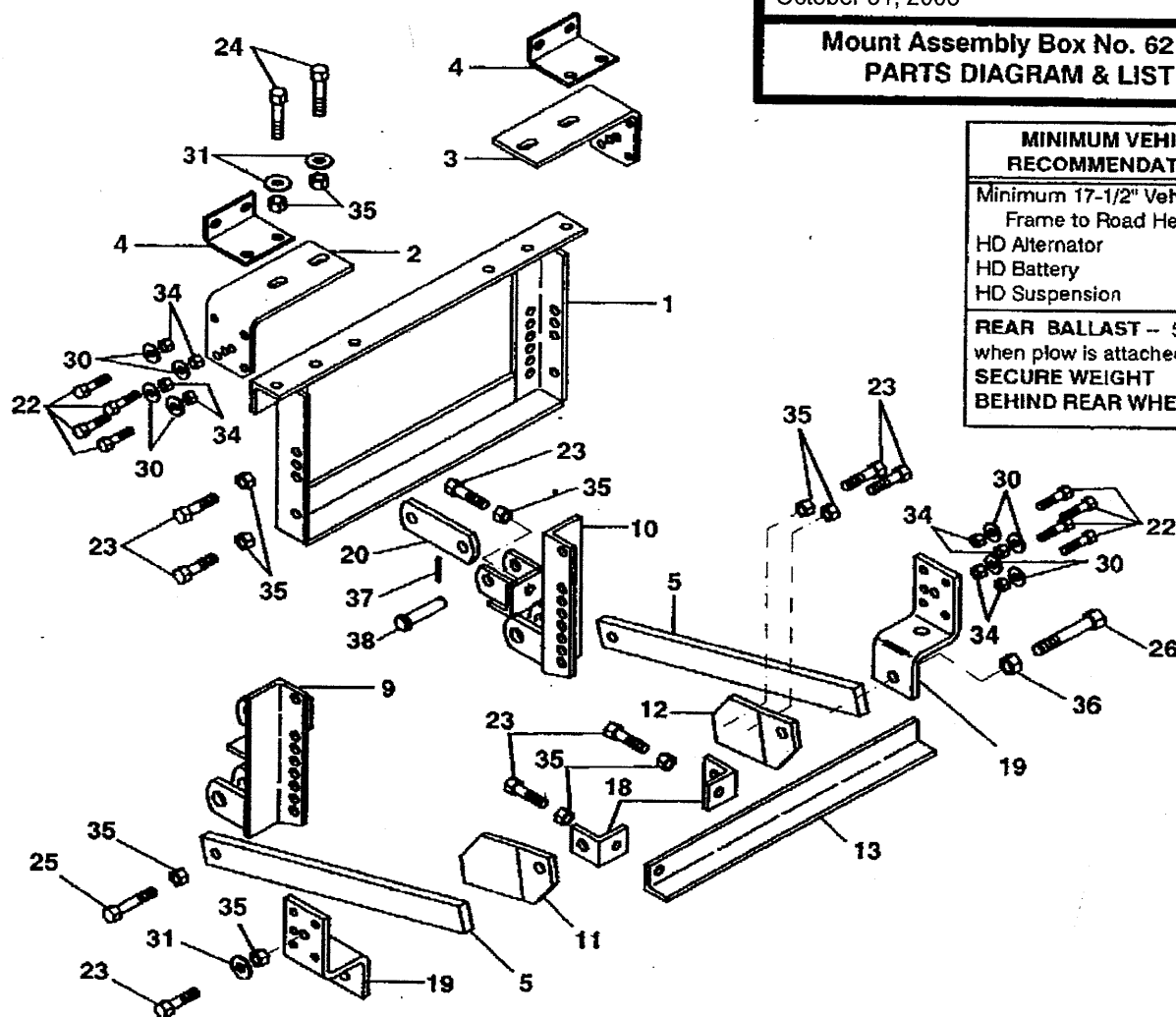
WESTERN PRODUCTS
P.O. BOX 245038
MILWAUKEE, WISCONSIN 53224-9538

dd A DIVISION OF DOUGLAS DYNAMICS, INC.

Vehicle Installation Instructions and
Parts List

Model 2915
Mount Assembly Box No. 62100
Universal Mount 3/4 & 1 Ton 1980 & Earlier
Hydraulics Box No. 56365
Harness Kit No. 61545 or 61565
October 31, 2003

**Mount Assembly Box No. 62100
PARTS DIAGRAM & LIST**



**MINIMUM VEHICLE
RECOMMENDATIONS**

Minimum 17-1/2" Vehicle
Frame to Road Height
HD Alternator
HD Battery
HD Suspension

REAR BALLAST -- 500 lbs.
when plow is attached
**SECURE WEIGHT
BEHIND REAR WHEELS.**

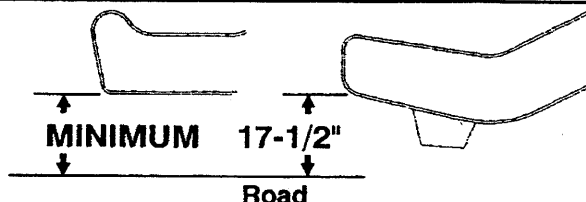
ITEM	PART NO.	QTY.	DESCRIPTION
1	62230	1	MOUNT FRAME 2915
2	62240	1	SIDE BAR DR
3	62241	1	SIDE BAR CU
4	62238	2	BUMPER TAB
5	62234	2	THRUST BAR
9	61390	1	SPREADER DR
10	61391	1	SPREADER CU
11	62235	1	THRUST LUG DR
12	62236	1	THRUST LUG CU
13	62242	1	CROSS BRACE
18	62239	2	ANGLE SHORT
19	62237	2	REAR BRACKET
20	61412	2	LINK ARM
22	90101	14	1/2-13X1-3/4 HX CS G5 ZP
23	90128	12	5/8-11X1-3/4 HX CS G5 ZP
24	90130	4	5/8-11X2-1/4 HX CS G5 ZP
25	90131	2	5/8-11X2-1/2 HX CS G5 ZP
26	90157	2	3/4-10X3 HX CS G5 ZP

ITEM	PART NO.	QTY.	DESCRIPTION
30	91105	14	1/2 PLAIN WASHER TY A STD ZP
31	91106	6	5/8 PLAIN WASHER TY A STD ZP
34	91335	14	1/2-13 PT HX LK NUT NYIS ZP
35	91337	18	5/8-11 PT HX LK NUT NYIS ZP
36	91338	2	3/4-10 PT HX LK NUT NYIS ZP
37	91911	2	5/32X1-1/2 COTTER PIN ZP
38	93062	2	RIVET 3/4" X 3-1/4" G5 ZP
NOT SHOWN			
	22381	1	BATTERY ADAPTERS, SIDE TERMINAL
	56080	1	DASH BRACKET
Above listed parts may be found in the following:			
	62243	1	BOLT BAG ASSY (62100)

Abbreviations

CS	Capscrew	NYIS	Nylon Insert
CU	Curb-Side	PT	Prevailing Torque
DR	Driver-Side	STD	Standard
G	Grade	TY	Type
HX	Hex	ZP	Zinc Plate
LK	Lock		

IMPORTANT: Vehicle must have a minimum of 17-1/2" from bottom of vehicle frame horn to road.



NOTE: Some cutting, drilling, and welding will be necessary to complete this installation.

IMPORTANT: Read instructions before assembling. Bolts should be finger tight until instructed to tighten per torque chart. Use standard methods and practices when attaching snowplow including wearing safety glasses during cutting, drilling, and welding.

SIDE BARS DR & CU:

1. Disconnect park/turn lights, if required, and remove bumper with brackets from the vehicle.
2. Place short legs of side bars on outside of vehicle frame horns (some vehicles may require mounting to inside) and long legs towards center of vehicle. Align to an existing vehicle frame hole. Fasten with one 1/2 x 1-3/4 bolt and locknut on each side (more bolts will be added later).

MOUNT FRAME AND SPREADERS:

1. Position mount frame between vehicle frame horns (cut off ends of top angle as required) and attach to long legs of side bars with two 5/8 x 2-1/4 bolts, flat washers to slots and locknuts on each side.

Rotate mount frame and side bars to a vehicle position. Tighten bolts.

2. Position a spreader (link arm lugs towards center of vehicle) on each mount frame angle. During installation, allow for drop in vehicle height when weight of plow is added. Final coupling lug hole center to level surface distance should be 9-1/2" to 10-1/2" with plow attached and resting on the level surface. (See Coupling Lug Height Check near end of these instructions.)

Top of spreader angles may require trimming to allow for highest spreader position.

3. On each side:

insert a 5/8" x 2-1/2" bolt through the spreader and lower hole of mount frame angle,
a 5/8" x 1-3/4" bolt through highest hole possible in spreader and mount frame angle,
a 5/8" x 1-3/4" bolt through hole between link arm lugs and front of mount frame angle.

Loosely retain each bolt with a locknut.

REAR BRACKET: (See diagrams, next page)

1. Choose a position free of frame brackets or obstructions where the rear brackets will fit tight to side and bottom of vehicle frame. The offset can be turned inside or outside for the convenience of making the installation.
If center hole aligns with a vehicle frame hole, use a 5/8" x 1-3/4" bolt, flat washer to frame, and locknut.
2. On all installations, drill four 1/2" holes using bracket holes as a template. Fasten with four 1/2" x 1-3/4" bolts, flat washers to vehicle frame, and locknuts in each side. **NOTE** Check inside of frame for gas lines, brake lines, etc. before drilling.

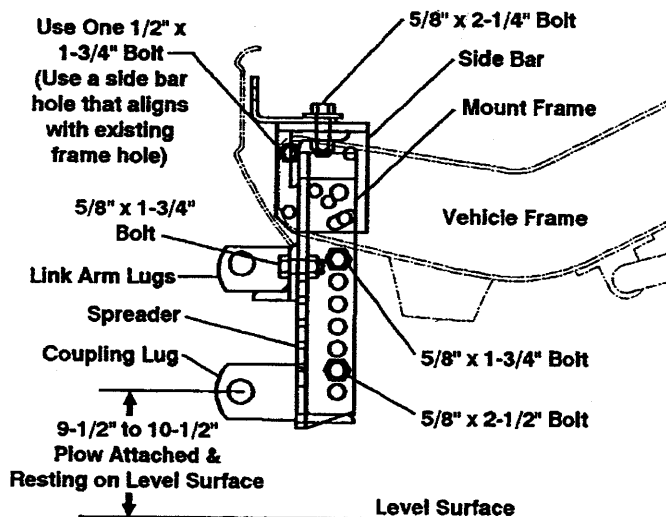
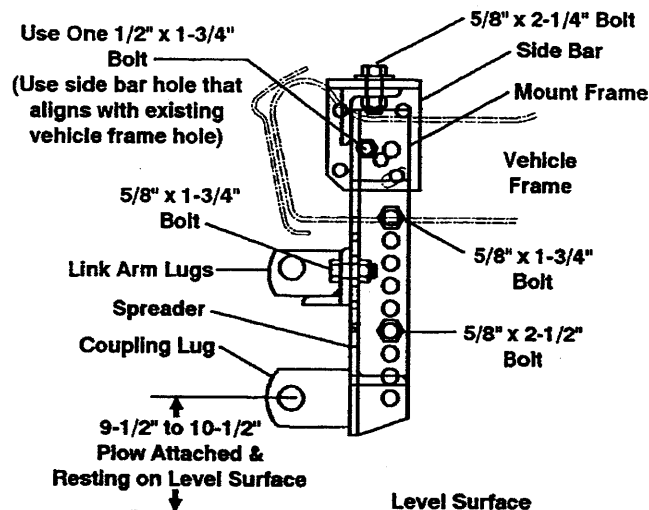
Mount Box No. 62100 INSTALLATION INSTRUCTIONS

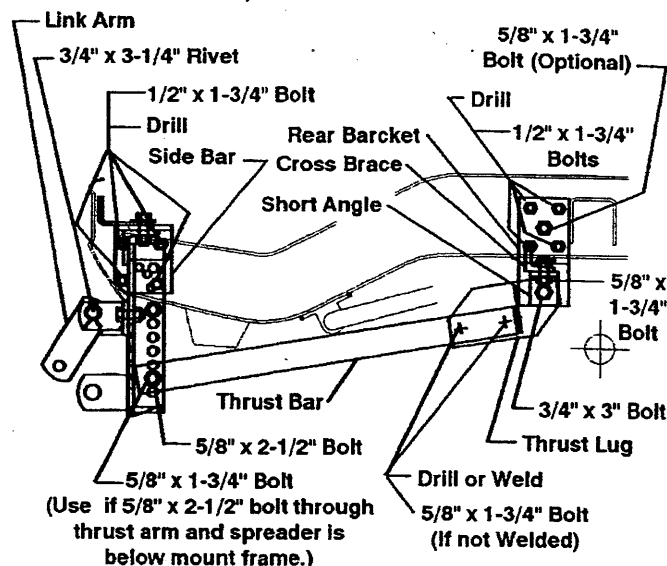
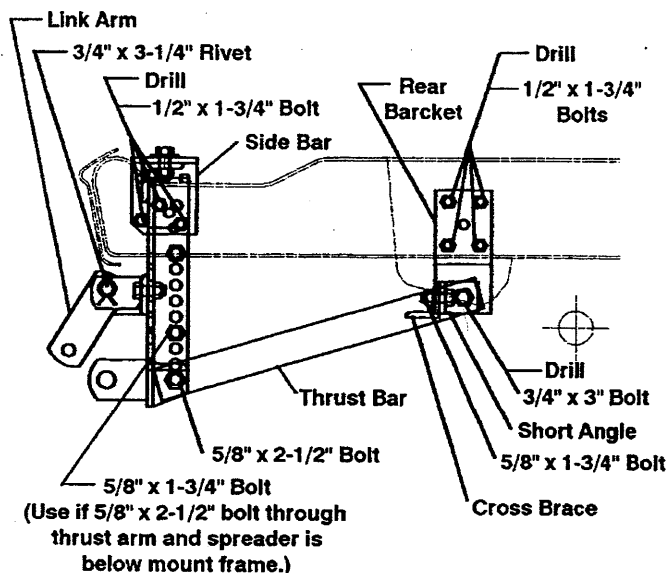
Recommended Fastener Torque Chart (Ft.-Lbs.)					
Size	SAE Grade 2	SAE Grade 5	SAE Grade 8	SAE Grade 8	SAE Grade 8
1/4-20	6	9	13		
5/16-18	11	18	28		
3/8-16	19	31	46		
3/8-24	24	46	68		
7/16-14	30	50	75		
1/2-13	45	75	115		
9/16-12	66	110	165		
5/8-11	93	150	225		
3/4-10	150	250	370		
7/8-9	202	378	591		
1-8	300	583	589		

Metric Grade 8.8 (Ft.-Lbs.)			
Size	Torque	Size	Torque
M 6	7	M 12	60
M 8	17	M 14	95
M 10	35	M 16	155

These torque values apply to mount assembly fasteners except those noted in the instruction.

AS VIEWED FROM DRIVER SIDE





THRUST BARS:

Vehicles without swaybars or other obstructions.

1. Align hole in each thrust bar to lowest hole possible in each spreader. Loosely attach with 5/8" x 2-1/2" bolt and locknut installed earlier.

If 5/8" x 2-1/2" bolt just installed through thrust arm and spreader is below mount frame, install a second 5/8" x 1-3/4" bolt with locknut into spreader and lowest hole in mount frame.

NOTE: Each spreader must be attached to mount frame with three (3) bolts.

2. Align end of thrust bar to 3/4" hole in rear bracket. Mark, and drill a clearance hole for a 3/4" bolt through each thrust bar. Trim length of thrust bar if required.
3. Insert a 3/4" x 3" bolt through each thrust bar into each rear bracket and install a short angle towards center of vehicle. Retain with locknut.

SECURE SIDE BARS TO VEHICLE FRAME.

To complete side bar to vehicle frame attachment, drill two or three additional 1/2" holes in frame on each side of vehicle using the side bar as a template. Fasten with same quantity 1/2" x 1-3/4" bolts, flat washers to vehicle frame, and locknuts.

CROSS BRACE:

1. Position hole in cross brace to hole in short angle on one side of vehicle, align cross brace to short angle on opposite side. Mark length and hole location. Drill clearance hole for 5/8" bolt and trim to marked length.

Attach cross brace to short angles with one 5/8" x 1-3/4" bolt and locknut on each side. Rotate crossbar and short angle assembly to clear components before tightening.

REPLACE VEHICLE BUMPER

Replace bumper using existing fasteners. If required, attach furnished bumper tabs to one of the mount frame to side bar bolts on each side.

TIGHTEN ALL BOLTS TO CORRESPONDING TORQUE CHART VALUES.

LINK ARM:

Fasten a link arm between each upper pair of spreader lugs with one 3/4" x 3-1/4" grade 5 rivet and cotter pin on each side.

Continued on next page.

Vehicles with swaybar or other obstructions.

1. Align hole in each thrust bar to lowest hole in each spreader. Loosely attach with 5/8" x 2-1/2" bolt and locknut installed earlier.

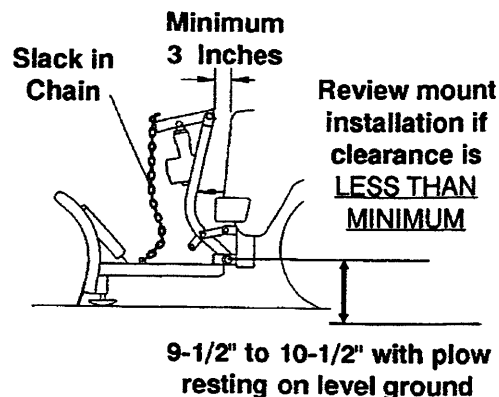
If 5/8" x 2-1/2" bolt just installed through thrust arm and spreader is below mount frame, install a second 5/8" x 1-3/4" bolt with locknut into spreader and lowest hole in mount frame.

NOTE: Each spreader must be attached to mount frame with three (3) bolts.

2. Insert a 3/4" x 3" bolt through each thrust lug into each rear bracket and install a short angle towards center of vehicle. Retain with a locknut.

NOTE: Bolt or weld thrust bar to thrust lug connections.

3. Align thrust bar to thrust lug. Mark and drill two 5/8" holes through both thrust bars and thrust lugs. Trim length of thrust bar if required. Attach with two 5/8" x 1-3/4" bolts and locknuts.
3. Align thrust bar to thrust lug and clamp in place. Trim length of thrust bar if required. Weld securely.



NOTE: During electrical installation, THE LONG BATTERY GROUND CABLE (no stripe) MUST BE GROUNDED TO THE NEGATIVE BATTERY TERMINAL.

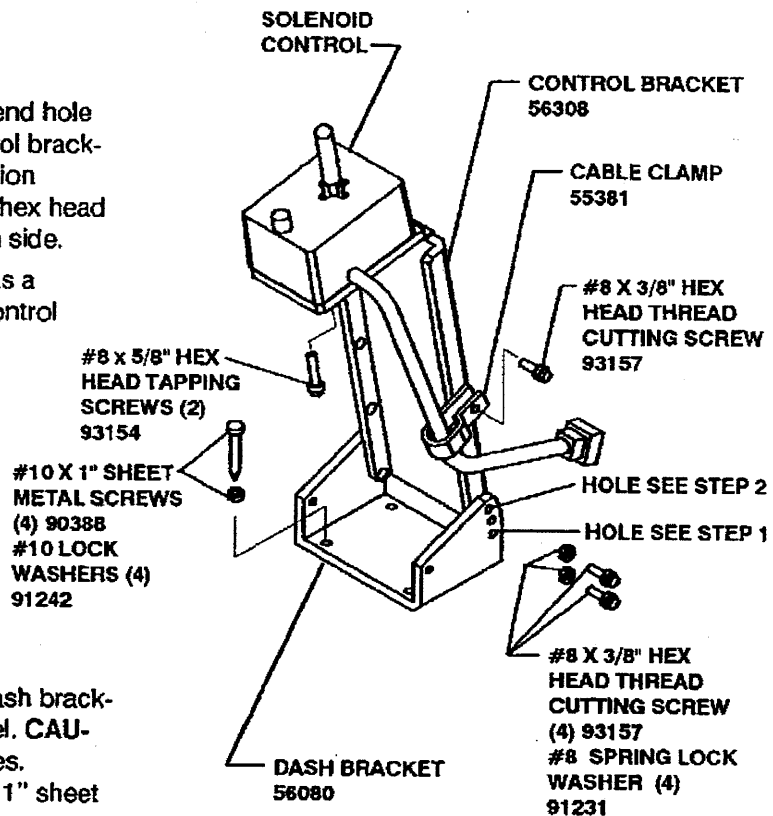
HARNESS KIT SELECTION:

For DUAL Type 2B Headlamps - Use Box NO. 61540 Headlamp Kit 9-Pin and 61545 Harness Kit 2B/2D 9-Pin U -A.
For QUAD Type 1A & 2A Headlamps - Use Box No. 61540 Headlamp Kit 9-Pin and 61565 Harness Kit 1A & 2A 9-Pin U -A.

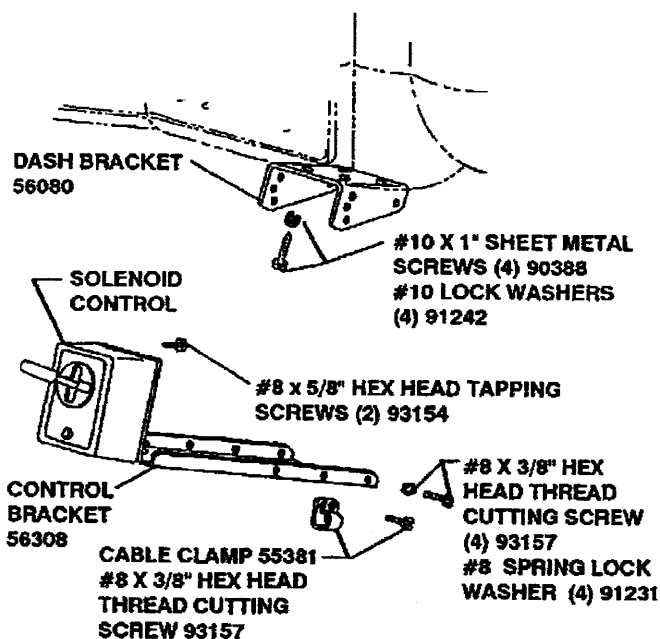
NOTE: After 5 to 10 hours of snowplow usage, retorque all mount assembly fasteners.

Solenoid Control – Floor Mounted INSTALLATION INSTRUCTIONS

1. Align dash bracket hole shown in diagram to end hole of control bracket. **NOTE:** Top flange of control bracket may be reversed in dash bracket from position shown in diagram. Attach with one #8 x 3/8" hex head thread cutting screw and lock washer on each side.
2. Use top holes in dash bracket (see diagram) as a template to drill a 9/64" hole in each side of control bracket. Secure dash bracket to control bracket with a second screw and lock washer in each side.
3. Secure solenoid control to control bracket with two #8 x 5/8" hex head tapping screws.
4. Move seat forward. Locate control and bracket assembly on floor tunnel so that it does not interfere with the operation of vehicle controls. Mark this location.
5. Remove control bracket from dash bracket.
6. Place dash bracket in marked location. Use dash bracket as a template to drill four 1/8" holes in tunnel. **CAUTION:** Check for clearance before drilling holes. Secure dash bracket to tunnel with four #10 x 1" sheet metal screws and lock washers.
7. Reassemble control bracket to dash bracket. Bend top flange of control bracket to desired position.
8. Secure harness to control bracket with cable clamp and one #8 x 3/8" hex head thread cutting screw.



Solenoid Control – Dash Mounted INSTALLATION INSTRUCTIONS



1. Secure solenoid control to control bracket using two #8 x 5/8" hex head tapping screws, and control bracket to dash bracket using four #8 x 3/8" hex head thread cutting screws. Secure control cable to control bracket with cable clamp using one #8 x 3/8" hex head thread cutting screw.
2. Select a location on the dash for the assembly. The dash bracket should fit fairly flat against the surface of the dash. Verify that control will clear vehicle components in all positions. Check for clearance before drilling holes.
3. Mark this location.
4. Remove the dash bracket. Place dash bracket in selected location and mark four holes.
5. Drill four 1/8" holes in marked locations. Secure dash bracket using four #10 x 1" sheet metal screws and lock washers.
6. Place control into dash bracket and fasten in desired position reusing fasteners from paragraph 1 above. **NOTE:** Bend top flange of control bracket to desired position.



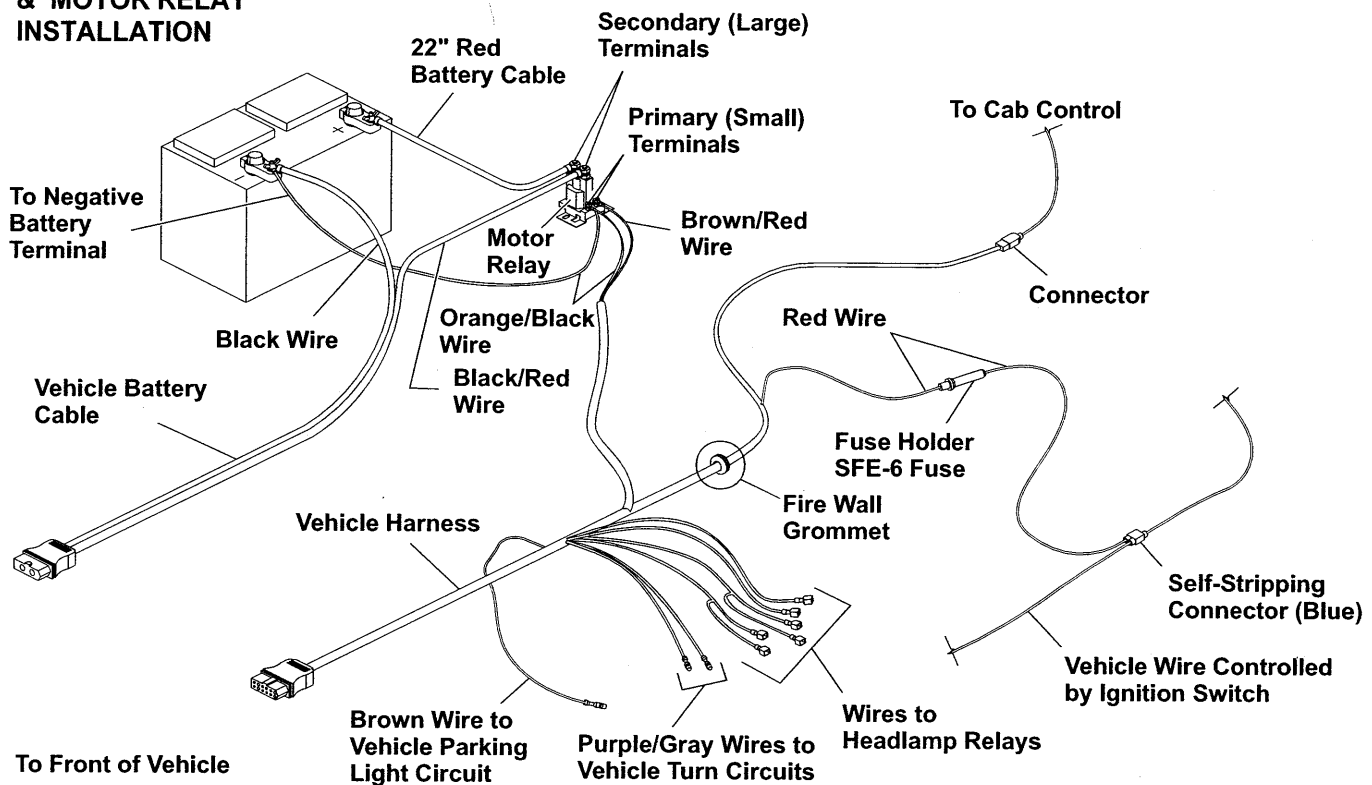
SAFETY NOTE: Whenever you see this symbol, it notes a **SAFETY WARNING**. To avoid serious injury to yourself or others, follow all warnings.

Vehicle Underhood INSTALLATION INSTRUCTIONS

9-Pin Vehicle Harness And Motor Relay

Except as noted, parts to be installed are found in the hydraulics box.

HARNESS, SOLENOID CONTROL & MOTOR RELAY INSTALLATION



NOTE: To prevent corrosion on all underhood electrical connections, use dielectric grease to fill receptacles and lightly coat ring terminals and blades before assembly or lightly coat connections after assembly.

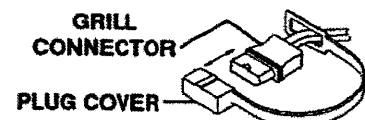
1. Identify wires for the parking lamp on the driver-side and the turn signals on both sides. Attach a black self-striping bullet receptacle connector (found in harness kit) to each of these three wires.
2. Remove negative battery cable from battery.



WARNING: Electrical shock hazard. Disconnect battery before beginning electrical installation.

3. Find a location for the motor relay where it will be protected from road splash and will be within 18" of the vehicle primary battery. **NOTE:** Motor relay terminals must be up or horizontal. Using the motor relay mounting plate as a template, drill two 9/32" holes, and mount motor relay to holes using 1/4" x 3/4" bolts, flat washers, and locknuts.
4. Route 22" red battery cable between a large motor relay terminal and the POSITIVE (+) battery terminal, taking care to avoid sharp edges and hot or moving parts. Attach cable to motor relay terminal with a lock washer and 5/16"-24 jam nut. Attach cable to the battery POSITIVE (+) terminal with the furnished battery adapter. (Adapters found in mount box.) Tighten battery adapter to 124-178 in-lb. Attach OEM battery cable to adapter with original bolt. Hold adapter while tightening original bolt to 124-178 in-lb.
5. Stretch rectangular openings of plug cover straps (found in harness kit) over grill connector ends of long battery cable assembly (found in hydraulics box) and 9 pin vehicle harness (found in harness kit). Place plug covers over molds on harnesses.

Continued on next page.

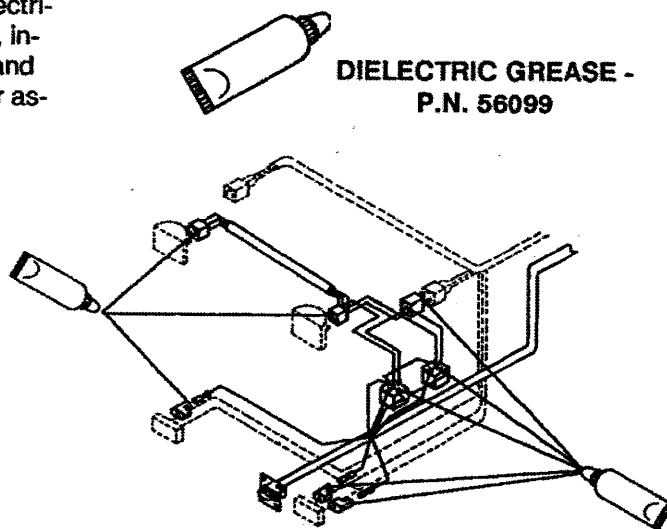
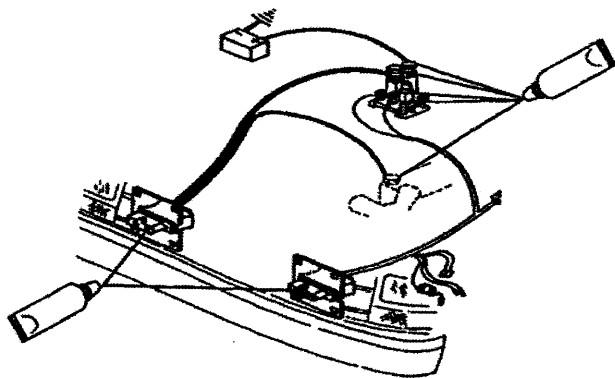


6. Find a location in the vehicle grill on the battery side for mounting the battery cable grill connector. The best location is at least 10-1/2" from the center of the grill and at a convenient height for connecting the plow plugs. Allow grill connector of each harness to hang out in front of grill. Allow enough cable so it is easy to mate and remove connectors.
7. Route battery cable through the grill at the selected location and through or around the radiator bulkhead to motor relay taking care to avoid sharp edges and hot or moving parts.
8. Attach cable with red stripe to the unused large terminal on the motor relay, and secure it with a lock washer and 5/16"-24 jam nut.
9. Route cable without stripe directly to the negative battery terminal (separate the two cables as needed to reach the battery). DO NOT attach cable to battery at this time.
10. Find a location in grill on driver-side for mounting 9 pin vehicle harness (similar position to battery cable mount). See Step #6 & 7 above for how to mount. Route 9 pin vehicle harness through grill and around or through radiator bulkhead (drill 5/8" hole if needed) into engine compartment.
11. Route the wires that break out of the 9 pin vehicle harness to the area behind the driver-side headlamp. Route rest of harness to the firewall. Drill a 5/8" hole through the firewall in any convenient location away from hot or moving engine parts. Feed fuse holder through hole first and then feed the plastic connector and harness through to the cab.
12. Route brown/red and black/orange wire loom to motor relay. Attach each ring terminal to a separate small terminal on motor relay using a lock washer and #10-32 nut for each terminal.
13. Attach the hydraulic unit black battery cable and orange/black wire terminal to the negative terminal with the furnished battery cable adapter. (Adapters found in mount box.) Tighten battery adapter to 124-178 in-lb. Attach OEM battery cable to adapter with original bolt. Hold adapter while tightening original bolt to 124-178 in-lb.
14. Inside the cab, route 9 pin vehicle harness connector to solenoid control and couple the connectors together.
15. Locate an accessory wire or unused fuse box terminal capable of carrying 7 amps and controlled by the ignition (key) switch. Route the vehicle harness SFE-6 fuse holder red wire to this location and trim off any excess length of wire (keep fuse holder in system).

Fuse block terminal as source: Attach a terminal (not furnished) to the vehicle harness red wire and plug on to fuse box terminal. If DRL wire is used, crimp pink wire into the same terminal with the red wire.

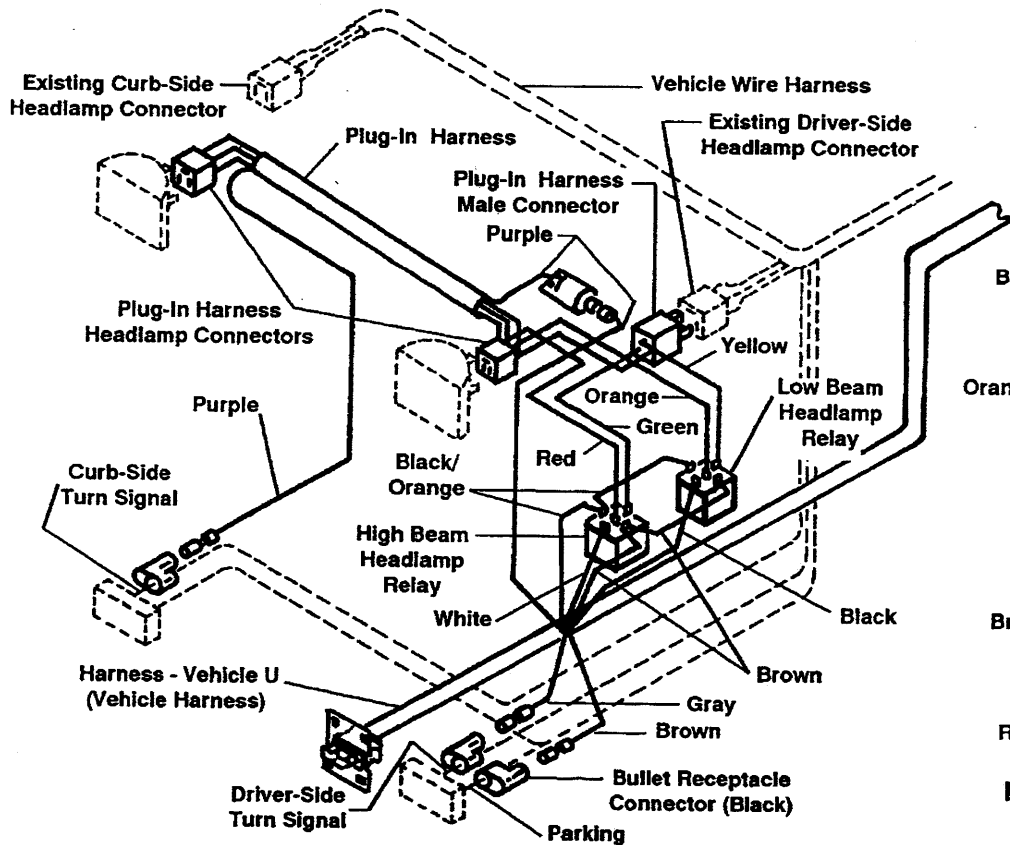
Accessory wire as source: Open blue self-stripping connector and place the end of the red wire against the inner groove stop (end of wire must not extend from the connector) and the accessory wire in the outer groove. Close connector over the wires using a pair of pliers and snap the locking tab in place. Repeat with DRL pink wire.

REMINDER: To prevent corrosion on all underhood electrical connections, use dielectric grease to fill receptacles, including grill connectors, and lightly coat ring terminals and blades before assembly or lightly coat connections after assembly.

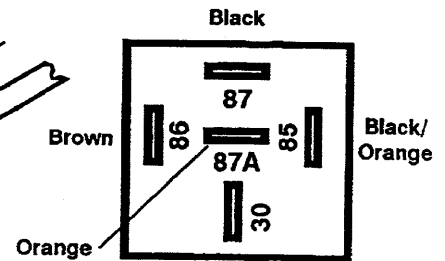


PLUG-IN HARNESS & HEADLAMP RELAY INSTALLATION

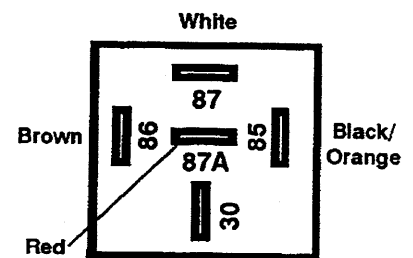
VEHICLE HEADLAMP WIRING DIAGRAM



HEADLAMP RELAY WIRING DIAGRAM Type - A



Low Beam Headlamp Relay



High Beam Headlamp Relay

Plug-in Harness & Headlamp Relay

Reminder: Lubricate all receptacles and blades with dielectric grease before assembly.

1. In the engine compartment behind the driver-side headlamp, insert wire bullets from 9 pin vehicle harness into black bullet connectors (installed in step #1 of previous section) as follows:
Brown wire to parking lamp wire on driver-side.
Gray wire to turn signal wire on driver-side.
2. At the vehicle driver-side headlamp(s), remove the connector(s) from the headlamp(s) and couple connector with plug-in harness 3-wire male plug (plug-in harness found in harness kit). Attach plug-in harness headlamp connector(s) to mating headlamp terminals.
3. Route other end of plug-in harness along radiator bulkhead or over radiator shroud to curb-side headlamp(s). Remove headlamp connector(s) and secure connector(s) with a cable tie (found in harness kit). Attach plug-in harness headlamp connector(s) to mating headlamp terminals.
4. On the curb-side, insert purple wire bullet from plug-in harness into vehicle turn signal black bullet connector installed in step # 1 of the previous section.
5. At the driver-side headlamp(s), insert the purple wire bullet from the vehicle harness into the purple wire receptacle on the plug-in harness.
6. At driver-side headlamp(s), connect 9 pin vehicle and plug-in harness wires with receptacles to the two headlamp relays (found in harness kit) as shown in the above diagram. Use cable ties (found in harness kit) to secure relays and prevent accidental grounding of connections.
7. Place grommet around 9 pin vehicle harness and insert into firewall hole (also insert a grommet in the hole in the radiator bulkhead if one was drilled). Use cable ties to secure harnesses and wires away from hot or moving engine parts.
8. Replace vehicle flasher with flasher furnished in harness kit.
9. Lubricate terminal cavities of both grill connectors with dielectric grease. Furnish dielectric grease tube to vehicle owner for future lubrication of grill connectors.

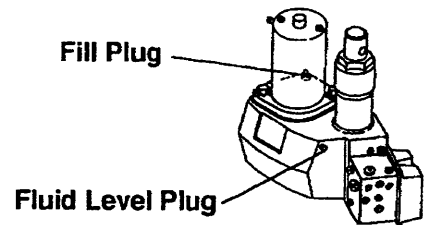
Continued on next page.

OPERATIONAL TESTS AND ADJUSTMENTS

Mount plow assembly to vehicle. (See label on back of blade or owner's manual for mounting instructions.)

Filling Hydraulic Unit

1. Push lift channel all the way down.
2. Remove fill plug and fluid level plug.
3. Fill unit with automatic transmission fluid (ATF) through fill plug hole until fluid runs out of fluid level hole. Replace both plugs. **NOTE:** For low temperature operation you can use Mobil One or Texaco 1537 Aircraft Hydraulic Oil.



Alternate method: (Systems without fluid level plug.) Remove plow from vehicle. With stand lock pin in place, fill unit through fill plug opening. Unit is full when fluid reaches fill hole threads. Replace fill plug.

4. Turn ignition (key) switch to ON or ACCESSORY position.
5. Turn the control ON/OFF switch ON.
6. Move control lever to angle left and angle right several times to remove air from Hydra-Turn® rams. **DO NOT raise blade as this may cause pump cavitation.**
7. Refill unit with fluid following procedure in paragraph 3 of this section.
8. Move the control lever as indicated on label to control the plow. Raise and lower plow several times to remove air. Recheck fluid level per paragraph 3 of this section.

Capacity: Solenoid ISARMATIC® Mark IIIa reservoir 1-3/4 quarts
Equipped with 10" Hydra-Turn® rams 2-3/8 quarts



WARNING: To prevent accidental movement of plow, always turn the solenoid control to OFF when the mounted plow is not in use.

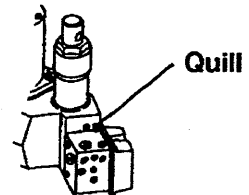
Blade Drop Speed Adjustment

The quill on the top rear of the valve manifold (see diagram) adjusts blade drop speed.

Turn quill IN (clockwise) to slow drop speed.

Turn quill OUT (counterclockwise) to increase drop speed.

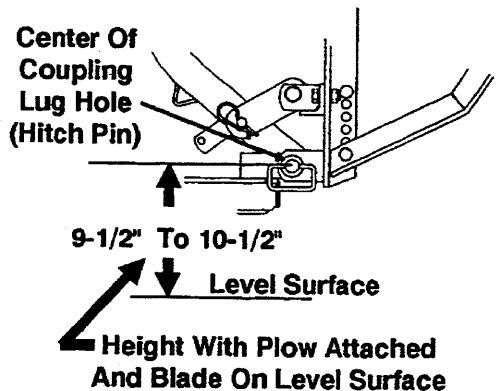
NOTE: Turning quill too far IN can slow raise time.



COUPLING LUG HEIGHT CHECK

Coupling Lug Height Check:

1. Mount plow to vehicle (see label on back of blade or owner's manual for mounting instructions).
2. Lift plow and move vehicle. Travel a minimum of 10 feet. Lower blade.
3. After step 2, with: blade on level surface, slack in lift chain, rear ballast located behind rear wheels, center of coupling lug holes (hitch pin shaft) to level surface should measure 9-1/2" to 10-1/2". To obtain height, adjust spreader position.



NOTE: Coupling height must be 9-1/2" minimum to allow stand to be pinned to lift frame.

4. Adjust chain slack with plow mounted to vehicle and lift channel pushed all the way down. To adjust, remove chain from hook. Straighten chain and pull tight. Rehook it to lift channel. After it is hooked, it will have the correct amount of slack for blade "float". **DO NOT** remove chain from lift channel when removing plow from vehicle.

Final Hydraulic Inspection

1. Make sure all fasteners and hydraulic and electrical connections are tight.
2. Check ram packing nuts for oil leakage. If any leakage is observed, tighten the packing nut 1/4 turn after you feel the nut contact the packing. Do not overtighten — overtightening affects cylinder operation and shortens the life of the packing. A short period of normal operation will allow chevron packings to become saturated, and leakage will normally stop.

VEHICLE LIGHTING CHECK**Vehicle Lighting Check**

1. Check the operation of vehicle and plow lights.

Turn signals and parking lamps:

Parking lamps ON	Both vehicle and plow lamps should be on at the same time.
Right Turn Signal ON	Both vehicle and plow lamps should flash at the same time.
Left Turn Signal ON	Both vehicle and plow lamps should flash at the same time.

Headlamps:

Move vehicle headlamp switch to the ON position. Connecting and disconnecting the 9 or 12 pin plow plug from the grill connector should switch between vehicle and plow headlamps as follows:

9 or 12 pin plow plug DISCONNECTED	Vehicle headlamps should be on
9 or 12 pin plow plug CONNECTED	Plow headlamps should be on

Dimmer switch should dim whichever headlamps are operating. Likewise, the high beam indicator on the dash should light when either set of headlamps is on high beam.

Solenoid Control

The control indicator light should light whenever the control ON/OFF switch and the ignition (key) switches are both turned ON and the plow plugs are connected to the grill connectors.

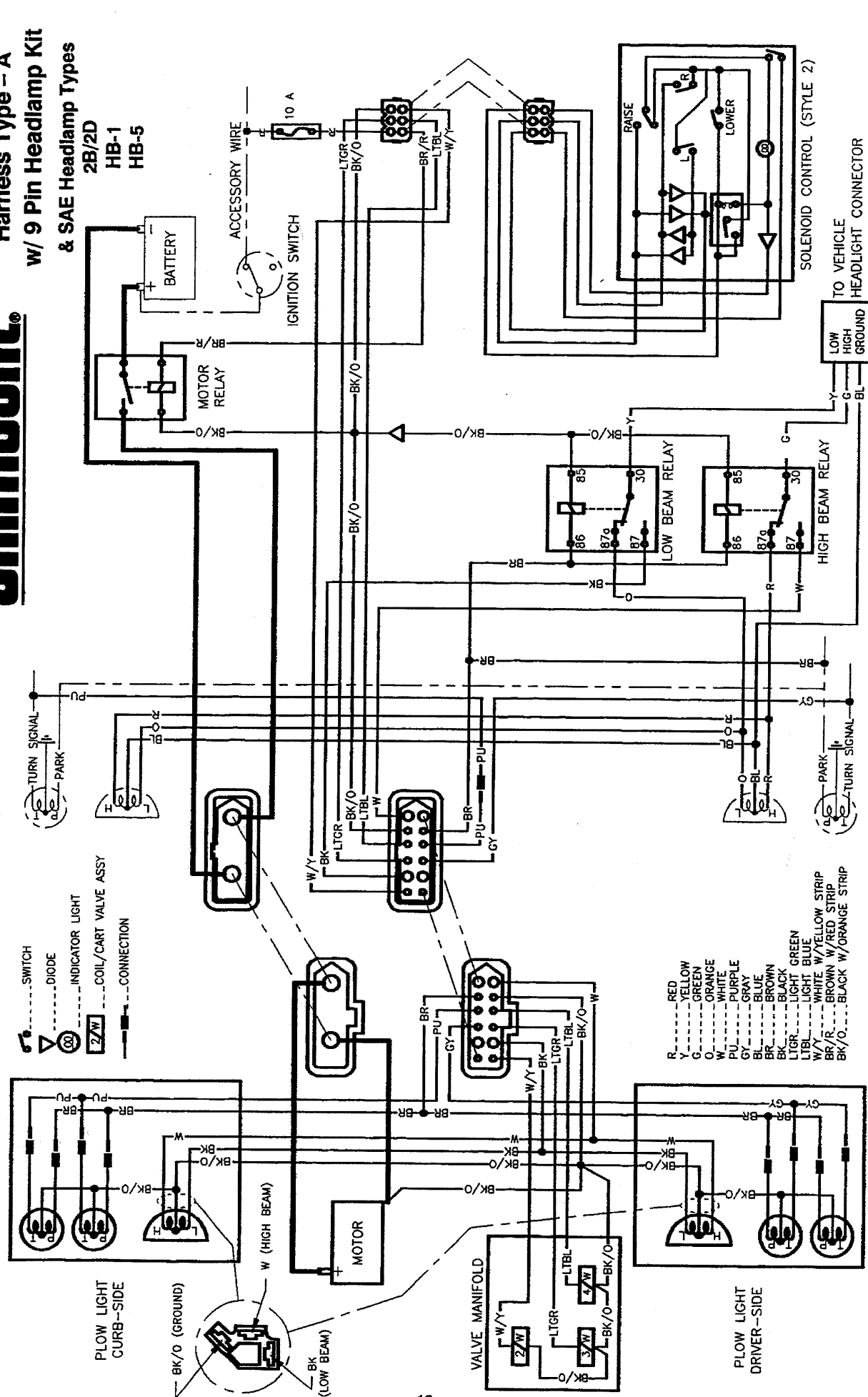
The indicator light will also light when the control and ignition (key) switches are on and the plow plugs are disconnected. If the parking lights are turned on (with plow plugs disconnected), the indicator light will go out.

2. Connect plow plug to grill connector. Raise plow and aim plow headlamps according to SAE J599 Lighting Inspection Code (See Service Bulletin SP 608) and any applicable federal, state, or local regulations.
3. Check aim of vehicle headlamps with plow removed.
4. When plow is removed from the vehicle, install plug covers on grill connectors and insert the plow plugs into the boot on the hydraulic unit.

NOTE: After 5 to 10 hours of snowplow usage, retorque all mount assembly fasteners.

Unimount[®]

Wiring Diagram Harness Type - A w/ 9 Pin Headlamp Kit & SAE Headlamp Types 2B/2D HB-1 HB-5



Solenoid Control - The control indicator light should light whenever the control ON/OFF switch and the ignition (key) switch are both turned ON and the plow plugs are connected to the grill connector.

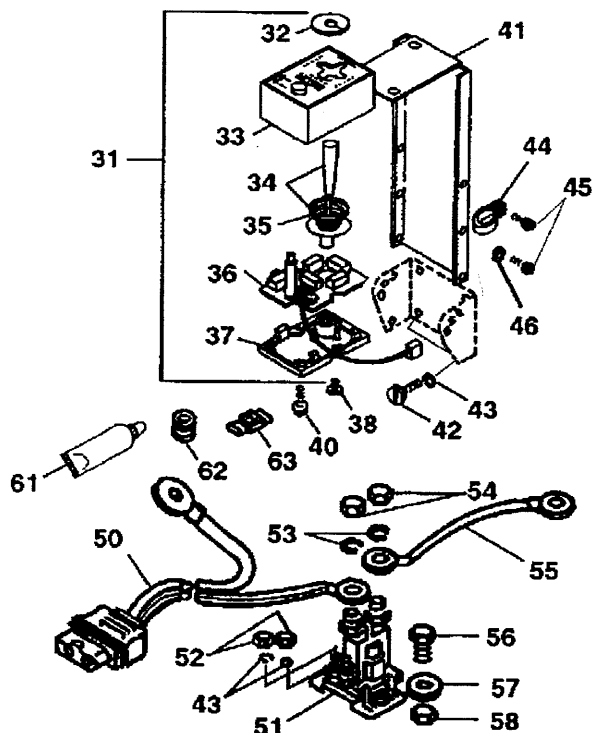
The indicator light will also be on when the control and ignition (key) switches are ON and the plow plugs are disconnected. If the parking lights are turned on (with plow plugs disconnected), the indicator light will go out.

**Wiring Diagram
Harness Type – A
w/ 9 Pin Headlamp Kit
& Quad Rectangular Headlamps
SAE Type 1A & 2A**

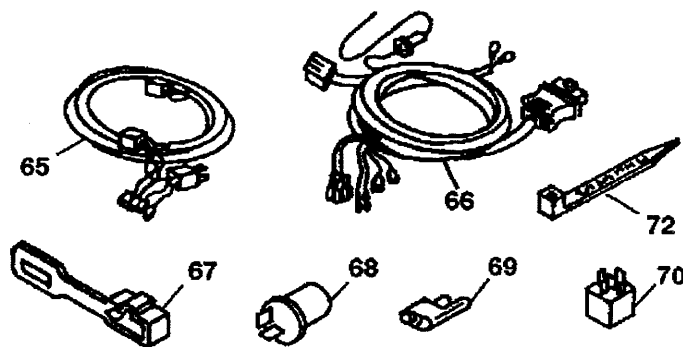


Solenoid Control -- The control indicator light should light whenever the control ON/OFF switch and the ignition (key) switch are both turned ON and the plow plugs are connected to the grill connector.

Mount Assembly Box No. 62100
 Harness Kit Box No. 61545 or 61565
 Hydraulics Box No. 56365
PARTS DIAGRAM & LIST



ITEM	PART NO.	QTY.	DESCRIPTION
Found in Hydraulics Box No. 56365			
31	56369	1	SOLENOID CONTROL (Style 2)
32	56283	1	SHIELD
33	49286	1	BODY W/LABEL & LENS (Style 2)
34	49287	1	LEVER, SPRING & ACTUATOR KIT (Style 2)
35	55923	1	SPRING - CONICAL
36	49283	1	PC BOARD ASSY MOLEX (Style 2)
37	56199	1	BASE
38	93153	2	#6-19X3/8 SL HXW Tfts HILO
40	93154	2	#8-18X5/8 SL HXW Tfts HILO
41	56308	1	CONTROL BRACKET
42	90388	4	#10X1 SL PN Tfts TY AB BZP
43	91242	4	#10 SP LK WASHER BPO
44	55381	1	CABLE CLAMP
45	93157	5	#8-32X3/8 SL HXW TCTS TY T BP
46	91231	4	#8 SP LK WASHER BP
50	61169	1	CABLE ASSEMBLY - VEHICLE
51	56134K	1	RELAY-SOLENOID HYDRAULIC SYS
43	91242	2	#10 SP LK WASHER BPO
52	91402	2	#10-32 HX NUT ZP
53	91202	2	5/16 SP LK WASHER ZP
54	92842	2	5/16-24 HX JAM NUT
55	22511	1	BATTERY CABLE 22" RED
56	90002	2	1/4-20X3/4 HX CS G2 ZP
57	91101	2	1/4 PLAIN WASHER TY A STD ZP
58	91331	2	1/4-20 PT HX LK NUT NYIS ZP
61	56099	1	DIELECTRIC GREASE TUBE
62	66130	2	RUBBER GROMMET
63	59114	1	SELF STRIP WIRE CONNECTOR
Parts listed above may be found in one of these assemblies.			
56368	1		CARTON ASSY LOOSE PARTS U
56367	1		BOLT BAG ASSY LARGE U
56358	1		BOLT BAG SMALL U



ITEM	PART NO.	QTY.	DESCRIPTION
Found in Harness Kit Box No. 61545 or 61565			
65	61546	1	PLUG-IN HARNESS 2B/2D U -A (For Harness Kit No. 61545)
	61565	1	PLUG-IN HARNESS 1A & 2A U -A (For Harness Kit 61565)
66	61437	1	VEHICLE HARNESS 9-PIN U
67	61548	2	PLUG COVER U
68	60109	1	FLASHER HD
69	59224	3	BULLET RECEPTACLE CONNECTOR
70	61535	2	HEADLAMP RELAY SPDT
72	59223	8	CABLE TIE
Parts listed above may be found in the following assembly.			
	61547	1	PARTS BAG



Found in Mount Box No. 62100			
90	56080	1	DASH BRACKET

		Abbreviations	
ASSY	Assembly	SL	Slotted
BP	Black Phosphate	SP	Spring
BPO	Black Phosphate & Oil	SPDT	Single Pole Double Throw
BZP	Black Zinc Plate	STD	Standard
CS	Capecrew	SVS	System
G	Grade	TCTS	Thread Cutting Tapping
HD	Heavy Duty		Screw
HX	Hex	Tfts	Thread Forming Tapping
HXW	Hex Washer		Screw
LK	Lock	TY	Type
NYIS	Nylon Insert	U	UniMount® System
PC	Printed Circuit	W/	With
PN	Pin	ZP	Zinc Plate
PT	Prevailing Torque		

Indented part numbers are included in the assembly under which they are listed. Quantities shown are included with the assembly.

The following are registered® and unregistered™ Trade Marks of Douglas Dynamics, Inc.
 WESTERN® ISARMATIC® Hydra-Turn® Roll-Action™ PRO-GUARD™ UniMount™

Western reserves the right under its Product Improvement Policy to change construction details and furnish equipment when so altered without reference to illustrations or specifications used here.