



Western Products
PO Box 245038
Milwaukee, WI 53224-9538
www.westernplows.com

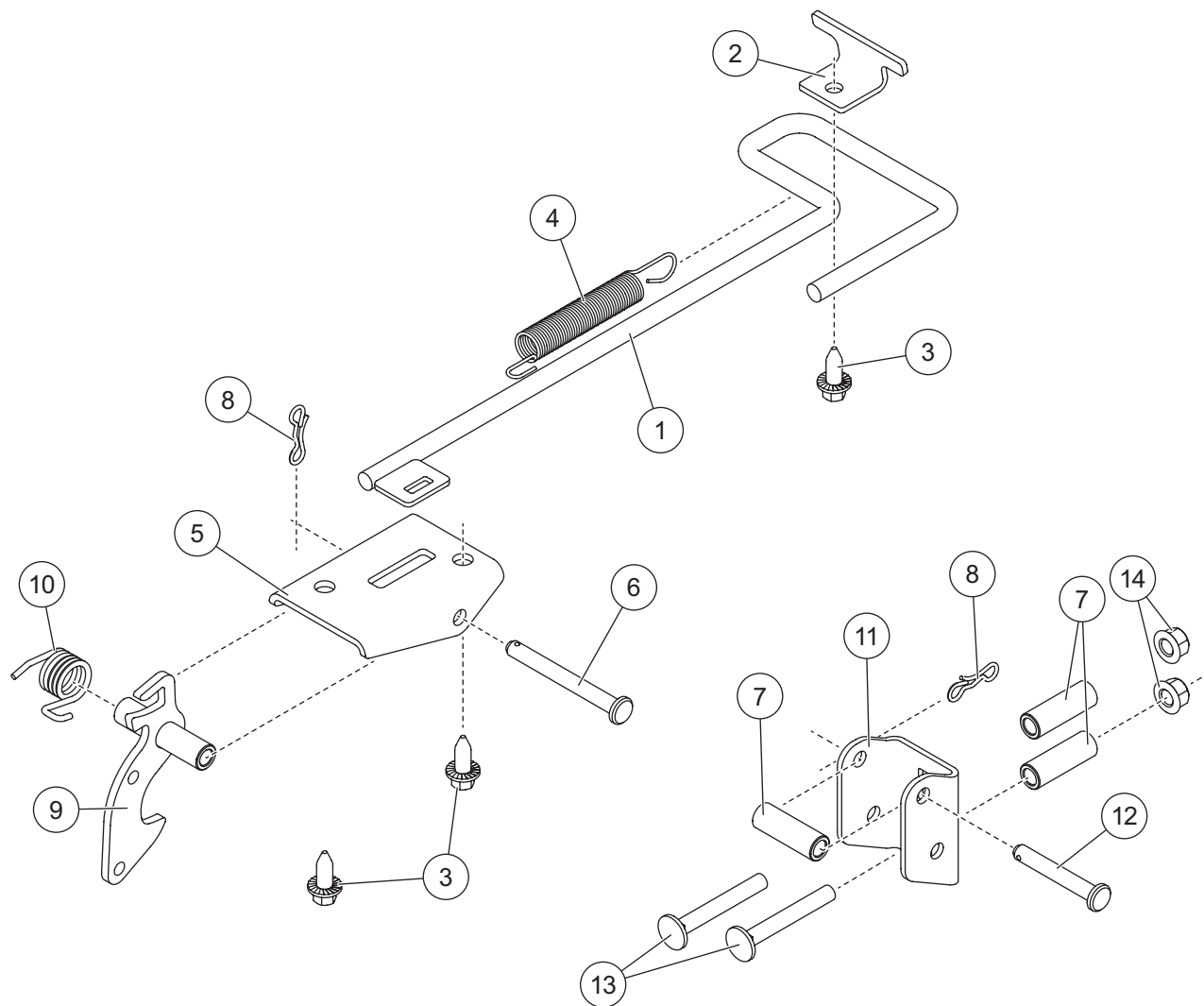


A DIVISION OF DOUGLAS DYNAMICS, LLC

30765 – BED LATCH KIT

Parts List & Installation Instructions

PARTS LIST



| 30765 Bed Latch Kit | | | | | | | |
|---------------------|------|-----|--------------------------|------|------|-----|-----------------------|
| Item | Part | Qty | Description | Item | Part | Qty | Description |
| 1 | | 1 | Cargo Box Release Handle | 8 | | 2 | Bowtie Clip |
| 2 | | 1 | Handle Retainer Plate | 9 | | 1 | Latch Hook |
| 3 | | 3 | M8 x 20 Tapping Screw | 10 | | 1 | Torsion Spring |
| 4 | | 1 | Extension Spring | 11 | | 1 | Hook Pin Bracket |
| 5 | | 1 | Latch Bracket | 12 | | 1 | Hook Pin |
| 6 | | 1 | Latch Pivot Pin | 13 | | 2 | M8 x 60 Carriage Bolt |
| 7 | | 3 | Bushing | 14 | | 2 | M8 Hex Locknut |
| M = Metric | | | | | | | |

30765 UTV BED LATCH KIT

INSTALLATION INSTRUCTIONS

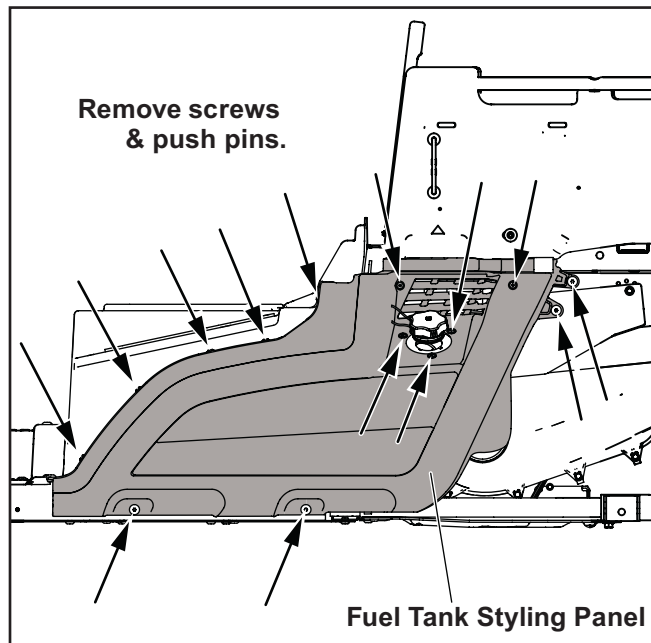
⚠ WARNING

The driver shall keep bystanders clear of the cargo box when it is being raised or lowered. Do not stand between vehicle and the cargo box or within 8 feet of a moving cargo box. A moving or falling cargo box could cause personal injury.

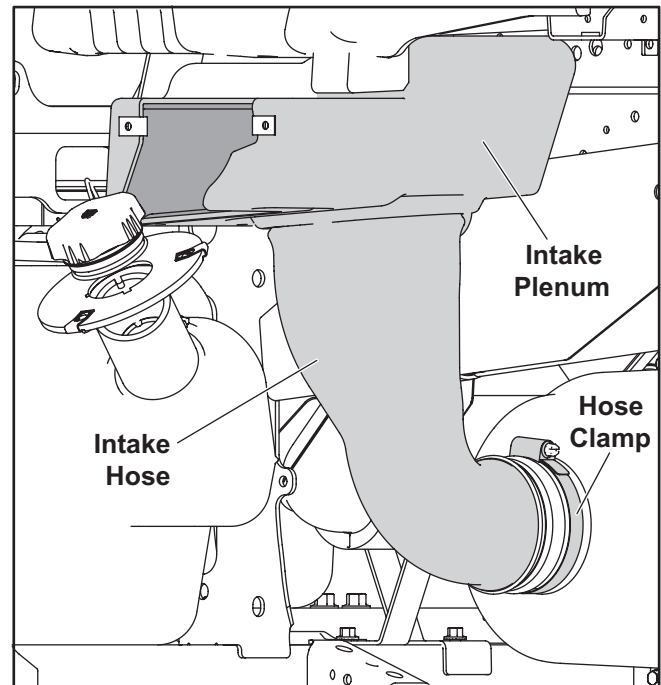
⚠ CAUTION

Use standard methods and practices when attaching spreader and installing accessories, including proper personal protective safety equipment.

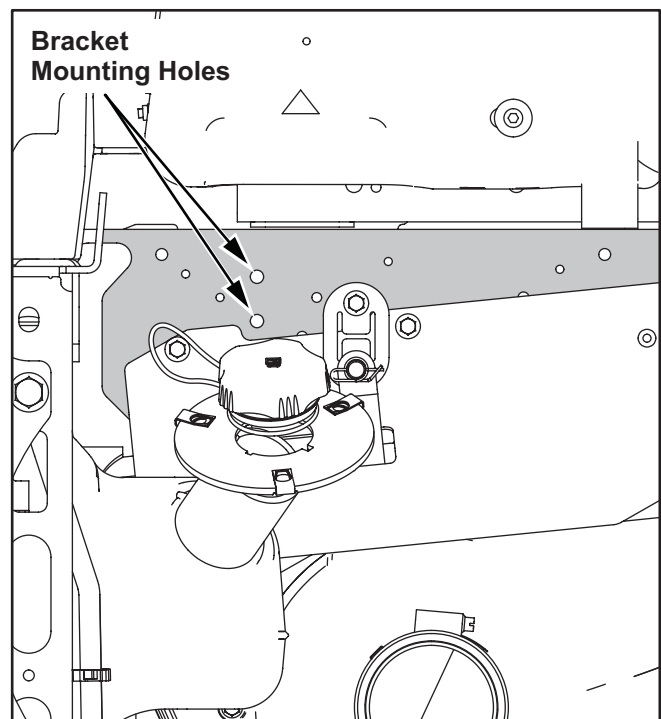
1. Park the vehicle on a smooth, level, hard surface, such as concrete.
2. Remove the screws and push pins and remove the fuel tank styling panel.



3. Loosen the hose clamp and remove the intake plenum and hose.

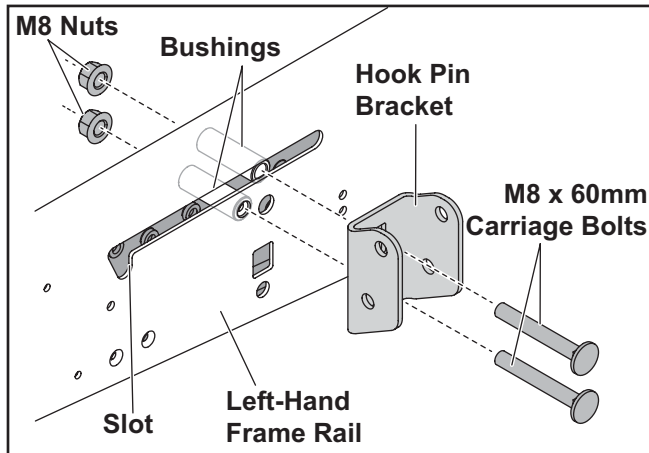


4. Locate the pair of bracket mounting holes on the outside of the left-hand frame rail.



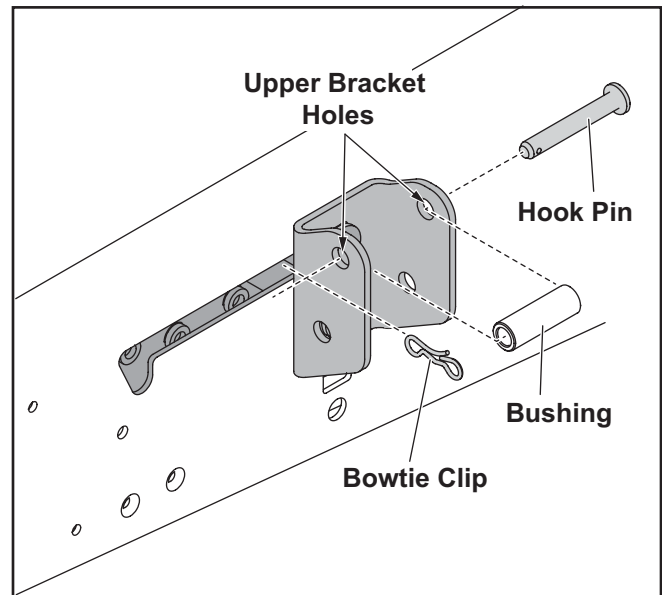
30765 UTV BED LATCH KIT

5. Raise the cargo box to access the inside of the left-hand frame rail.
6. Place the hook pin bracket on the frame rail opposite the holes identified in Step 4, facing the center of the vehicle.



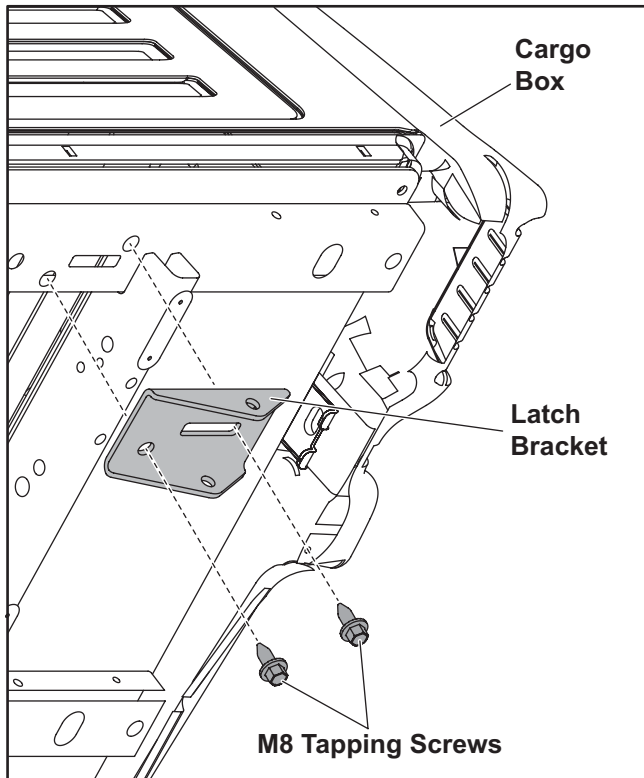
7. Place the bushings inside the frame rail via the slot and align to the holes identified in Step 4. While supporting the bushings, insert M8 x 60 mm carriage bolts through the bracket holes, bushings, and the frame rail. Secure with M8 nuts on the outside of the frame rail. Leave the fasteners loose to allow for bracket position adjustment.

8. Install the hook pin and bushing to the upper bracket hole and secure with a bowtie clip.

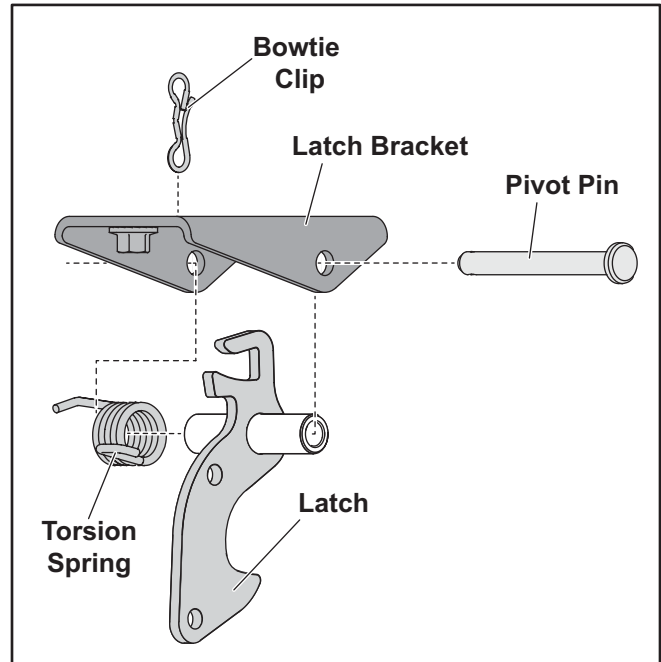


30765 UTV BED LATCH KIT

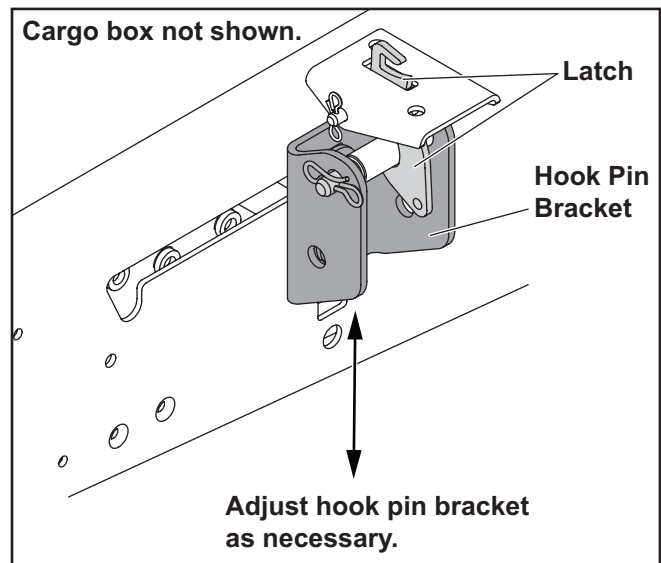
9. Install the latch bracket with two M8 self-tapping screws into the existing holes in the crossmember on the bottom of the front of the cargo box. The latch bracket will sit directly above the bushing bracket. Tighten screws to 19.5 ft-lb (26.4 N·m).



10. Place the torsion spring on the latch. Pin the latch assembly to the latch bracket with the pivot pin and secure with the bowtie clip.



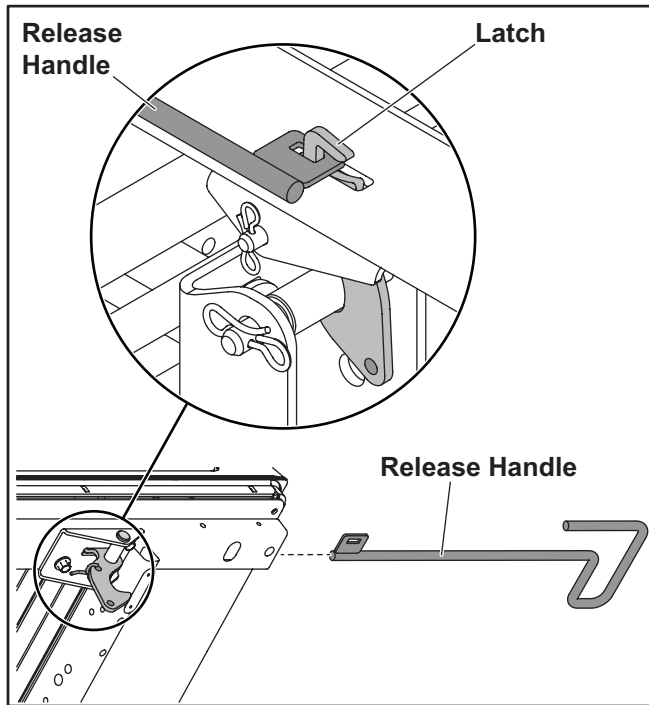
11. Lower the cargo box and adjust the hook pin bracket up or down so that the latch fully engages the pin. Tighten the nuts to 19.5 ft-lb (26.4 N·m).



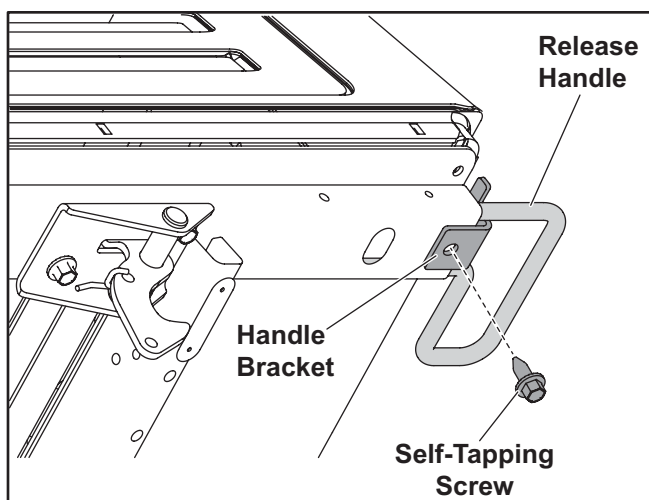
30765 UTV BED LATCH KIT

12. Remove the left-hand cargo box side according to the instructions in the vehicle's Operator's Manual.

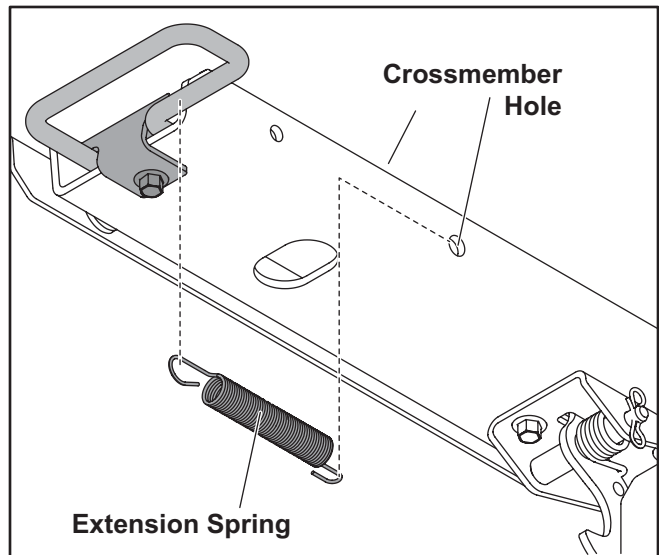
13. Slide the release handle into the crossmember as shown. Engage the latch with the release handle slot as shown.



14. Install the handle bracket to the crossmember and secure as shown with an M8 self-tapping screw. Tighten to 19.5 ft-lb (26.4 N·m).

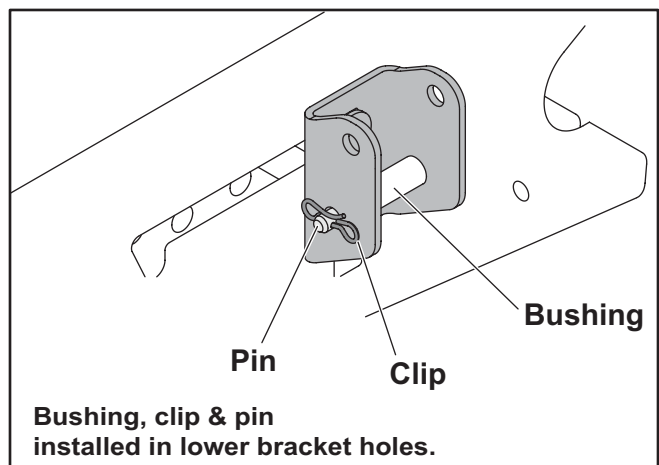


15. Loop the closed end of the extension spring onto the handle and hook the opposite end into the crossmember hole shown.



16. Reinstall the cargo box side. Reinstall the air intake hose, plenum, and fuel tank styling panel.

17. When the spreader is removed, move the latch bushing, pin, and clip to the lower bushing bracket hole to allow the Powerlift cargo box to function from the operator seat. When the spreader is reinstalled, the bushing, pin, and clip must be moved back to the upper hole.



30765 UTV BED LATCH KIT

Copyright © 2023 Douglas Dynamics, LLC. All rights reserved. This material may not be reproduced or copied, in whole or in part, in any printed, mechanical, electronic, film, or other distribution and storage media, without the written consent of Western Products. Authorization to photocopy items for internal or personal use by Western Products outlets or snowplow owner is granted.

Western Products reserves the right under its product improvement policy to change construction or design details and furnish equipment when so altered without reference to illustrations or specifications used. Western Products or the vehicle manufacturer may require or recommend optional equipment for spreaders. Do not exceed vehicle ratings with a spreader. Western Products offers a limited warranty for all spreaders and accessories. See separately printed page for this important information. The following are registered (®) trademarks of Douglas Dynamics, LLC: WESTERN®.

Printed in U.S.A.
