



WESTERN PRODUCTS
7777 NORTH 73RD STREET
P.O. BOX 23045
MILWAUKEE, WISCONSIN 53223



A DIVISION OF DOUGLAS DYNAMICS, INC.

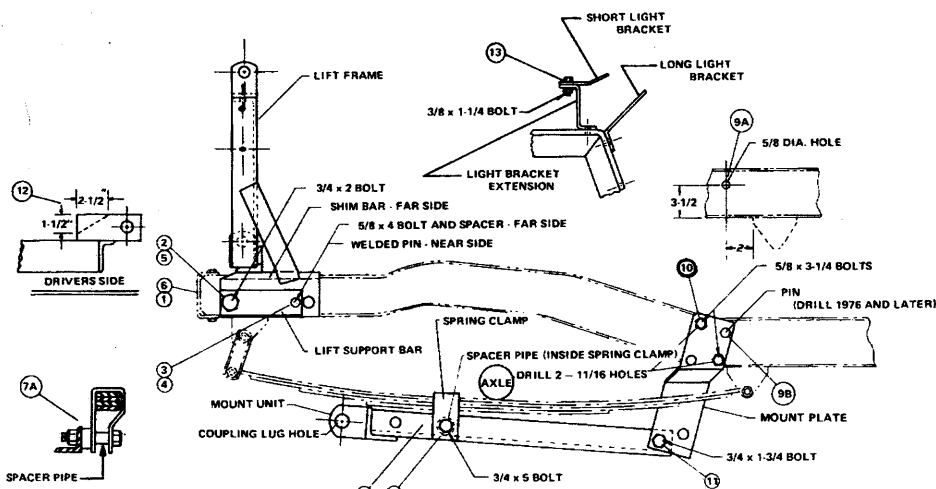
Box No. 59653
Model No. 220
Jeep CJ5/CJ6/CJ7 Only
Lift-Mount
1972 and Later

INSTALLATION INSTRUCTIONS

RECOMMENDED FASTENER TORQUE CHART				
SIZE	TORQUE IN FOOT POUNDS			
	GRADE 2	GRADE 5	GRADE 8	
1/4 - 20	6	9	13	
5/16 - 18	11	18	28	
3/8 - 16	19	31	46	
3/8 - 24	24	46	68	
7/16 - 14	30	50	75	
1/2 - 13	45	75	115	
9/16 - 12	66	110	165	
5/8 - 11	93	150	225	
3/4 - 10	150	250	370	
7/8 - 9	202	378	591	
1 - 8	300	583	893	

These torque values apply to lift-mount fasteners except those noted in the instructions where motion is desired.

MINIMUM VEHICLE RECOMMENDATIONS	
Aux. Light Kit	REAR BALLAST-300 to 500 lbs. when blade is attached.
H.D. Alternator	
H.D. Battery	
H.D. Suspension	



IMPORTANT: Preventative maintenance can prevent accidents. Regularly inspect all components and repair or replace any worn, loose or damaged parts immediately. Read instructions before assembling. Bolts should be finger tight until the installation is completed to allow sufficient adjustment for aligning holes and locating parts to vehicle frame.

Install snowplow as follows:

LIFT ASSEMBLY:

1. Remove bumper and plastic shield (if so equipped) located between vehicle grille and bumper. **NOTE:** The shield should be retained and replaced if the snowplow Lift-Mount is removed from the vehicle.
2. 1977 and later models, curb side only: Place 5/8" x 4" bolt with flatwasher, from inside of vehicle frame into rear attaching hole. Insert frame spacer tube into this hole from outside of frame. Position lift unit onto frame, aligning 3/4" hole at front of side plate to 3/4" hole in frame end. Place Shim Bar No. 59642 between frame and lift side plate. Secure, using 3/4" x 2" bolt and locknut. January 1976 and earlier: Same as above, only place washer and frame spacer tube onto bolt first (used in Step No. 3).

All others: (1/8" reinforcing plates welded on outside of vehicle frame.) Same as above but omit shim bar.

3. 1977 and Later: Align rear hole in shim bar and lift side plate to 4" bolt and fasten with locknut. All others: Secure, using 5/8" x 4" bolt with frame spacer tube and flatwasher and locknut.
4. Driver Side: Align 3/4" hole in front of lift side plate to 3/4" hole in frame end. Insert pin welded to lift support bar into hole in frame that aligns to double punched hole in lift. On 1976 and earlier vehicles the pin enters vehicle frame to shoulder only. This is normal and the bolt in Step No. 5 will hold support bar in place.
5. Fasten support bar and lift to frame using 3/4" x 2" bolt and locknut.
6. Replace bumper. Tighten all bolts securely.

MOUNT ASSEMBLY:

7. Install the spring clamp over the springs ahead of the axle U-bolt clamp plates.
8. Place mount unit under vehicle and raise mount and align holes located approximately 6 inches back, to spring clamp and spacer pipe. Secure, using 3/4" x 5" bolt and locknut. Tighten as indicated in Step 11 and inset 7A.
9. **CAUTION:** Before drilling check frame to be sure drill will not damage brake or gas line.
 - A. 1976 and Later - Drill one 5/8" diameter hole per side, 3-1/2 inches up and 2" forward of the front edge of the rear hanger bracket of the front spring. (See inset) Install the mount plate with the pin into this hole.
 - B. 1972 thru 1975 - Install the mount plate with the pin into the hole located straight up from the front edge of the rear hanger bracket of the front spring.
10. Raise rear of mount and align front 3/4" hole in mount plate to mount. Using the plate as a guide, mark and drill two additional holes per side for 5/8" x 3-1/4" bolts, flatwashers and locknuts. Fasten plates to frame using these bolts.
11. Couple rear of mount unit to plates, using 3/4" x 1-3/4" bolts and locknuts. Tighten all bolts securely. Tighten bolts installed in Step No. 8 until the spring clamps are compressed completely about springs as shown inset 7A.
12. Flamecut driver side A-frame ear along dotted line to provide additional clearance to steering gear and install A-frame stools as indicated on Form No. 2975.

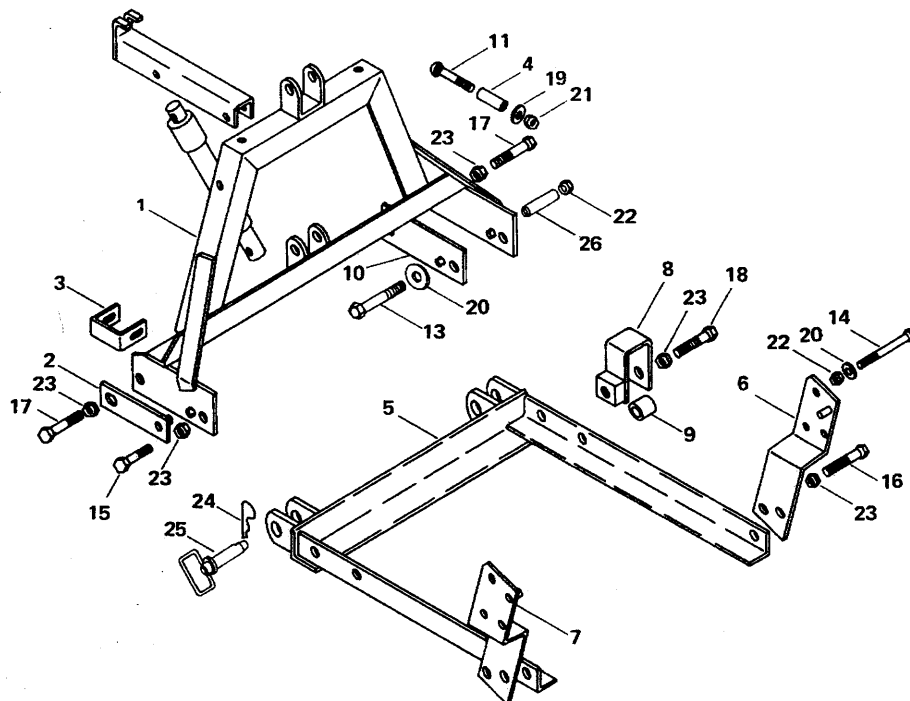
LIGHT KIT SUPPLEMENT:

13. To raise Western auxiliary headlight kit brackets assemble long light bracket to top holes in side of lift frame and light bracket extension to top of lift frame. Attach short light bracket to the light bracket extension with 3/8" x 1-1/4" bolts, lockwashers and hexnuts. Complete light kit installation per instructions furnished. The auxiliary headlights can be used at all times if existing headlight beams are obscured by the auxiliary headlight brackets.

HYDRAULICS: Mount the Hydraulic System using the instructions furnished in the Hydraulic Carton.

Box No. 59653
 Model No. 220
 Jeep CJ5/CJ6/CJ7 & Commando
 Lift-Mount
 1972 and Later

PARTS LIST



12865-8312

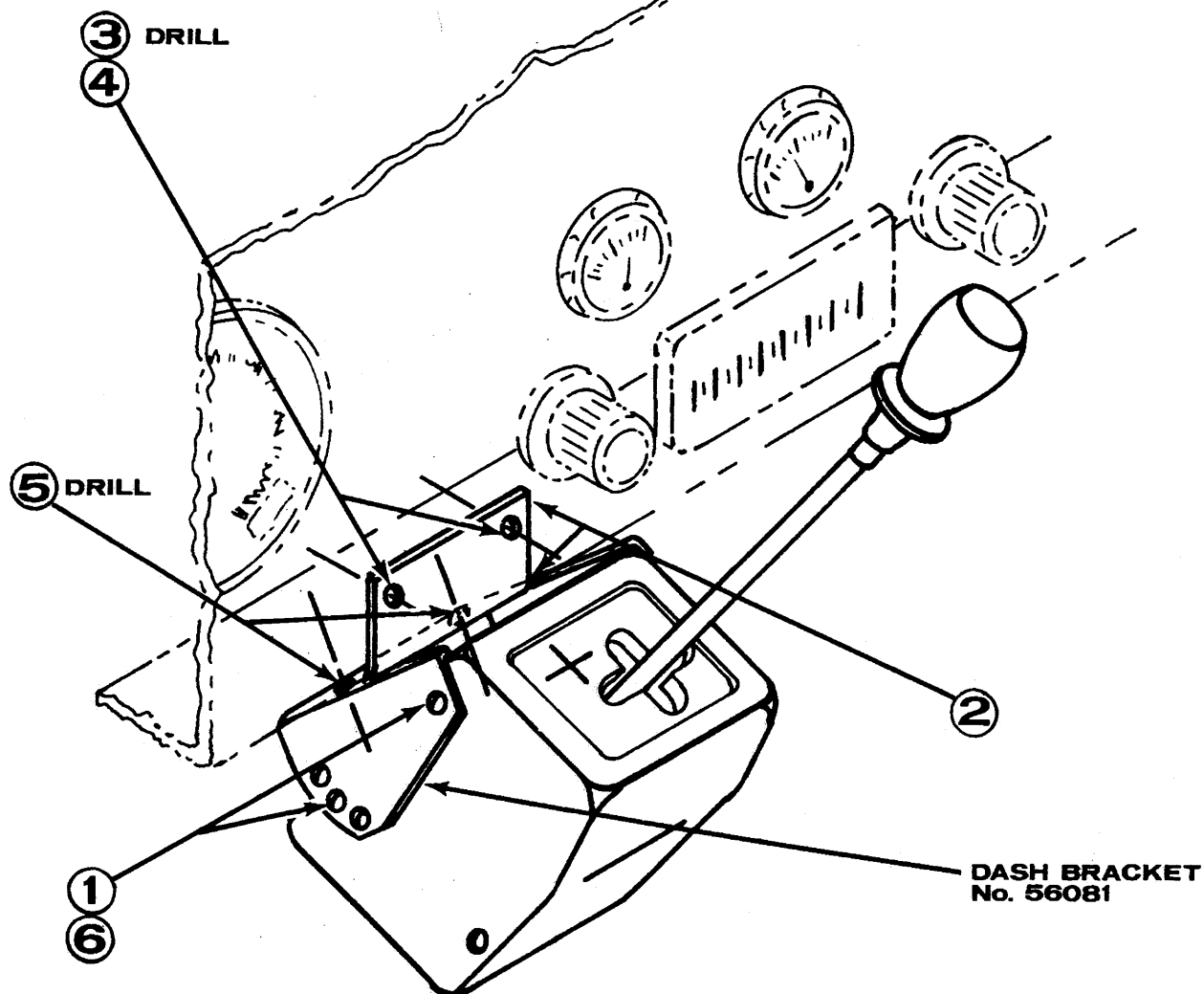
12856-8612

Item	Part No.	Quan.	Description
1	59643	1	Lift Frame Unit
2	59084	1	Lift Support Bar — (CJ5/CJ6/CJ7 Only)
3	59082	2	Bumper Bracket (Commando Only)
4	60650	2	Tube Spacer — (Commando Only)
5	59092	1	Mount Unit
6	58682	1	Mount Plate — Curb Side
7	58683	1	Mount Plate — Driver Side
8	59765	2	Spring Clamp
9	59354	2	Spacer Pipe
10	59642	1	Shim Bar (Jan. 1976 & Earlier — 1977 & Later)
11	90229	2	Carriage Bolt — 7/16"-14 x 3-1/2" Long
13	90135	1	Capscrew — 5/8"-11 x 4" Long — Grade 5
14	90133	4	Capscrew — 5/8"-11 x 3-1/4" Long — Grade 5
15	90152	1	Capscrew — 3/4"-10 x 1-1/2" Long — Grade 5
16	90153	2	Capscrew — 3/4"-10 x 1-3/4" Long — Grade 5
17	90154	2	Capscrew — 3/4"-10 x 2" Long — Grade 5
18	90188	2	Capscrew — 3/4"-10 x 5" Long
19		2	Flat Washer — 7/16"
20		5	Flat Washer — 5/8"
21	91334	2	Locknut — 7/16"-14 — Nylon Insert Type
22	91337	5	Locknut — 5/8"-11 — Nylon Insert Type
23	91338	6	Locknut — 3/4"-10 — Nylon Insert Type
24	91965	2	Hairpin Cotter — 5/32" x 2-15/16" O/A Length
25	93028	2	Hitch Pin — 1" x 3-1/2" Long
26	59652	1	Frame Spacer Tube

PARTS NOT SHOWN

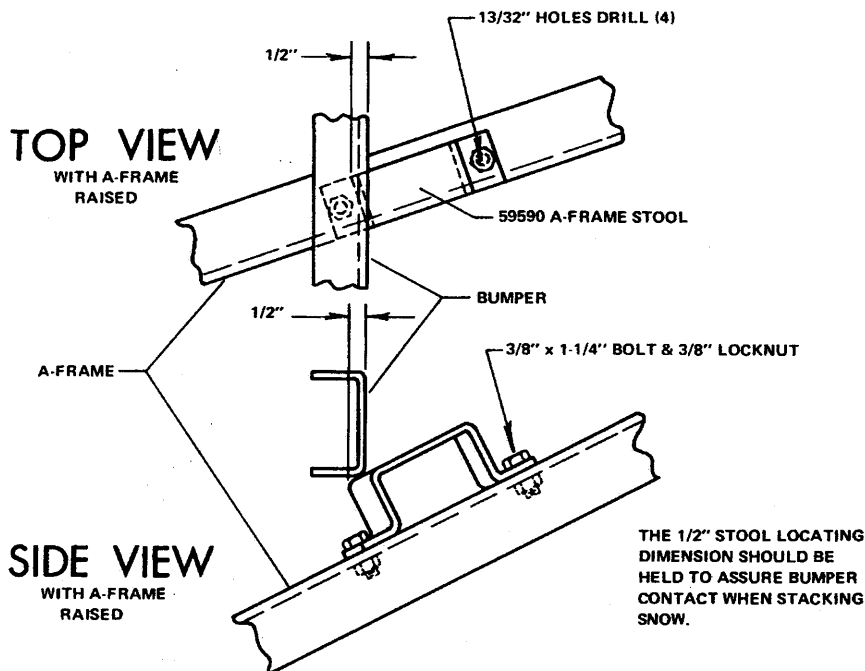
59590	2	A-Frame Stool (to be added to 23936 A-Frame)
90040	4	Capscrew — 3/8"-16 x 1-1/4" Long — Grade 5 (to be added to 23936 A-Frame)
91333	4	Locknut — 3/8"-16 — Nylon Insert Type (to be added to 23936 A-Frame)
59413	2	Light Bracket Extension (See Installation Instructions)
90040	2	Capscrew — 3/8"-16 x 1-1/4" Long — Grade 5 (Use with Light Bracket Extension)
	2	Hexnut — 3/8"-16 (Use with Light Bracket Extension)
	2	Lock Washer — 3/8" (Use with Light Bracket Extension)

**INSTALLATION INSTRUCTIONS
FOR - IIIa CONTROL
TO VEHICLE INSTRUMENT PANEL
JEEP CJ-5 - 6 & 7**



1. Secure dash bracket to the IIIa Control using 4-No. 8 x 5/8" long hex head screws.
2. Locate IIIa Control as shown adjacent to radio or wherever is most convenient. The top section of the bracket should fit flat against the front of the dash, with the bend tight against the corner of the dash flange. Verify that IIIa Control lever will clear vehicle components in all positions and for adequate drill clearance before drilling holes.
3. Mark and drill two 1/8" holes in the dash to align to top holes in the bracket.
4. Remove the bracket from the IIIa Control and fasten it to the dash using 2-No. 10 sheet metal screws and lock washers.
5. Diagonally drill two holes into the bottom flange of the dash to align to the holes in the bracket. Secure using No. 10 sheet metal screws and lock washers.
6. Place IIIa Control into bracket and fasten in desired position.

1. 59590 A-Frame Stools are only required when Hydra-Turn® Power Angling is installed. (And all Jeeps with power steering.)
2. Install complete Snowplow Lift-Mount and Hydra-Turn Kit per furnished instructions.
3. Locate A-Frame Stools to both sides of the A-Frame as shown below. Using the Stools as a guide, mark and drill four (4) 13/32" holes. Fasten Stools to A-Frame with furnished 3/8" x 1-1/4" Bolts and Locknuts. Stools may be welded to A-Frame if so desired.



2975-7802

INSTALLATION INSTRUCTIONS FOR 59700 BLADE GUIDE ASSEMBLY

The following instructions simply outline the attachment of this blade guide assembly.

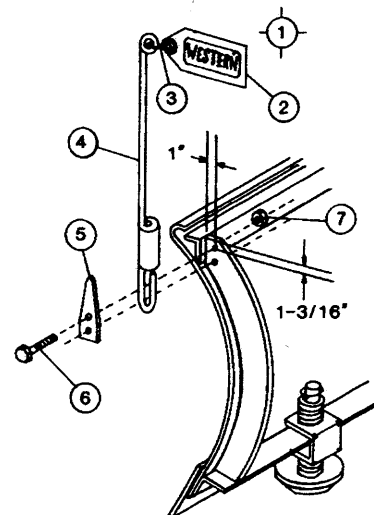
- Step 1. Lower blade to ground level.
- Step 2. If hole is not pre-drilled, drill one 11/32" hole, 1-3/16" down and 1" out on the outside rib of blade. See diagram below.
- Step 3. Insert pointed end of clamp into coil of guide. Attach guide to rib using top hole of clamp. Secure assembly using supplied 5/16" x 1" bolt and locknut. Tighten until guide will stand alone perpendicular to road surface.
- Step 4. If hole is not pre-drilled, use lower hole of clamp as locator, drill bottom hole 11/32".
- Step 5. Bolt lower hole in place. Finish securing top bolt.
- Step 6. Attach other side following above steps.

Pictorial view supplied below. Remember to use standard methods and practices in attaching blade guides including wearing safety glasses during drilling.

PARTS LIST

59700 - BLADE GUIDE ASSEMBLY

ITEM	PART NO.	QUAN.	DESCRIPTION
1	59697	2	Blade Guide Rod, S-Hook & Flag
2	59694	1	Flag
3	59696	1	S-Hook
4	59691	1	Blade Guide Rod
5	59946	2	Clamp
6		4	Capscrew 5/16 - 18 x 1 Gr 2
7		4	Locknut 5/16 - 18 Nylon Insert



3009-7911

The following are registered® or unregistered™ Trade Marks of Douglas Dynamics, Inc.
WESTERN® ISARMATIC® Hydra-Turn® Roll-Action™ SnowKing™

Western reserves the right under its Product Improvement Policy to change construction or design details and furnish equipment when so altered without reference to illustrations or specifications used herein.