



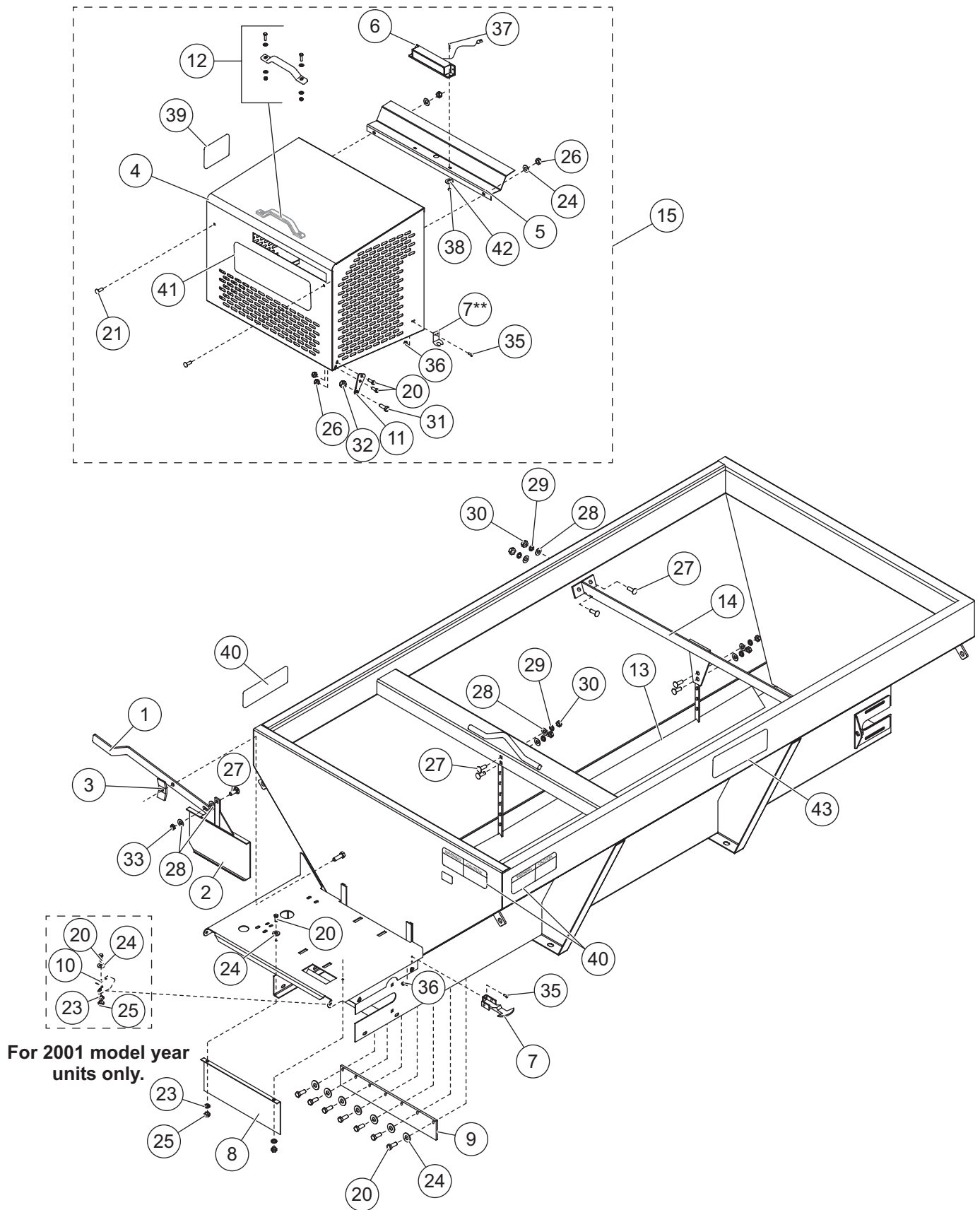
# **BODY COMPONENTS**

## **ICE BREAKER™ Hopper Spreader**

### **Parts List**

This Parts List is for WESTERN® ICE BREAKER Hopper Spreaders with serial numbers beginning with 0806 and higher.

# BODY COMPONENTS



## BODY COMPONENTS

Body Components							
Item	Part	Qty	Description	Item	Part	Qty	Description
1	68977	1	Feed Gate Lever MS	9	65642	1	Wiper Belt
	94913	1	Feed Gate Lever SS	10	94557	1	Bracket, Hinge
2	68410	1	Feed Gate MS	11	94556	2	Tab, Hinge
	68985	1	Feed Gate SS	12	99098	1	Plastic Handle Kit
3	65218	1	Wing Nut MS	13*	94949**	1	Inverted V 7' Kit MS
	65392	1	Wing Nut SS		94950**	1	Inverted V 7' Kit SS
4	NA	1	Engine Cover MS		94948**	1	Inverted V 8' RC/HC & 9' HC Kit SS
	NA	1	Engine Cover SS		94947**	1	Inverted V 8' RC/HC & 9' Kit MS
5	94582-1	1	Engine Cover Baffle		65668**	1	Inverted V 10' Kit MS
6	65361	1	Center High Mount Stop Light		95670**	1	Inverted V 10' Kit SS
7	P3045**	2	Latch Kit	14	65327	AR	Inverted V Support
8	94692***	1	Conveyor Guard MS	15	94698-1	1	Engine Cover Kit MS
	94899***	1	Conveyor Guard SS		94951-1	1	Engine Cover Kit SS
AR = As Required				MS = Mild Steel		NA = Not Available	
						SS = Stainless Steel	

\* Inverted Vs for 7' and 8' RC hoppers are sold as accessories.

Inverted Vs are standard equipment for 8', 9', and 10' HC hoppers.

\*\* Includes all hardware.

\*\*\* For use with offset chute only.

Engine Cover Kit							
Item	Part	Qty	Description	Item	Part	Qty	Description
4	NA	1	Engine Cover MS	26	67076	8	1/4 Hex Locknut SS
	NA	1	Engine Cover SS	31	91015	2	3/8-16 x 1 Hex Cap Screw SS
5	94582	1	Engine Cover Baffle	32	91351	2	3/8-16 Hex Locknut SS
6	65361	1	Center High Mount Stop Light	37	90693	2	#6-32 x 3/4 Pan Head Machine Screw SS
7	P3045**	2	Latch Kit				
11	94556	2	Tab, Hinge	38	91398	2	#6-32 Hex Locknut SS
12	99098	1	Plastic Handle Kit	39	65097	1	Label – Information (Warning)
20	90381	4	1/4-20 x 3/4 Hex Cap Screw SS	41	44450	1	Label – Identity, WESTERN®
21	94580	2	1/4-20 x 3/4 Carriage Bolt SS	42	95227	2	#10 Flat Washer Type A SS
24	91013	2	1/4 Flat Washer SS				
NA = Not Available				MS = Mild Steel		SS = Stainless Steel	

\*\* – Includes all hardware

## BODY COMPONENTS

Body Components – Hardware							
Item	Part	Qty	Description	Item	Part	Qty	Description
20	90381	16	1/4-20 x 3/4 Hex Cap Screw SS	33	67368	1	3/8-16 Jam Locknut SS
21	94580	2	1/4-20 x 3/4 Carriage Bolt SS	34	68345	4	3/8-16 x 1-1/2 Carriage Bolt SS
22	63938	2	1/4-20 x 3/4 Machine Screw SS	35	67092	8	#10-24 x 1/2 Socket Button Head Cap Screw SS
23	91281	11	1/4 Lock Washer SS	36	91330	8	#10-24 Hex Locknut SS
24	91013	13	1/4 Flat Washer SS	37	90693	2	#6-32 x 3/4 Pan Head Machine Screw SS
25	91429	11	1/4-20 Hex Nut SS	38	91398	2	#6-32 Hex Locknut SS
26	67076	8	1/4 Hex Locknut SS	39	65097	1	Label – Information (Warning)
27	90375	13	3/8-16 x 1 Carriage Bolt SS	40	68595	3	Label – Warning/Caution
28	91123	14	3/8 Flat Washer SS	41	44450	1	Label – Identity, WESTERN®
29	91282	12	3/8 Lock Washer SS	43	94696	2	Label – Identity, ICE BREAKER™
30	91431	12	3/8-16 Hex Nut SS				
31	91015	2	3/8-16 x 1 Hex Cap Screw SS				
32	91351	2	3/8-16 Hex Locknut SS				
SS = Stainless Steel							

Copyright © 2017 Douglas Dynamics, LLC. All rights reserved. This material may not be reproduced or copied, in whole or in part, in any printed, mechanical, electronic, film, or other distribution and storage media, without the written consent of Western Products. Authorization to photocopy items for internal or personal use by Western Products outlets or spreader owner is granted.

Western Products reserves the right under its product improvement policy to change construction or design details and furnish equipment when so altered without reference to illustrations or specifications used. Western Products or the vehicle manufacturer may require or recommend optional equipment for spreaders. Do not exceed vehicle ratings with a spreader. Western Products offers a limited warranty for all spreaders and accessories. See separately printed page for this important information. The following are registered (®) or unregistered (™) trademarks of Douglas Dynamics, LLC: ICE BREAKER™, WESTERN®.

Printed in U.S.A.