



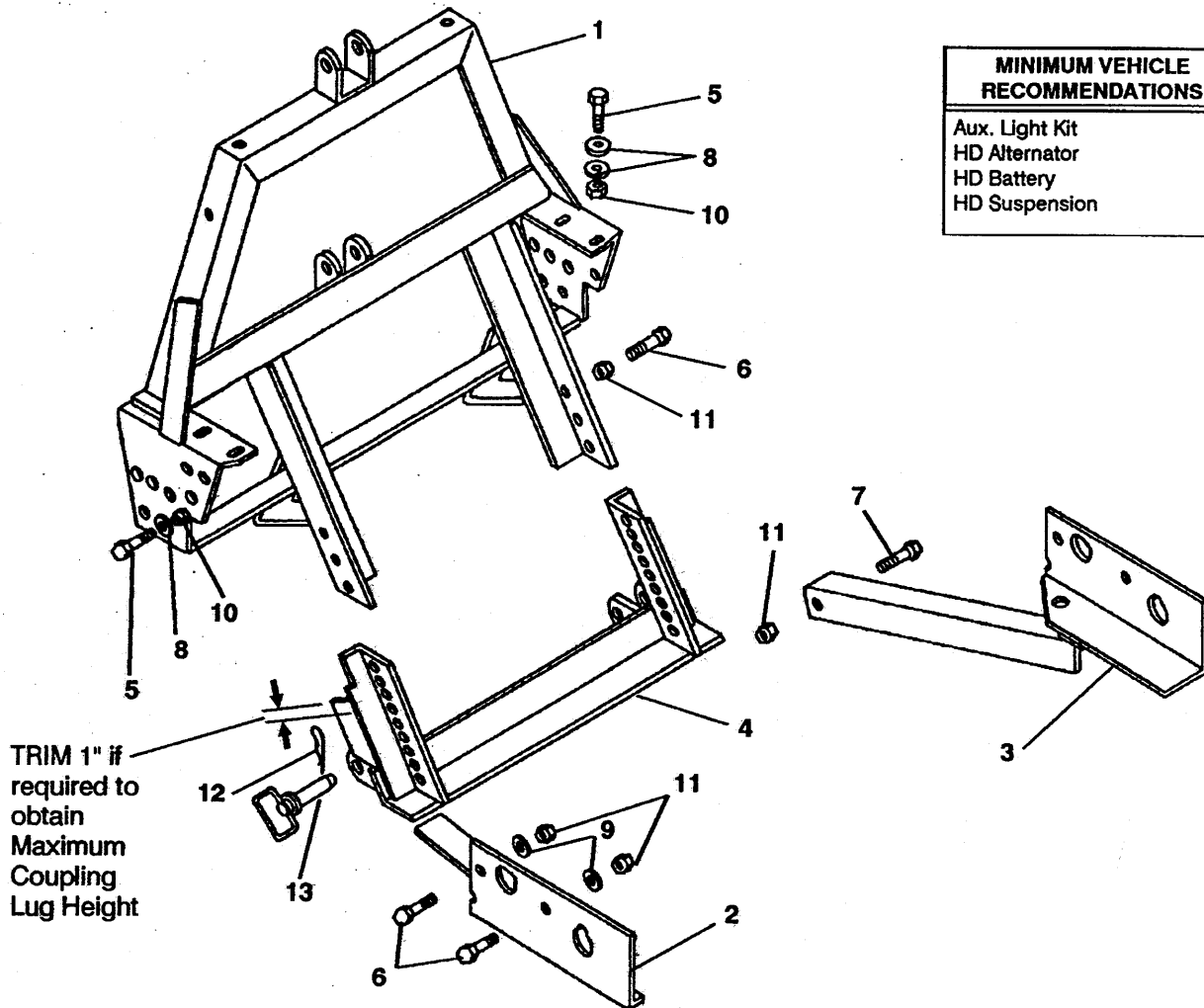
WESTERN PRODUCTS
7777 NORTH 73RD STREET
P.O. BOX 23045
MILWAUKEE, WISCONSIN 53223



A DIVISION OF DOUGLAS DYNAMICS, INC.

Box No. 59665
Model No. 990
Dodge W100-150 '72 & Later
W200-250/300-350 '73 & Later
Dodge Ram Charger 4 x 4
Plymouth Trail Duster 4 x 4
September 20, 1990

PARTS DIAGRAM & LIST



MINIMUM VEHICLE RECOMMENDATIONS

Aux. Light Kit
HD Alternator
HD Battery
HD Suspension




ITEM	PART NO.	QUAN.	DESCRIPTION
1	59516	1	LIFT FRAME 990
2	59523	1	THRUST ARM DR
3	59525	1	THRUST ARM CU
4	59595	1	SPREADER
5	90066	10	7/16-14X1-1/4 HX CS G5 ZP
6	90128	8	5/8-11X1-3/4 HX CS G5 ZP
7	90130	2	5/8-11X2-1/4 HX CS G5 ZP
8	91104	14	7/16 PLAIN WASHER TY A STD ZP
9	91106	4	5/8 PLAIN WASHER TY A STD ZP
10	91334	10	7/16-14 PT HX LK NUT NYIS ZP
11	91337	10	5/8-11 PT HX LK NUT NYIS ZP
12	91965K	2	.148X2.9375 HAIRPIN COTTER ZP
13	93028K	2	1X3-1/2 HITCH PIN

NOT SHOWN

60109	1	FLASHER HD
-------	---	------------

Abbreviations

CS	Capscrew
CU	Curb Side
DR	Driver Side
G	Grade
HD	Heavy Duty
HX	Hex
LK	Lock
NYIS	Nylon Insert
PT	Prevailing Torque
STD	Standard
TY	Type
ZP	Zinc Plated

Recommended Fastener Torque Chart (Ft.-Lbs.)					
Size	 SAE Grade 2	 SAE Grade 5	 SAE Grade 8		
1/4-20	6	9	13		
5/16-18	11	18	28		
3/8-16	19	31	46		
3/8-24	24	46	68		
7/16-14	30	50	75		
1/2-13	45	75	115		
9/16-12	66	110	165		
5/8-11	93	150	225		
3/4-10	150	250	370		
7/8-9	202	378	591		
1-8	300	583	893		

Metric Grade 8.8 (Ft.-Lbs.)			
Size	Torque	Size	Torque
M 6	7	M 12	60
M 8	17	M 14	95
M 10	35	M 16	155

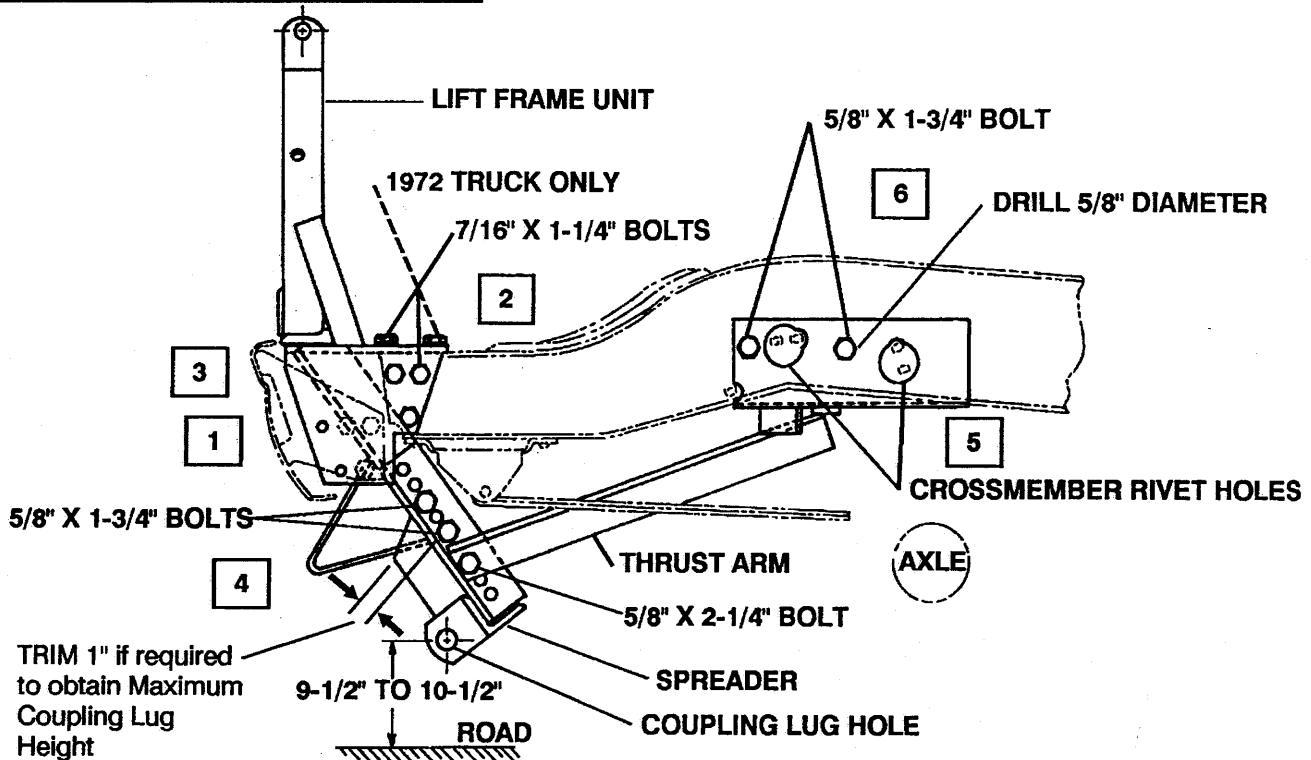
These torque values apply to lift-frame fasteners except those noted in the instruction.

**NOTE; DIRECT
HYDRA-TURN®
HOSES AND
FITTINGS
AWAY FROM
STOPS AND
PINCH POINTS**

Box No. 59665
Model No. 990
Dodge W100-150 '72 & Later
W200-250/300-350 '73 & Later
Dodge Ram Charger 4 x 4
Plymouth Trail Duster 4 x 4

INSTALLATION INSTRUCTIONS

AS VIEWED FROM DRIVER SIDE



IMPORTANT: Read instructions before assembling. Bolts should be finger tight until the installation is completed. Preventive maintenance can prevent accidents. Use standard methods and practices when attaching snowplow including wearing safety glasses during drilling.

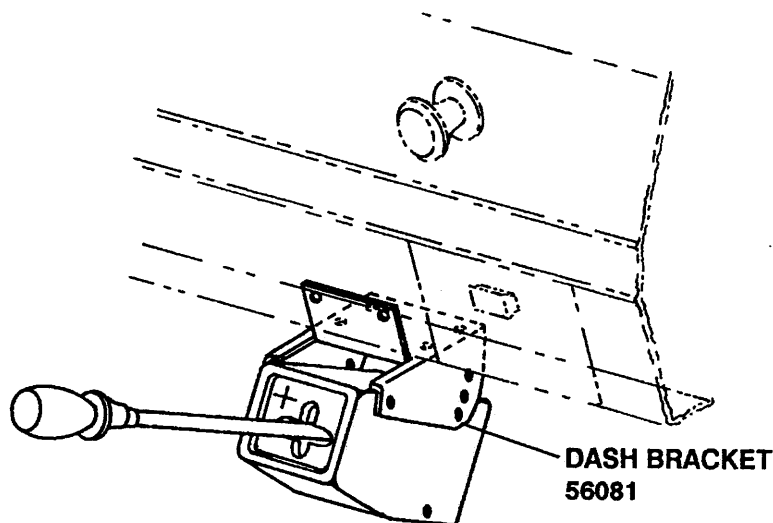
1. Remove the bumper from the vehicle, leaving the brackets attached to the bumper.
2. Attach the Lift Frame as shown using 7/16" x 1-1/4" bolts, flat washers to slots and locknuts.
3. Move each bumper bracket outward 1/4". Replace bumper, placing the brackets to the outside of the Lift Frame side plates. 1991 and later, use rear holes as shown, earlier models use forward holes. Secure using existing fasteners.
4. Fasten Spreader angle to Lift Frame with coupling lug holes between 9-1/2" to 10-1/2" from road. Use 5/8" x 1-3/4" bolts and locknuts for top holes. NOTE: Spreader reinforcement gusset may need to be trimmed 1" to maximize road clearance.
5. Position Thrust Arms onto outside of vehicle frame with angles to the inside of the springs. Attach Thrust Arm angle to Lift Frame and Spreader with 5/8" x 2-1/4" bolts and locknuts.
6. Hold Thrust Arms tight to frame (Frame rivet head clearance is provided by 2" holes in Thrust Arm plates). Drill 5/8" holes using Thrust Arm plates as a template. Secure with 5/8" x 1-3/4" bolts, flat washers to frame and locknuts.

TIGHTEN ALL BOLTS TO CORRESPONDING TORQUE CHART VALUES

LIGHT KIT ASSEMBLY - FOR DUAL TYPE 2B HEADLAMPS - Use Box No. 60740 Headlamp Kit - 4 Wire and Box No. 61430 Harness Bracket Kit - 2B/2D 5W NF. 4 Wire headlamps do not have blue wires. Blue wire connections per paragraph 5 of 5 Wire installation instructions are not required for this installation. Install turn signal flasher furnished in Floor Bracket carton in this box. **FOR QUAD TYPE 1A & 2A HEADLAMPS** - Use Box No. 60740 Headlamp Kit - 4 Wire and Box No. 60765 Harness Bracket Kit - 1A & 2A.

**INSTALLATION INSTRUCTIONS
FOR — IIIa CONTROL TO
VEHICLE INSTRUMENT PANEL
DODGE**

ATTENTION: Two brackets for the IIIa Control are furnished with this plow model. With the introduction of a plastic instrument panel on the '81 vehicle, it may be desirable to install the IIIa Control using the Floor Bracket, whenever possible.

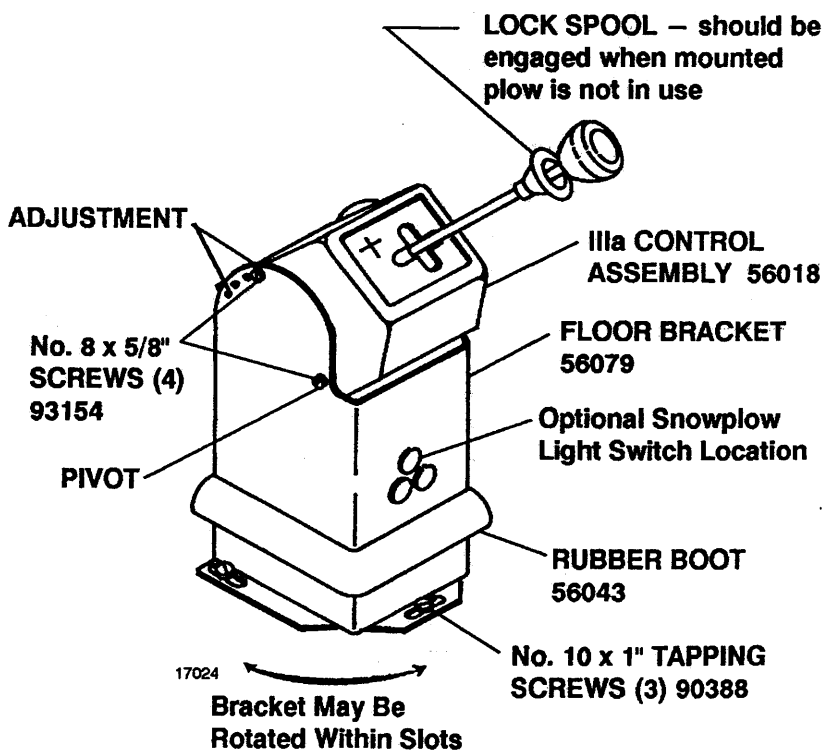


1. Secure Dash Bracket to the IIIa Control using 4-No. 8 x 5/8" long hex head screws.
2. Locate IIIa Control to the left of the ash tray or wherever is most convenient. The lower half of the bracket should fit flat against the bottom flange of the dash. Verify that IIIa Control lever will clear vehicle components in all positions and for adequate drill clearance before drilling holes.
3. Mark and drill two 1/8" holes in the dash to align to the top holes in the bracket.
4. Remove the bracket from the IIIa Control and loosely fasten it to the dash using 2-No. 10 sheet metal screws and lock washers.
5. Mark and drill two holes into the bottom flange of the dash to align to the holes in the bracket. Secure using No. 10 sheet metal screws and lock washers. Tighten all four screws securely.
6. Place IIIa Control into bracket and fasten in desired position.

13475

**INSTALLATION INSTRUCTIONS
FOR — IIIa CONTROL TO
VEHICLE TRANSMISSION TUNNEL**

The IIIa Control should be placed in the vehicle so it is convenient to the operator without interfering with shift levers or the seat when it is fully forward. Use the bracket to drill three 9/64" holes through the floorboard. These holes should be drilled in the center of the Floor Bracket slots, this will permit the bracket to be adjusted at the operators discretion. Fasten using No. 10 x 1" screws and lock washers. Slide the Rubber Boot down to cover the flanges. Align forward holes of bracket and IIIa Control, place No. 8 x 5/8" long slotted hex head screws in these holes. Select best position for the IIIa Control and secure using two more of the same size screws after cable installation is completed.



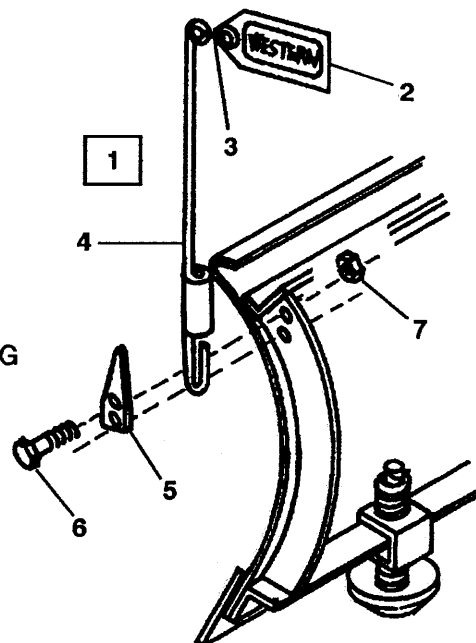
13088-8912

INSTALLATION INSTRUCTIONS FOR 59700 BLADE GUIDE ASSEMBLY

Insert pointed end of clamp into coil of Blade Guide Rod. Attach a Blade Guide Rod to each outer rib using 5/16" x 1" capscrews and locknuts as shown in diagram..

PARTS LIST 59700 — BLADE GUIDE ASSEMBLY

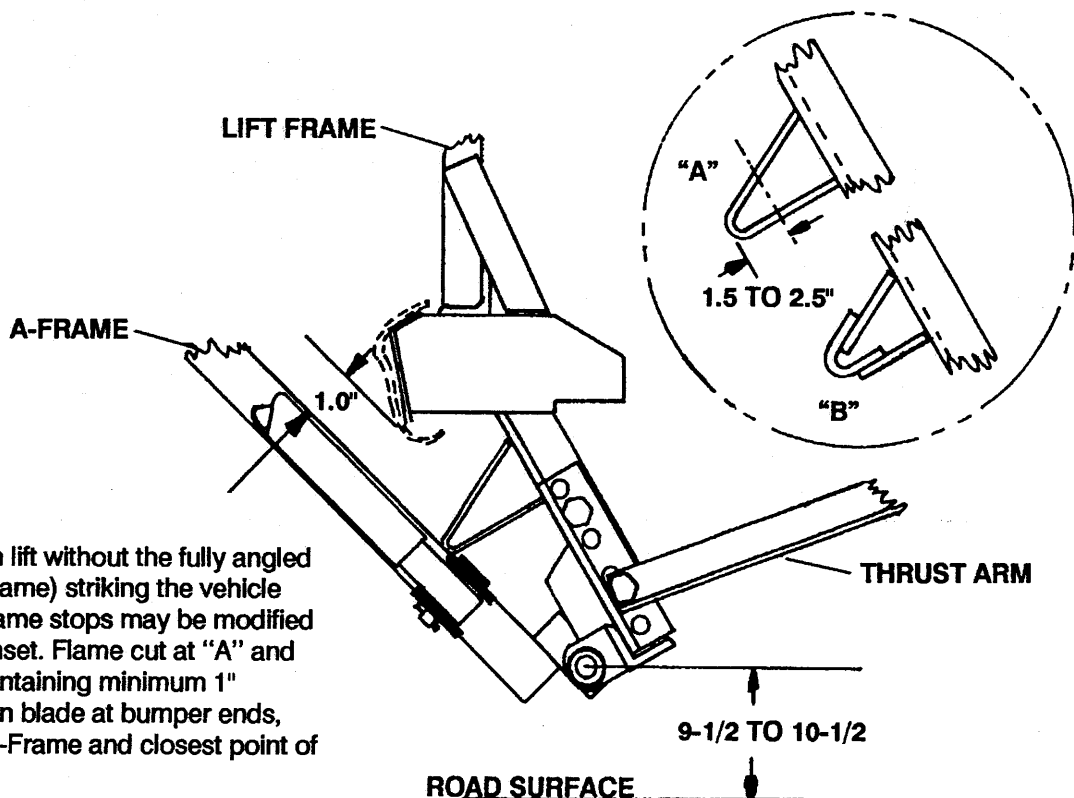
Item	Part No.	Quan.	Description
1	59697	2	BLADE GUIDE ROD, S-HOOK & FLAG
2	59694K	1	BLADE GUIDE FLAG
3	59696	1	S-HOOK
4	59691	1	BLADE GUIDE ROD
5	59946	2	CLAMP
6	90020	4	5/16-18X1 HX CS G2 ZP
7	91332	4	5/16-18 PT HX LK NUT NYIS ZP



13009-8908

A-FRAME STOP MODIFICATION INSTRUCTIONS

With snowplows mounted to vehicles having small tire size options, the blade lift may be less than desirable. If this condition exists on any installation, the height of blade lift can be increased by cutting and rewelding the A-Frame stops on the mount as shown in the sketch below.



To gain maximum lift without the fully angled blade (or the A-Frame) striking the vehicle bumper, the A-Frame stops may be modified as shown in the inset. Flame cut at "A" and reweld at "B" maintaining minimum 1" clearance between blade at bumper ends, and/or between A-Frame and closest point of bumper.

13027-7707

The following are registered® and unregistered™ Trade Marks of Douglas Dynamics, Inc.
WESTERN® ISARMATIC® Hydra-Turn® Roll-Action™ PRO-GUARD™

Western reserves the right under its Product Improvement Policy to change construction details and furnish equipment when so altered without reference to illustrations or specifications used herein.