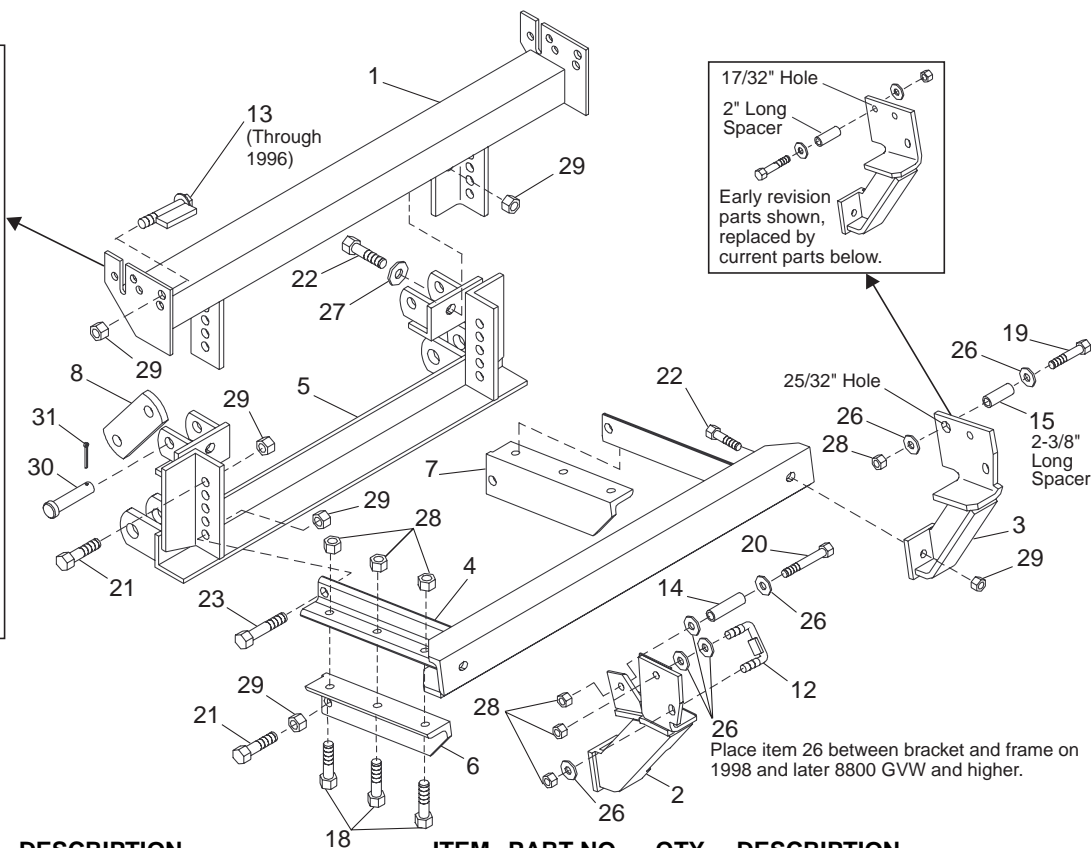
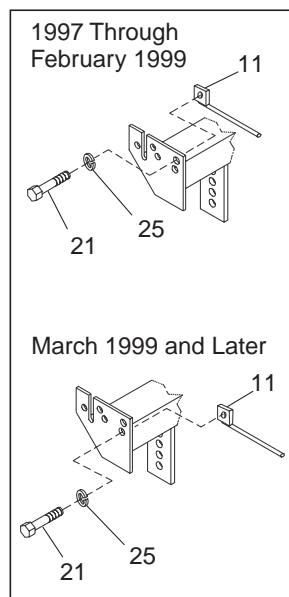




WESTERN PRODUCTS
P.O. BOX 245038
MILWAUKEE, WI 53224-9538

dd A DIVISION OF DOUGLAS DYNAMICS, L.L.C.

PARTS LIST 62035 **MODEL 985** **Dodge Ram W1500, W2500** **and W3500 1994 & Later** **May 24, 1999**



ITEM	PART NO.	QTY.	DESCRIPTION
1	61988	1	MOUNT FRAME 985
2	61995	1	THRUST ARM - DS
3	61992	1	THRUST ARM - PS
4	62001	1	THRUST FRAME 985
5	62017	1	SPREADER
6	62020	1	BRACE - DS
7	62021	1	BRACE - PS
8	61412	2	LINK ARM
11	62288	2	NUT BAR
12	62024	2	U-BOLT
13	62025	2	BOLT ASSEMBLY
14	62033	1	TUBE SPACER DS 2-11/16" LONG
15	62062	1	TUBE SPACER PS 2-3/8" LONG
18	90100	6	1/2-13X1-1/2 HX CS G5 ZYC
19	90106	1	1/2-13X3-1/2 HX CS G5 ZP
20	90109	1	1/2-13X4-1/2 HX CS G5 ZP
21	90128	6	5/8-11X1-3/4 HX CS G5 ZP
22	90129	4	5/8-11X2 HX CS G5 ZP
23	90130	2	5/8-11X2-1/4 HX CS G5 ZP
25	91206	2	5/8 SP LK WASHER ZYC
26	91105	8	1/2 PLAIN WASHER TY A STD ZYC
27	91139	2	5/8 PLAIN WASHER TY A SAE ZP
28	91335	12	1/2-13 PT HX LK NUT NYIS ZYC
29	91337	12	5/8-11 PT HX LK NUT NYIS ZYC

ITEM	PART NO.	QTY.	DESCRIPTION
30	93062	2	CLEVIS PIN 3/4"X3-1/4" G5 ZYC
31	91911	2	5/32X1-1/2 COTTER PIN ZYC

Not Shown

56080	1	DASH BRACKET
61536	4	CABLE TIE - LONG
91055	2	M6-1.00X25 HXW CS G8.8
91056	2	M6-1.00 HX NUT
91119	6	3/16 PLAIN WASHER

Parts listed above may be found in one of the following assemblies

62034	1	BOLT BAG ASSY (62035)
62036	1	PARTS BAG ASSY (62035)

Abbreviations

ASSY	Assembly
CS	Cap Screw
DS	Driver Side
DS	Driver Side
G	Grade
HX	Hex
HXW	Hex Washer
LK	Lock
NYIS	Nylon Insert
PS	Passenger Side
PT	Prevailing Torque
SAE	Society of Automotive Engineers
SP	Spring
STD	Standard
TY	Type
ZP	Zinc Plate
ZYC	Zinc Yellow Chromate

Copyright© 1999 Douglas Dynamics, L.L.C. All rights reserved. This material may not be reproduced or copied, in whole or in part, in any printed, mechanical, electronic, film or other distribution and storage media, without the written consent of Western Products. Authorization to photocopy items for internal or personal use by Western Products outlets is granted.

Western Products reserves the right under its Product Improvement Policy to change construction or design details and furnish equipment when so altered without reference to illustrations or specifications used herein. Western Products and the vehicle manufacturer may require and/or recommend optional equipment for snow removal. Western Products offers a limited warranty on all snowplows and accessories. See separately printed page for this important information. The following are registered® trademarks of Douglas Dynamics, L.L.C.: UNIMOUNT® and WESTERN®.