

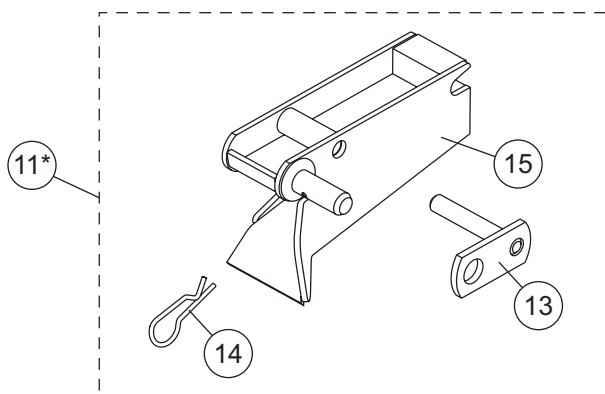
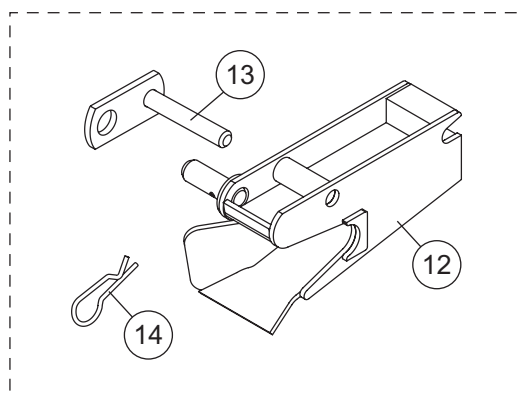
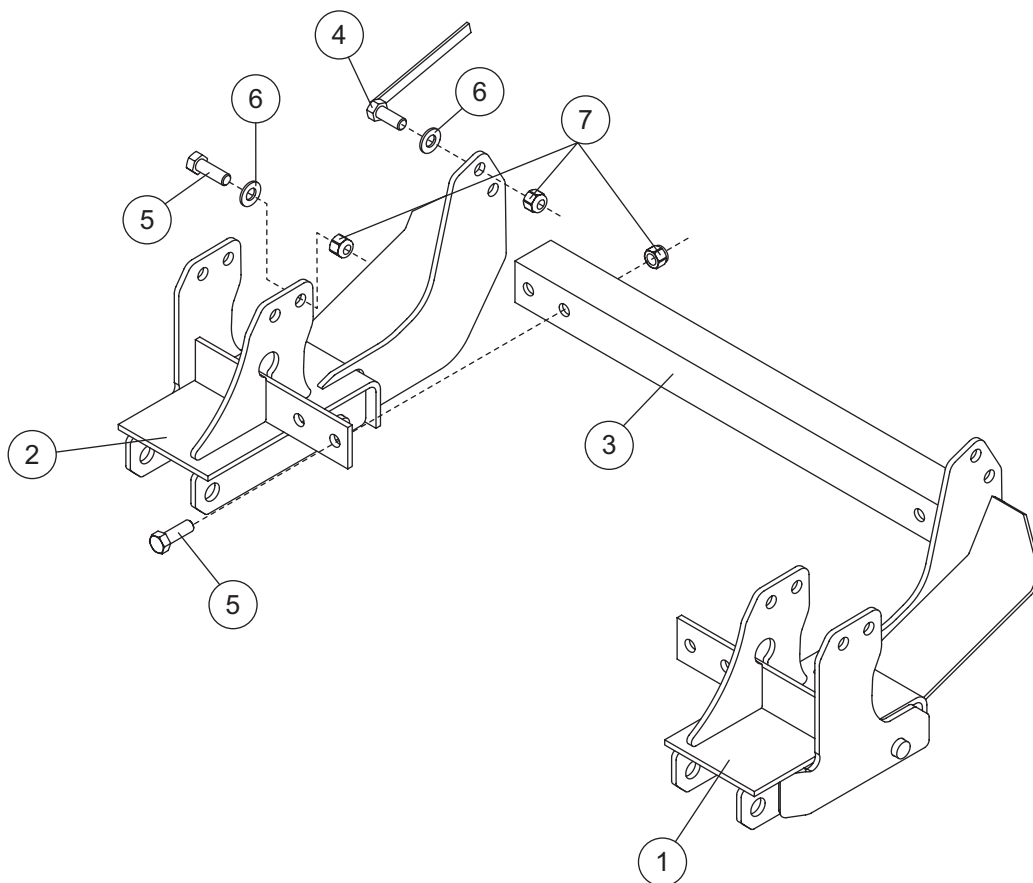


WESTERN PRODUCTS
P.O. BOX 245038
MILWAUKEE, WI 53224-9538
www.westernplows.com

dd A DIVISION OF DOUGLAS DYNAMICS, L.L.C.

31599 MOUNT KIT

GM K1500 All New Silv/Sierra
2007 - —



* The Receiver Kit is packaged separately. Items in this kit are not included in the Mount Assembly Box.

PARTS LIST – MODEL 31599

31599 GM MOUNT ASSY							
Item	Part	Qty	Description	Item	Part	Qty	Description
1	29434	1	MOUNT DS	4	21316	4	1/2-13X1-1/4 HX CS G5 W/HNDL
2	29436	1	MOUNT PS	ns	29438	1	BOLT BAG
3	67774	1	BAR, CROSS WITH NAME PLATE				
29438 BOLT BAG							
5	90210	6	HEXCAPSCREW_1/2-13X1-1/2 G5	7	91335	10	HEXLOCKNUT_1/2-13 GB TOPRING
6	90572	6	1/2 HARDENED FLAT WASHER				
ns = not shown				G = grade			

ITEM 10 67859 PASSENGER-SIDE RECEIVER KIT *							
Item	Part	Qty	Description	Item	Part	Qty	Description
12		1	RECEIVER, PS	14	91965K	1	HAIRPIN COTTER 5/32"
13	67665	1	PIN, RECEIVER				

ITEM 11 67858 DRIVER-SIDE RECEIVER KIT *							
Item	Part	Qty	Description	Item	Part	Qty	Description
15		1	RECEIVER, DS	14	91965K	1	HAIRPIN COTTER 5/32"
13	67665	1	PIN, RECEIVER				

* The Receiver Kit is packaged separately. Items in this kit are not included in the Mount Assembly Box.

Copyright © 2006 Douglas Dynamics, L.L.C. All rights reserved. This material may not be reproduced or copied, in whole or in part, in any printed, mechanical, electronic, film or other distribution and storage media, without the written consent of Western Products. Authorization to photocopy items for internal or personal use by Western Products outlets or snowplow owner is granted.

Western Products reserves the right under its product improvement policy to change construction or design details and furnish equipment when so altered without reference to illustrations or specifications used. Western Products or the vehicle manufacturer may require or recommend optional equipment for snow removal. Do not exceed vehicle ratings with a snowplow. Western Products offers a limited warranty for all snowplows and accessories. See separately printed page for this important information. The following are registered (®) or unregistered (™) trademarks of Douglas Dynamics, L.L.C.: UltraMount®, WESTERN®.