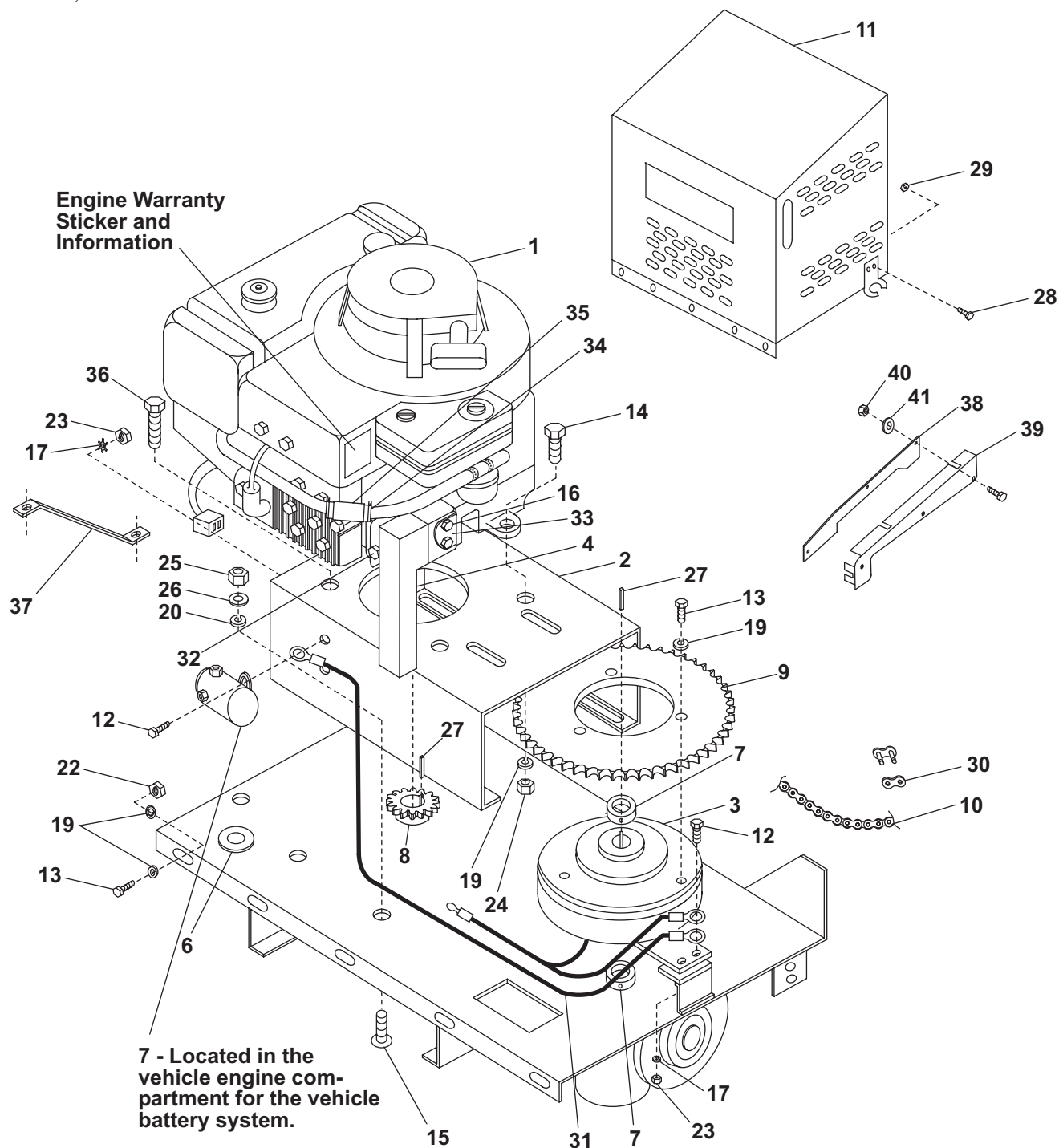




Tecumseh Engine Drive Regular Capacity - Parts List

WESTERN PRODUCTS
7777 North 73RD Street
P.O. Box 245038
Milwaukee, Wisconsin 53224-9538

April 1, 2000
Lit. No. 68957



This parts list is for WESTERN® Hopper Spreaders with serial numbers
4583 and higher.

- over -

Tecumseh Engine Drive - Regular Capacity - Parts List

Tecumseh Engine Drive – Regular Capacity – Parts List							
Item	Part	Qty	Description	Item	Part	Qty	Description
1	68805	1	10 Horsepower Engine	21	91099	10	5/16" Plain Washer Stainless Steel
2	65356	1	Engine Mount Regular Capacity	22	91350	4	5/16"-18 Hex Locknut Stainless Steel
3	65212	1	Electric Clutch	23	91411	3	1/4"-20 Hex Nut Zinc Plated
4	68855	1	Muffler Weldment	23	91429	3	1/4"-20 Hex Nut Stainless Steel
5	65357	1	Relay – Hopper Spreader	24	91412	4	5/16"-18 Hex Nut Zinc Plated
6	65216	1	Rubber Grommet, 1"	24	91430	4	5/16"-18 Hex Nut Stainless Steel
7	65211	2	Locking Collar, 1"	25	91413	6	3/8"-16 Hex Nut Zinc Plated
8	65214	1	Sprocket, #40 x 12T x 1" ID	25	91431	6	3/8"-16 Hex Nut Stainless Steel
9	65209	1	Sprocket, Clutch - #40 x 52T	26	91103	4	3/8" Plain Washer Zinc Plated
10	68350	1	#40 Roller Chain, 29.5" Long	26	91123	4	3/8" Plain Washer Stainless Steel
11	68372	1	Engine Cover Regular Capacity Mild Steel	27	65174	2	Machine Key, 1/4" Square x 1-1/2"
11	68501	1	Engine Cover Regular Capacity Stainless Steel	28	67092	4	#10-24 x 1/2" Socket Button Head Cap Screw Stainless Steel
12	90002	6	1/4"-20 x 3/4" Hex Cap Screw Zinc Plated	29	91330	4	#10-24 Hex Locknut Stainless Steel
12	90381	9	1/4"-20 x 3/4" Hex Cap Screw Stainless Steel	30	92980	1	#40 Roller Chain Master Link
13	93162	7	5/16"-18 x 3/4" Hex Cap Screw Stainless Steel	31	67241	1	Clutch Ground Cable
14	90022	3	5/16"-18 x 1-1/2" Hex Cap Screw Zinc Plated	32	68848	1	Muffler Bolt
15	90201	4	3/8"-16 x 1" Carriage Bolt Zinc Plated	33	68847	1	Muffler Bolt Retainer
15	90375	6	3/8"-16 x 1" Carriage Bolt Stainless Steel	34	68862	2	Clamp
16	68846	2	Muffler Bolt	35	68861	1	Inline Fuel Filter
17	91262	3	1/4" External Tooth Lock Washer Zinc Plated	36	90024	1	5/16"-18 x 2" Hex Cap Screw Zinc Plated
17	67083	3	1/4" External Tooth Lock Washer Stainless Steel	37	68854	1	Engine Mount Brace
18	91201	3	1/4" Lock Washer Zinc Plated	38	94522	1	Engine Cover Baffle
18	91281	3	1/4" Lock Washer Stainless Steel	39	94532	1	Engine Cover Baffle Extension
19	91276	6	5/16" Lock Washer Stainless Steel	40	67076	6	1/4"-20 Hex Locknut Stainless Steel
20	91203	6	3/8" Lock Washer Zinc Plated	41	91122	6	1/4" Plain Washer Stainless Steel
20	91282	6	3/8" Lock Washer Stainless Steel				

Copyright© 2000 Douglas Dynamics, L.L.C. All rights reserved. This material may not be reproduced or copied, in whole or in part, in any printed, mechanical, electronic, film or other distribution and storage media, without the written consent of Western Products. Authorization to photocopy items for internal or personal use by Western Products outlets is granted.

Western Products reserves the right under its product improvement policy to change construction or design details and furnish equipment when so altered without reference to illustrations or specifications used herein. Western Products and the vehicle manufacturer may require and/or recommend optional equipment for hopper spreaders. Western Products offers a limited warranty for all hopper spreaders and accessories. See separately printed page for this important information. The following is a registered® trademark of Douglas Dynamics, L.L.C.: WESTERN®.

Printed in USA

April 1, 2000

2

Lit. No. 68957