



WESTERN PRODUCTS
7777 NORTH 73RD STREET
P.O. BOX 23045
MILWAUKEE, WISCONSIN 53223



A DIVISION OF DOUGLAS DYNAMICS, INC.

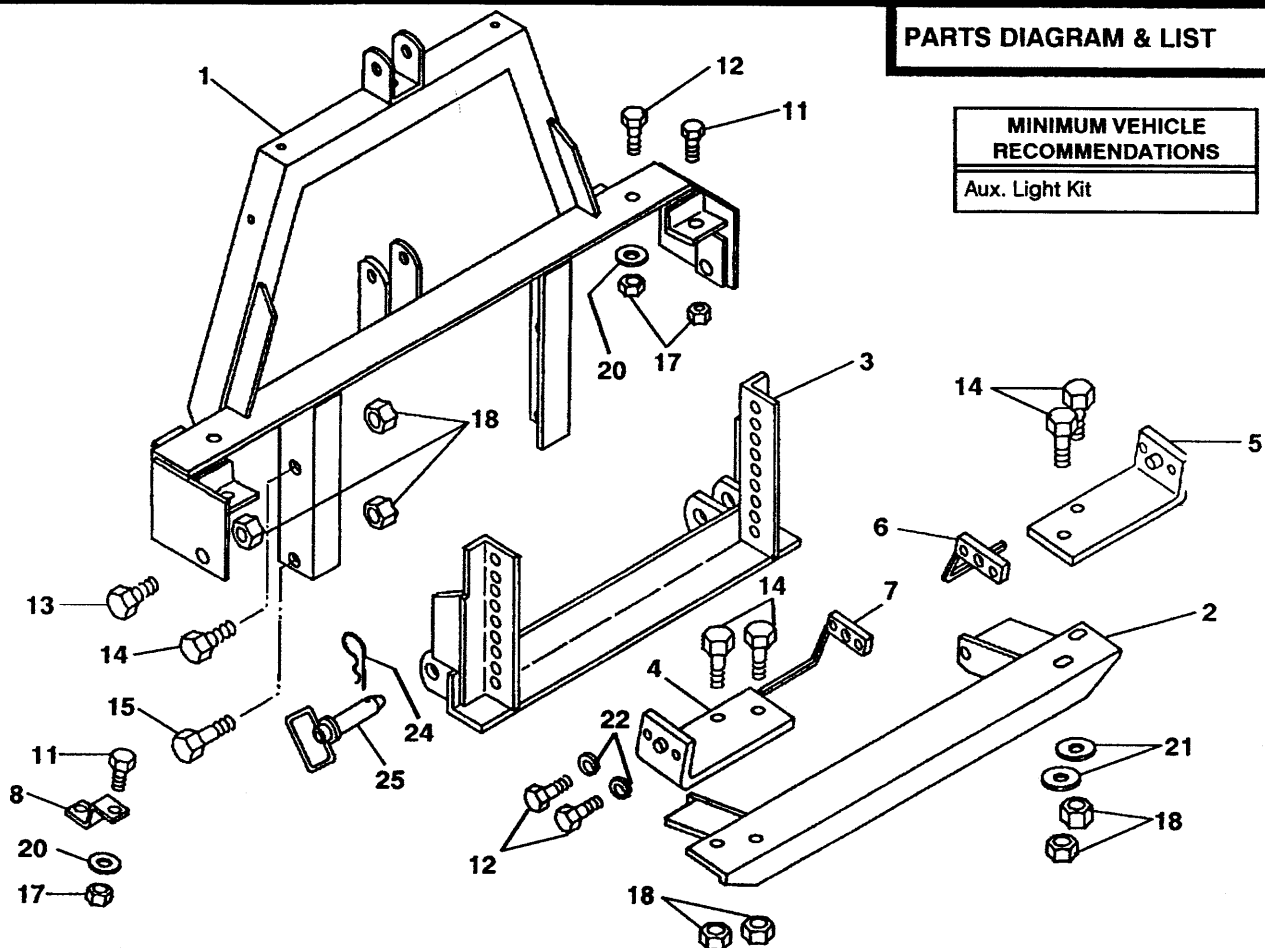
Box No. 61510
Model No. 1560
Chev/GMC 3500 HD
1991 & Later

December 17, 1991

PARTS DIAGRAM & LIST

MINIMUM VEHICLE RECOMMENDATIONS

Aux. Light Kit



ITEM	PART NO.	QUAN.	DESCRIPTION
1	61500	1	LIFT FRAME 1560
2	61495	1	THRUST FRAME
3	59595	1	SPREADER
4	61496	1	MOUNT BAR DR
5	61497	1	MOUNT BAR CU
6	61517	1	NUT BAR CU
7	61518	1	NUT BAR DR
8	61488	4	BUMPER BRACKET
11	90099	6	1/2-13X1-1/4 HX CS G5 ZP
12	90100	6	1/2-13X1-1/2 HX CS G5 ZP
13	90128	2	5/8-11x1-3/4 HX CS G5 ZP
14	90129	6	5/8-11X2 HX CS G5 ZP
15	90130	2	5/8-11X2-1/4 HX CS G5 ZP
17	91335	8	1/2-13 PT HX LK NUT NYIS ZP
18	91337	10	5/8-11 PT HX LK NUT NYIS ZP
20	91105	6	1/2 PLAIN WASHER TY A STD ZP
21	91106	2	5/8 PLAIN WASHER TY A STD ZP
22	91205	4	1/2 SP LK WASHER ZP
24	91965K	2	HAIRPIN COTTER 5/32"
25	93028K	2	HITCH PIN 1" X 3-1/2"

Abbreviations

CS	Capscrew
CU	Curb Side
DR	Driver Side
G	Grade
HX	Hex
LK	Lock
NYIS	Nylon Insert
PT	Prevailing Torque
SP	Spring
STD	Standard
TY	Type
ZP	Zinc Plated

NOT SHOWN

55930

1

BATTERY CABLE ADAPTOR

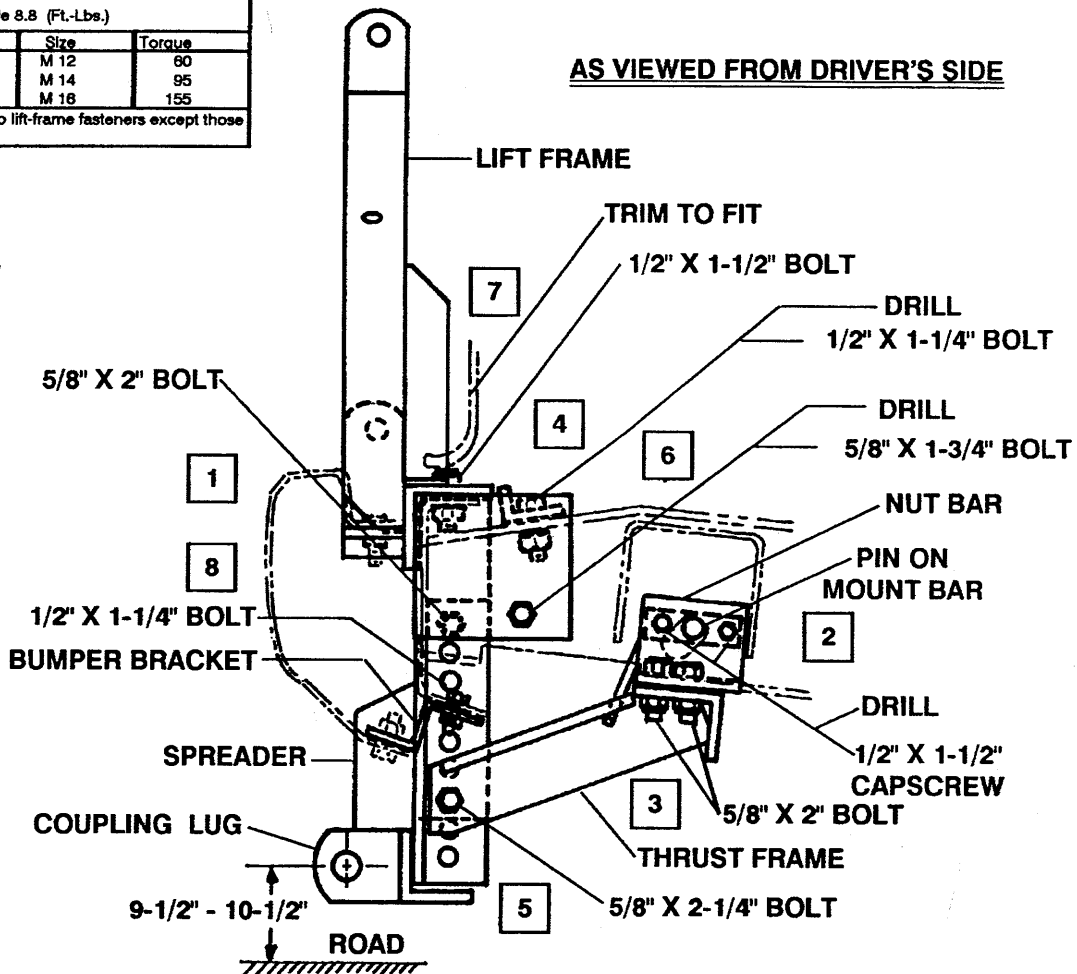
Recommended Fastener Torque Chart (Ft.-Lbs.)				
Size	SAE Grade 2	SAE Grade 5	SAE Grade 8	
1/4-20	6	9	13	
5/16-18	11	18	28	
3/8-16	19	31	48	
3/8-24	24	48	68	
7/16-14	30	50	75	
1/2-13	45	75	115	
9/16-12	66	110	165	
5/8-11	93	150	225	
3/4-10	150	250	370	
7/8-9	202	378	591	
1-8	300	583	893	
Metric Grade 8.8 (Ft.-Lbs.)				
Size	Torque	Size	Torque	
M 6	7	M 12	60	
M 8	17	M 14	95	
M 10	35	M 16	155	
These torque values apply to lift-frame fasteners except those noted in the instruction.				

Box No. 61510
Model No. 1560
Chev/GMC 3500 HD
1991 & Later

April 8, 1991

INSTALLATION INSTRUCTIONS

NOTE; DIRECT HYDRA-TURN® HOSES AND FITTINGS AWAY FROM STOPS AND PINCH POINTS



IMPORTANT: Read instructions before assembling. Bolts should be finger tight until the installation is completed. Preventive maintenance can prevent accidents. Use standard methods and practices when attaching snowplow including wearing safety glasses during drilling.

LIFT ASSEMBLY:

1. Remove grill and bumper from vehicle.
2. Insert mount bar pins (driver and curb side) into diagonal slots in outboard sides of vehicle frame below front body mounts. Hold mount bars tight to bottom and side of frame and drill two 1/2" holes thru each frame rail using the mount bars as a template. Remove mount bars and redrill holes to 17/32" (.531). Replace mount bars and secure to nut bars (inserted into frame thru bottom opening behind spring shackle and piloted on mount bar pin) with 1/2" x 1-1/2" capscrews and lock washers.
3. Attach thrust frame to mount bars with 5/8" x 2" bolts, flat washers to slots, and locknuts.
4. Install lift frame to top of vehicle frame horns and align base angle holes to bumper mounting holes. Fasten with 1/2" x 1-1/2" bolts, flat washers to slots, and locknuts. Use hole in short angle welded to side plate of lift frame as a template to drill a 1/2" hole into each vehicle frame rail. Fasten with 1/2" x 1-1/4" bolts and locknuts.
5. Position spreader between lift frame hanger angles and thrust frame legs, keeping coupling lug holes 9-1/2" to 10-1/2" from road. Secure using 5/8" x 2-1/4" bolts and locknuts in lower holes and 5/8" x 2" bolts and locknuts in upper holes.

TIGHTEN ALL BOLTS TO CORRESPONDING TORQUE CHART VALUES.

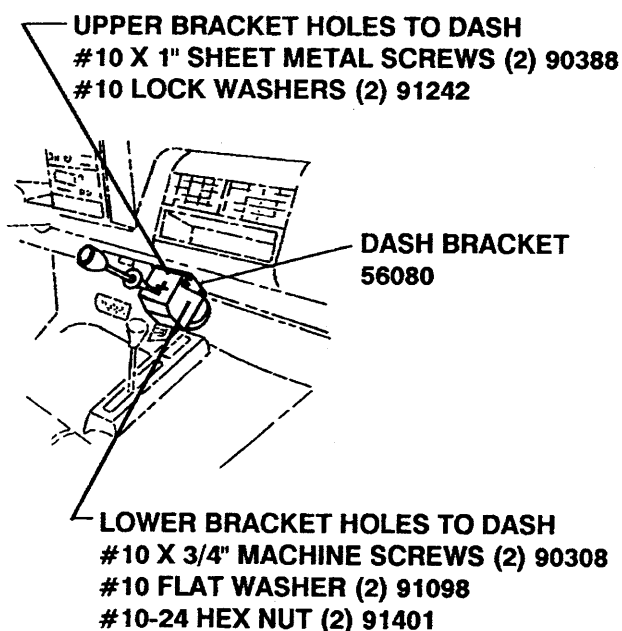
Continued on Page 3

6. Use hole in side plate of lift frame as a template to drill a 5/8" hole in each vehicle frame rail. Fasten with 5/8" x 1-3/4" bolts and locknuts. Tighten to corresponding torque chart value.
7. Replace grill. Notch plastic shield on bottom of grill to accept gussets on back side of lift frame.
8. Attach furnished bumper brackets to original bumper holes in bottom of frame horns and diagonal bumper braces with 1/2" x 1-1/4" bolts, flat washers to slots, and locknuts. Attach bumper to tabs on lift frame and furnished bumper brackets using existing bumper fasteners. Align bumper and tighten fasteners.

HYDRAULICS: Mount Hydraulic System using the instructions furnished in the Hydraulics Carton and on the envelope furnished in the bolt bag in this carton. **ISARMATIC® MOTOR GROUND CABLE MUST BE GROUNDED TO A CAPSCREW ON THE ENGINE.**

LIGHT KIT ASSEMBLY — Do NOT change flasher. FOR DUAL TYPE 2B HEADLAMPS — Use Box No. 60740 Headlamp Kit - 4 Wire and Box No. 60745 Harness Bracket Kit - 2B/2D.

INSTALLATION INSTRUCTIONS FOR — CAB CONTROL TO VEHICLE INSTRUMENT PANEL CHEVROLET & GMC



1. Remove the center (air vent) section of the dash, located between the radio/climate control and the glove compartment. Pry out at the bottom, then press in at the top while pulling down and out at the bottom. Disconnect any electrical equipment attached to the panel.
2. Secure the dash bracket to the Illa control using four (4) No. 8 x 5/8" hex head screws.
3. Locate Illa control to the right of the ash tray, and up to the bevel on the flat recessed surface. The bracket should fit fairly flat against the surface of the dash. Verify that Illa control lever will clear vehicle components in all positions and for adequate drill clearance (look into opening, to locate ribs) before drilling holes.
4. Mark this location.
5. Remove the bracket from the Illa control. Place the bracket in the selected location and mark all four (4) holes.
6. Drill 7/32" holes in the dash for the lower two holes, and 1/8" for the upper two holes, to align to the holes in the bracket. Secure using No. 10 x 3/4" machine screws, flat washers, and nuts (furnished in this carton) in the lower holes, and No. 10 x 1" sheet metal screws and lock washers (furnished in hydraulics carton) in the upper holes.
7. Place Illa control into bracket and fasten in desired position.
8. Replace the dash section.

17029

SPECIAL INSTRUCTIONS

Chevrolet and GMC

ENGINE OVERHEATING

In the event vehicle engine overheating occurs while traveling with the blade attached, the CLUTCH FAN ASSEMBLY should be checked by a General Motors Dealer's Service Department per Chevrolet Service Bulletin 6B.

HAZARD WARNING CIRCUIT

Snowplow auxiliary Park/Turn Hazard Lights can overload the vehicle electrical circuit when Hazard Lights flash for extended periods or when foot brake is activated with Hazard Lights flashing.

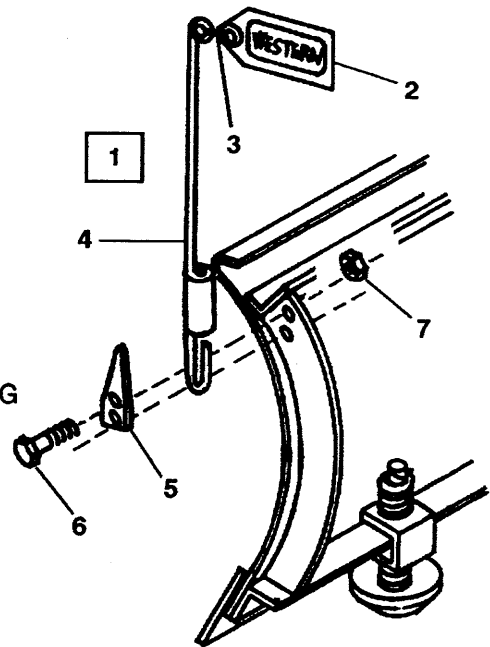
GM recommends that a light harness and relays be installed for auxiliary snowplow lighting. See your GM dealer for service bulletin # 90-8A-20. Western also offers a Directional Harness Kit, see Service Bulletin SP 619.

INSTALLATION INSTRUCTIONS FOR 59700 BLADE GUIDE ASSEMBLY

Insert pointed end of clamp into coil of blade guide rod. Attach a blade guide rod to each outer rib using 5/16" x 1" capscrews and locknuts as shown in diagram.

PARTS LIST 59700 — BLADE GUIDE ASSEMBLY

Item	Part No.	Quan.	Description
1	59697	2	BLADE GUIDE ROD, S-HOOK & FLAG
2	59694K	1	BLADE GUIDE FLAG
3	59696	1	S-HOOK
4	59691	1	BLADE GUIDE ROD
5	59946	2	CLAMP
6	90020	4	5/16-18X1 HX CS G2 ZP
7	91332	4	5/16-18 PT HX LK NUT NYIS ZP



13009-8808

The following are registered® and unregistered™ Trade Marks of Douglas Dynamics, Inc.
WESTERN® ISARMATIC® Hydra-Turn® UniMount® Roll-Action™ PRO-GUARD™

Western reserves the right under its Product Improvement Policy to change construction details and furnish equipment when so altered without reference to illustrations or specifications used herein.