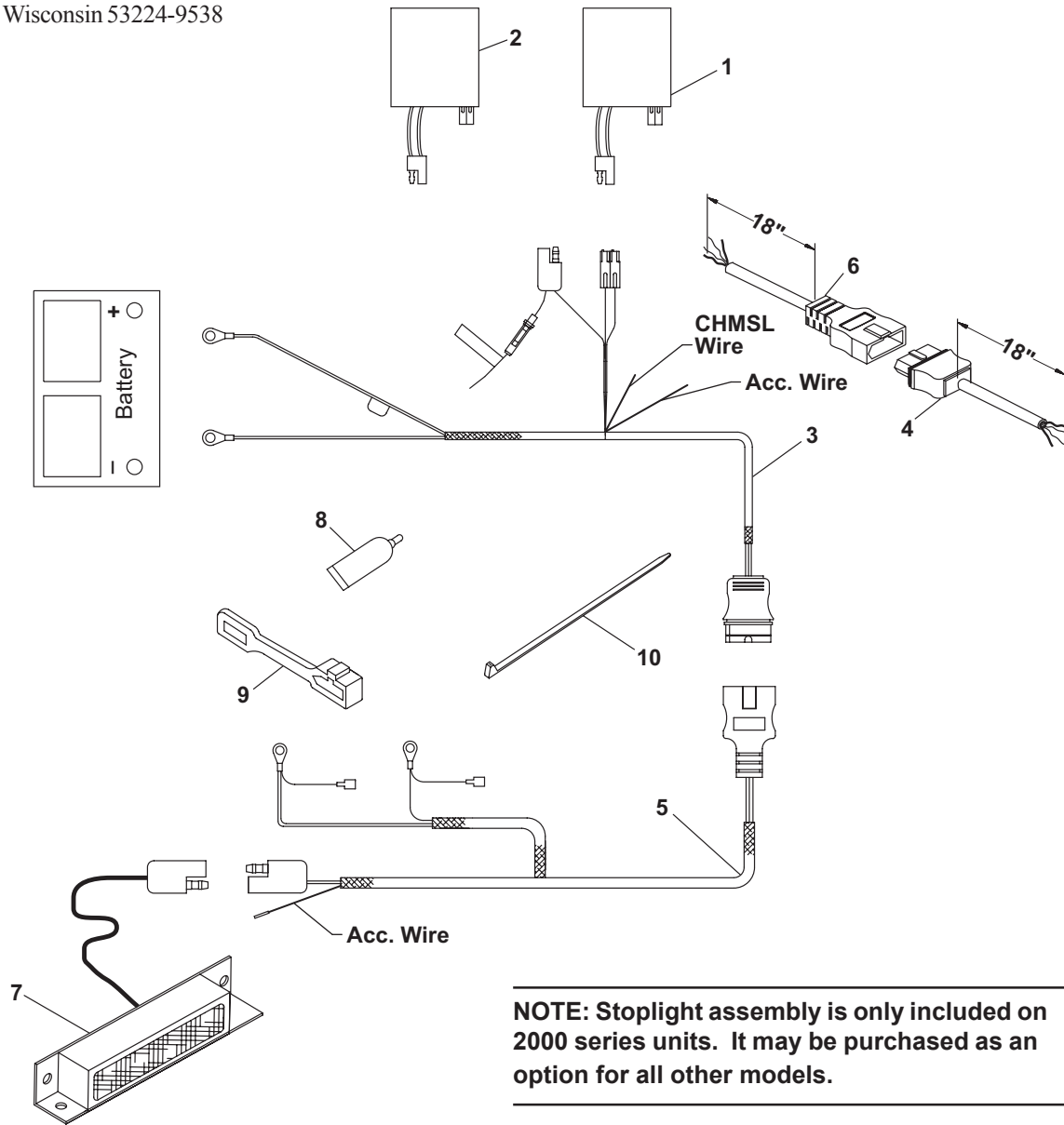




# 1000 and 2000 Series Electrical Components Parts List

WESTERN PRODUCTS  
 P.O. Box 245038  
 Milwaukee, Wisconsin 53224-9538

June 1, 2005  
 Lit. No. 94428, Rev. 06

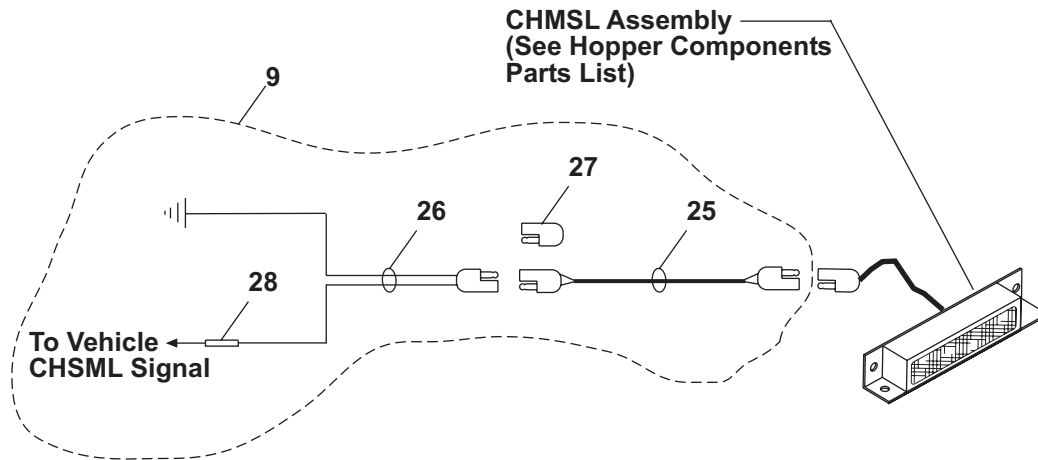
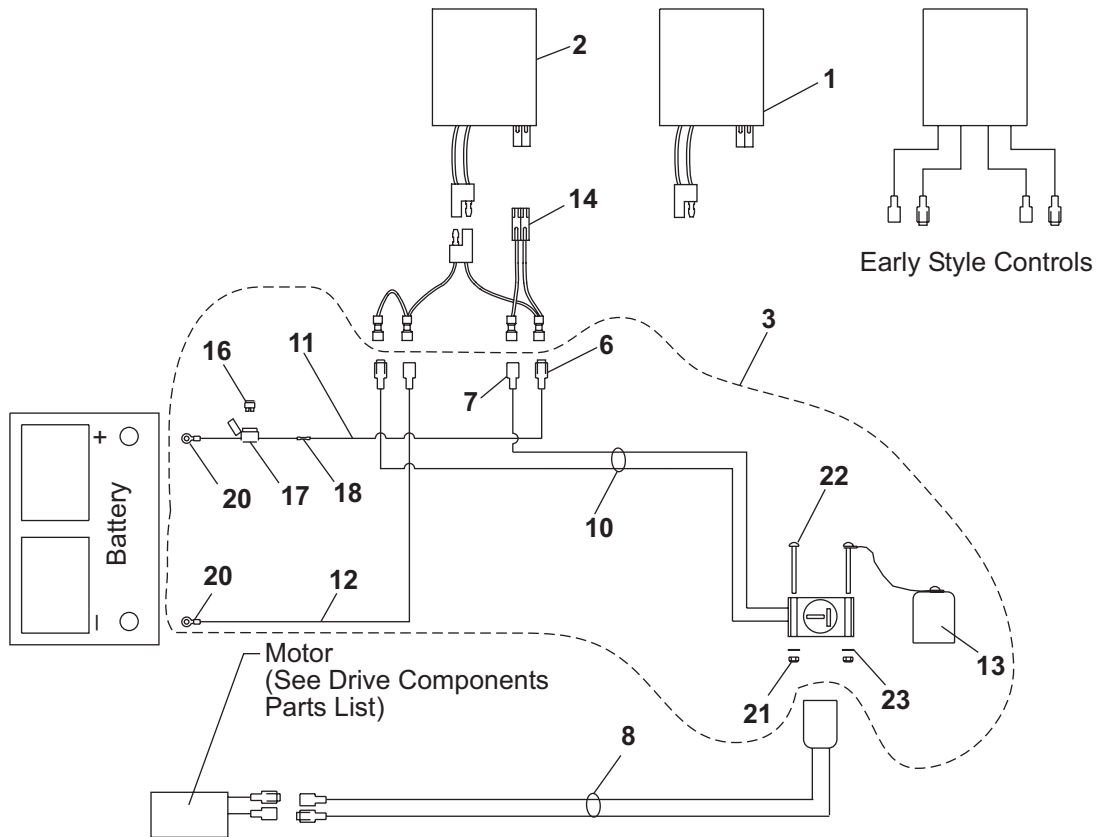


**NOTE:** Stoplight assembly is only included on 2000 series units. It may be purchased as an option for all other models.

1000 and 2000 Series Electrical Components							
Item	Part	Qty	Description	Item	Part	Qty	Description
1	67070	1	ON/OFF Control	5	63634	1	Harness, Spreader – 4 Pin
2	28866	1	Variable Speed (PWM) Control	6	63693	1	Harness, Spreader End Kit – 3 or 4 Pin
3	63633	1	Harness, Vehicle – 4 Pin	7	65361	1	Center High Mount Stop Light Assembly
4	63692	1	Harness, Vehicle End Kit – 3 or 4 Pin	NS	65514	1	Parts Bag
<b>65514 Parts Bag</b>							
8	56099	1	Dielectric Grease Tube	10	61536	12	Cable Tie - Long
9	61548K	1	Plug Cover				
NS = Not Shown							

This parts list is for WESTERN® Low Profile Spreaders with serial numbers 21601 (2000 Series) and 12201 (1000 Series) and higher.

# 1000 and 2000 Series Electrical Components Parts List



**NOTE:** Stoplight assembly is only included on 2000 series units. It may be purchased as an option for all other models.

This parts list is for WESTERN® Low Profile Spreaders with serial numbers 20364-21600 (2000 Series) and 10003-12200 (1000 Series).

## 1000 and 2000 Series Electrical Components Parts List

1000 and 2000 Series Electrical Components							
Item	Part	Qty	Description	Item	Part	Qty	Description
1	67070	1	ON/OFF Control	7	M1459*	1	1/4" Insulated Receptacle
2	28866	1	Variable Speed (PWM) Control	8	P2156	1	Spreader Cord 2 wire x 7 ft.
3	P3165	1	Control Wiring Kit (See list below.)	9	68794	1	CHMSL Wiring Kit (See list below.)
6	M1458*	1	1/4" Blade Terminal				
* Available as a service parts kit only (5 pieces per package).							

Item 3 P3165 1000 and 2000 Series Control Wiring Kit							
Item	Part	Qty	Description	Item	Part	Qty	Description
10	P2157	1	Control Harness 2 wire x 23 ft.	13	P2545	1	Plug Cap Assembly
11	P2158	1	Control Power Lead – Red	14	66413	1	Adapter Harness
12	P2159	1	Control Ground Lead – Black	NS	P3166	1	Parts Bag
P3166 Parts Bag							
16	68658	1	Fuse 30 Amp Blade Style	22	68667*	2	#10-32 x 2 Machine Screw
17	68659	1	Fuse Holder – 10 Ga.	23	68668*	2	3/16 Plain Washer
18	68656	1	Butt Splice 10-12 Ga.	NS	68669*	2	#10 x 1/2 Sheet Metal Screw
20	68646	2	5/16 Ring Terminal 10-12 Ga.	NS	61536	10	Cable Tie - Long
21	M2007*	2	#10-32 Locknut	NS	66130	1	Rubber Grommet 3/8 ID
* Available as a service parts kit only (5 pieces per package).							NS = Not Shown

Item 9 68794 2000 Series CHMSL Wiring Kit (Not included on 1000 series units.)							
Item	Part	Qty	Description	Item	Part	Qty	Description
25	68788	1	Stoplight Extension Cord	28	61592	1	Butt Splice
26	65363	1	Stoplight Vehicle Harness	NS	59223	10	Cable Tie
27	65364	1	Protective Plug	NS	56099	1	Dielectric Grease Tube
NS = Not Shown							

---

Copyright © 2005 Douglas Dynamics, L.L.C. All rights reserved. This material may not be reproduced or copied, in whole or in part, in any printed, mechanical, electronic, film or other distribution and storage media, without the written consent of Western Products. Authorization to photocopy items for internal or personal use by Western Products outlets or spreader owner is granted.

Western Products reserves the right under its product improvement policy to change construction or design details and furnish equipment when so altered without reference to illustrations or specifications used. Western Products and the vehicle manufacturer may require and/or recommend optional equipment for spreaders. Do not exceed vehicle ratings with a spreader. Western Products offers a limited warranty for all spreaders and accessories. See separately printed page for this important information. The following is a registered (®) trademark of Douglas Dynamics, L.L.C.: WESTERN®.