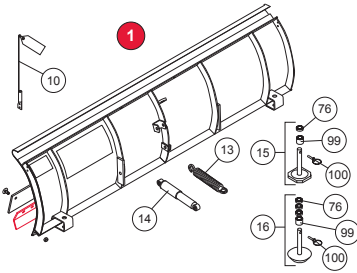
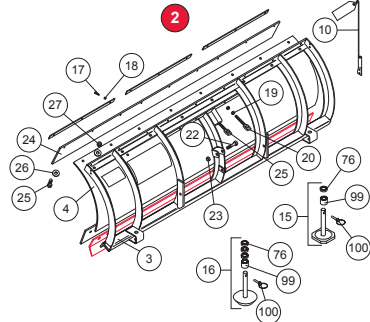


BLADES

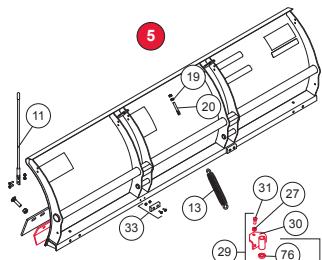
STEEL



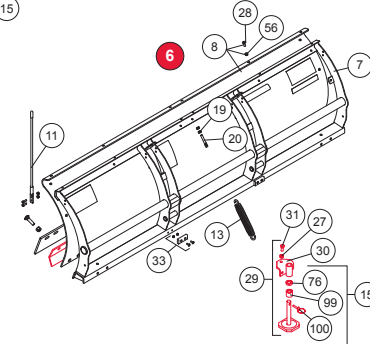
POLY



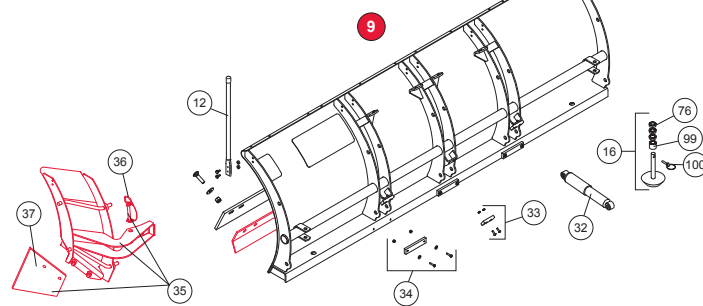
STEEL MIDWEIGHT™



POLY MIDWEIGHT



PRO PLUS®



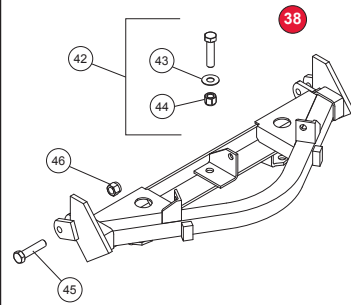
** Red outlined parts are optional accessories. **



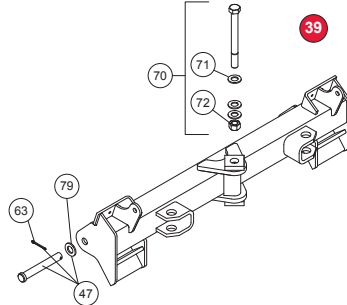
INTERACTIVE PARTS POSTER AVAILABLE AT WWW.WESTERNPLOWS.COM

QUADRANTS

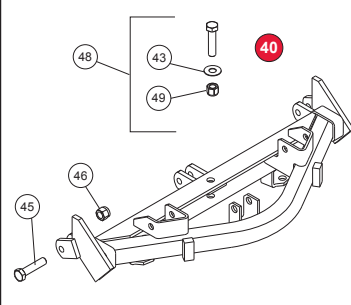
STANDARD



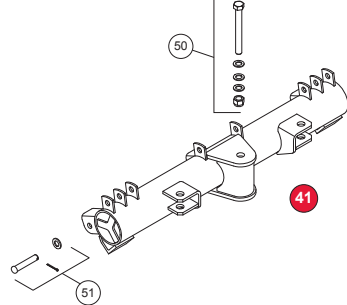
MIDWEIGHT



PRO-PLOW®

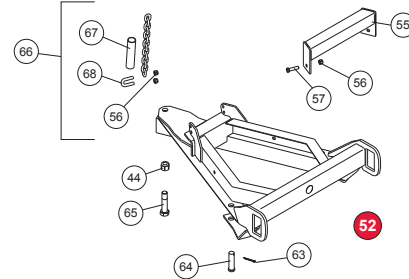


PRO PLUS

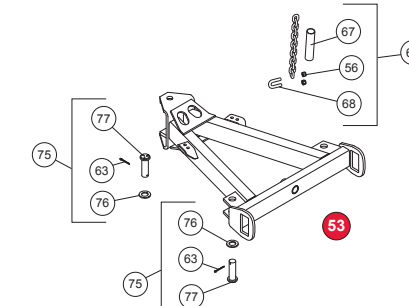


A-FRAMES

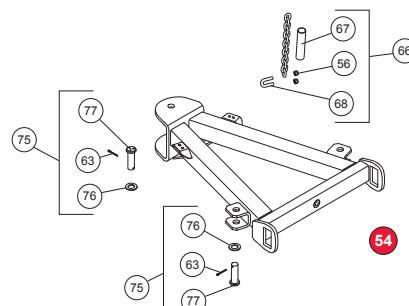
STANDARD & PRO-PLOW



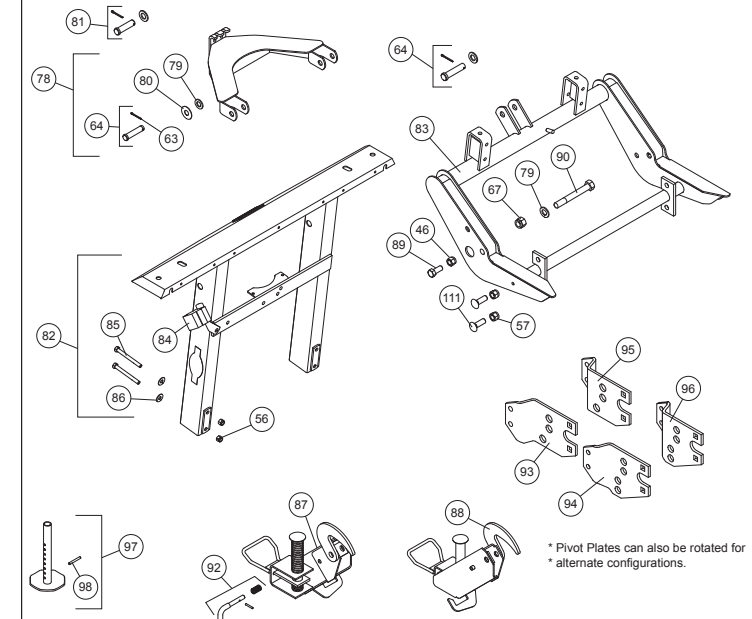
MIDWEIGHT



PRO PLUS



LIFT FRAME ASSEMBLIES



* Pivot Plates can also be rotated for alternate configurations.

PARTS LIST

Item	Part	Description	Item	Part	Description
1	60381	7-1/2" Standard Blade Assy	46	91337	5/8"-11 Hex Locknut GB
	60390	8" PRO-PLOW Blade Assy	47	28593	3/4" x 5-3/8" Clevis Pin Kit
	60308	8-1/2" PRO-PLOW Blade Assy	48	67856	Nose Plate Bolt Kit
	---	9" PRO-PLOW Blade Assy	49	63574	3/4"-10 Hex Flange Locknut GF
2	62400	7-1/2" POLY Standard Blade Assy w/Deflector	50	63978	Pivot Bolt Kit
	62450	8" POLY PRO-PLOW Blade Assy w/Deflector	51	95335	3/4" x 4" Clevis Pin Kit
3	62111	7-1/2" Poly Standard Blade Frame	52	66888	A-Frame (S and SY)
	62350	7-1/2" POLY PRO-PLOW Blade Frame		67854	A-Frame (P and PY)
	62415	8" POLY PRO-PLOW Blade Frame	53	28592	A-Frame (M)
4	49313	7-1/2" Poly Standard Moldboard	54	66920	A-Frame (PP)
	49322	7-1/2" POLY PRO-PLOW Moldboard	55	67676	Stacking Stop
	49327	8" POLY PRO-PLOW Moldboard	56	91333	3/8"-16 Hex Locknut GB
5	64340	7-1/2" MIDWEIGHT Blade Assy	57	66456	3/8"-16 x 1-1/4" Hex Cap Screw G5
6	64330	7-1/2" Poly MIDWEIGHT Blade Assy	58	67842	Pivot Bar Kit
7	64333	7-1/2" Poly MIDWEIGHT Blade Frame	59	67974	Pivot Pin DS
8	28597	7-1/2" Poly MIDWEIGHT Moldboard	60	67977	Pivot Pin PS
	64750	7-1/2" PRO PLUS Blade Assy	61	66812	Pivot Pin Kit
9	66980	8" PRO PLUS Blade Assy	62	67855	Pivot Bolt Kit
	66974	8-1/2" PRO PLUS Blade Assy	63	91911K	5/32" x 1-1/2" Cotter Pin
	66901	9" PRO PLUS Blade Assy	64	93063K	3/4" x 3-1/4" Clevis Pin Kit
10	59700	Blade Guide Assy	65	90161	3/4"-10 x 4" Hex Cap Screw G5
11	62265	Blade Guide Kit	66	49033	Replacement Chain Assy
12	62595	24" Commercial Blade Guides	67	65508	Plastic Tube
13	23039	Trip Spring	68	90571	3/8"-16 x 1-1/2" U-Bolt ZYC
14	60338	Shock Absorber	69	91340	1"-8 Hex Locknut GB
15	49067	Disc Shoe Assy (S, SY and M)	70	28590	Pivot Bolt Kit
16	49071	Disc Shoe Assy (P, PY and PP)	71	64375	7/8" Flat Washer
17	90048	5/16"-18 x 1-1/4" Hex Cap Screw G5	72	64363	7/8"-9 Hex Locknut GB
18	91332	5/16"-18 Hex Locknut GB	73	67748	1"-8 Hex Jam Nut G5
19	91416	5/8"-11 Hex Nut G5	74	67552	1"-8 x 7" Hex Cap Screw G5
20	90493K	5/8"-11 x 6" Eyebolt (Long)	75	63973	Ram Pin Kit
21	66421	5/8"-11 x 4" Eyebolt Kit	76	91192	Round Flat Washer - Special
22	66450	3/4"-10 x 3" Hex Cap Screw G5	77	93074	1" x 3-1/4" Clevis Pin G5 ZYC
23	91339	3/4"-10 Hex Jam Locknut GB	78	67850-1	Lift Arm Assy
	62311	Rubber Deflector (7-1/2" SY)	79	91147	3/4" Flat Washer
	62402	Rubber Deflector (8" PY)	80	67727	Round Flat Washer - Special
25	90210	1/2"-13 x 1-1/2" Hex Cap Screw G5	81	64617	3/4" x 3" Clevis Pin Kit
26	91105	1/2" Flat Washer	82	67853	Upper Lift Frame Assy
27	91335	1/2"-13 Hex Locknut GB	83	67903	Lower Lift Frame Assy (S, SY and M)
28	98043	3/8"-16 x 1" Button Cap Screw		67556-1	Lower Lift Frame Assy (P, PY and PP)
29	64392	Disc Shoe Kit	84	61246	Cable Boot
30	64388	Shoe Bracket	85	67764	3/8"-16 x 3-3/4" Hex Cap Screw G5
31	90575	1/2"-13 x 1-1/4" Hex Cap Screw G5	86	90315	3/8" Flat Washer
32	63979	Shock Absorber Kit	87	67845	Stand Assy DS
33	63976	Push Stop Kit	88	67846	Stand Assy PS
34	63977	Trip Stop Kit	89	90127	5/8"-11 x 1-1/2" Hex Cap Screw G5
	64410	PRO PLUS Blade Wing Kit (Pair)	90	66451	3/4"-10 x 6" Hex Cap Screw G5
	67922	PRO PLUS DS Blade Wing Kit	91	5572	5/8"-11 x 2" Carriage Bolt G5
	67923	PRO PLUS PS Blade Wing Kit	92	67844	Stand Lock Pin Kit
36	67921	5/8" x 4-3/4" Hitch Pin	93	64378	Pivot Plate A (M)
37	67919	PRO PLUS Blade Wing Cutting Edge	94	67707	Pivot Plate A (All other blades)
38	66887	Quadrant (S and SY)	95	64379	Pivot Plate B (M)
39	28591	Quadrant (M)	96	67708	Pivot Plate B (All other blades)
40	67848	Quadrant (P and PY)	97	67847	Stand Shoe Kit
41	66930	Quadrant (PP)	98	67635	1/4" x 2" Roll Pin BP
42	66889	Nose Plate Bolt Kit	99	60045	Spacer
43	63575	3/4" Hardened Flat Washer	100	93010K	7/16" x 1-3/4" Linch Pin (2 Pack)
44	91338	3/4"-10 Hex Locknut GB	101	67858	Receiver Kit DS
45	90132	5/8"-11 x 3" Hex Cap Screw G5	102	67859	Receiver Kit PS
			103	67665	Receiver Pin
			104	91965K	5/32" Hairpin Cotter



Western Products
PO Box 245038 • Milwaukee, WI 53224-9538
Use only genuine WESTERN® replacement parts.

Copyright © 2009 Douglas Dynamics, L.L.C. All rights reserved. This material may not be reproduced or copied, in whole or in part, in any printed, mechanical, electronic, film or other distribution and storage media, without the written consent of Western Products. Authorization to photocopy items for internal or personal use by Western Products outlets or snowplow owner is granted.

Western Products reserves the right under its product improvement policy to change construction or design details and furnish equipment when so altered without reference to illustrations or specifications used. Western Products or the vehicle manufacturer may require or recommend optional equipment for snow removal. Do not exceed vehicle ratings with a snowplow. Western Products offers a limited warranty for all snowplows and accessories. See separately printed page for this important information. The following are registered (®) or unregistered (™) trademarks of Douglas Dynamics, L.L.C.: MIDWEIGHT™, POLY PRO-PLOW®, PRO-PLOW®, PRO PLUS®, UltraMount®, WESTERN®.

Printed in U.S.A.

ACCESSORY BACK DRAG EDGES

Size	Model	Blade	Back Drag Edge	Bolt Kit (if required)
7-1/2"	All Blades		64758	64183
8"	PRO-PLOW (Steel & Poly) & PRO PLUS		66892	64183
8-1/2"	PRO-PLOW (Steel Only) & PRO PLUS		66999	64183
9"	PRO-PLOW (Steel Only) & PRO PLUS		66991	64183

CUTTING EDGES

Size	Model	Blade	Material Thickness	
			3/8"	1/2"
7-1/2"	Standard		49088	---
7-1/2"	Poly Standard		49312	---
7-1/2"	POLY PRO-PLOW		49312	49350
8"	POLY PRO-PLOW		49328	49351
7-1/2"	PRO-PLOW		49088	49346
8"	PRO-PLOW		49089	49347
8-1/2"	PRO-PLOW		49086	49348
9"	PRO-PLOW		49251	49349
7-1/2"	MIDWEIGHT (Steel or Poly)		28594	---
7-1/2"	PRO PLUS		---	64775
8"	PRO PLUS		---	63980
8-1/2"	PRO PLUS		---	63985
9"	PRO PLUS		---	63990

COMMON SYSTEM COMPONENTS

