



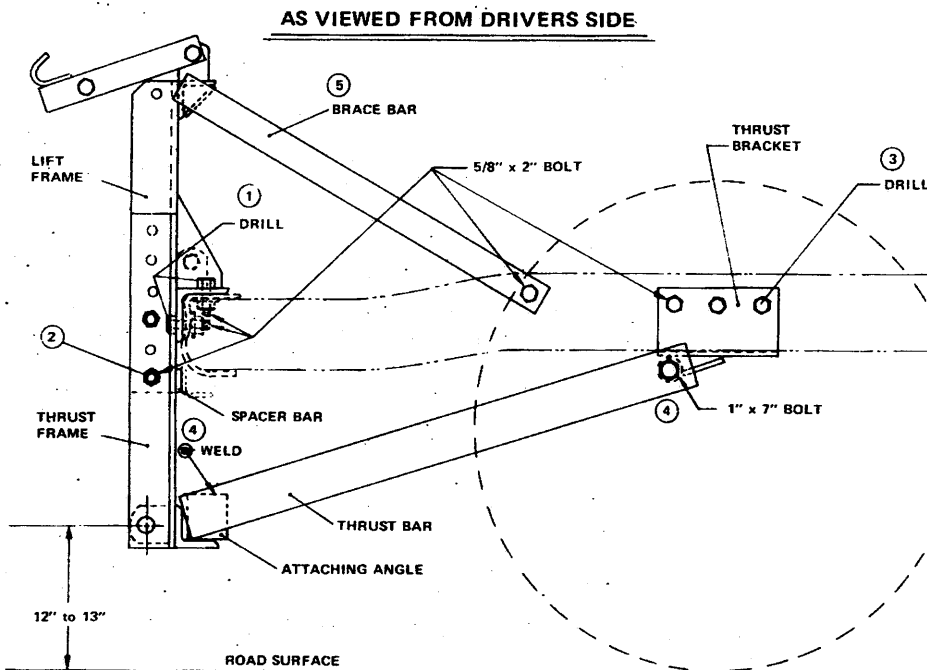
**WESTERN PRODUCTS**  
7777 NORTH 73RD STREET  
P.O. BOX 23045  
MILWAUKEE, WISCONSIN 53223



A DIVISION OF DOUGLAS DYNAMICS, INC.

Box No. 59714  
Model No. 2950  
Universal Heavyweight  
Front Frame  
Lift-Mount

## INSTALLATION INSTRUCTIONS



RECOMMENDED FASTENER TORQUE CHART				
SIZE	TORQUE IN FOOT POUNDS			
	GRADE 2	GRADE 5	GRADE 8	GRADE 9
1/4 - 20	6	9	13	
5/16 - 18	11	18	28	
3/8 - 16	19	31	46	
3/8 - 24	24	46	68	
7/16 - 14	30	50	75	
1/2 - 13	45	75	115	
9/16 - 12	66	110	165	
5/8 - 11	93	160	225	
3/4 - 10	150	250	370	
7/8 - 9	202	378	591	
1 - 8	300	583	893	

These torque values apply to lift-mount fasteners except those noted in the instructions where motion is desired.

### MINIMUM VEHICLE RECOMMENDATIONS

Aux. Light Kit  
H.D. Alternator  
H.D. Battery  
H.D. Suspension

**IMPORTANT:** Remember to use standard methods and practices when installing snowplows, including wearing safety glasses during drilling. Read instructions before installing. Proper maintenance can prevent accidents. Regularly inspect all components and repair or replace any worn, loose or damaged parts immediately. Bolts should not be tightened until the installation is completed to allow sufficient adjustment for aligning holes and locating parts to vehicle frame. Disconnect vehicle electrical system to protect wiring, alternator, etc., before welding.

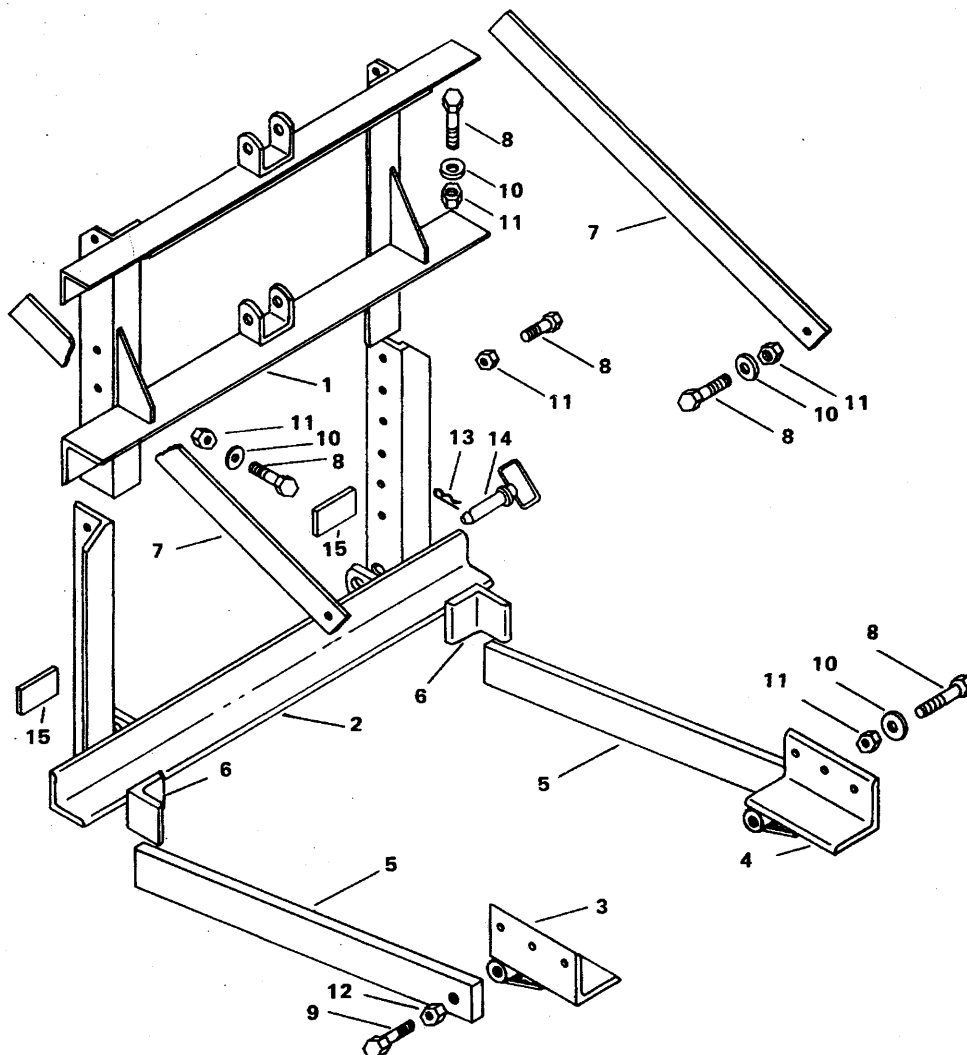
1. Attach the lift frame to the bumper. Whenever possible, drill 5/8" holes through the base angle of the lift, to align to existing holes in the bumper and/or frame. Four bolts through the top and two through the front are suggested. Fasten with furnished 5/8" x 2" bolts and locknuts. Use flatwashers as shims between the lift base angle and the bumper if the contour of the bumper causes excessive gaps. On flat bumpers weld furnished 3/8" spacer bar to vertical angle of lift at bottom of bumper.
2. Assemble the lower thrust frame to the lift frame. Align the holes in the angle and adjust to hold the 12" to 13" dimension from the road surface to the center of the A-frame coupling lug holes for "Heavy Weight" plow. Fasten with the furnished 5/8" x 2" bolts and locknuts. Bottom of lift side angles or top of thrust angles may be cut off if interference occurs.

### TIGHTEN ALL BOLTS TO CORRESPONDING TORQUE VALUES NOTED IN FASTENER TORQUE CHART.

3. Install the frame thrust brackets to the bottom and outside of the vehicle frame, choosing a location that is clear of frame brackets, to the rear of brake - gas - cooling lines or obstructions. Keep in mind that 3" wide thrust bars must clear axle, tie rods, and springs etc. Thrust brackets can also be attached with the coupling tube to the rear, the location can vary from side to side as required. The thrust bars may come from the inside or the outside of the brackets. Drill 3 - 5/8" holes per side; (**CAUTION!** Check inside of frame for brake or gasoline or wiring before drilling) and fasten with 5/8" x 2" bolts, flatwashers inside of frame and locknuts.
4. Align hole at top of thrust arm to tube of bracket. Mark and cut off excess at thrust frame end of bar. Attach to thrust bracket using 1" x 7" bolt and locknut. Clamp bottom of thrust arm to angle clips and angle clips to thrust frame cross angle. Weld these pieces together with 1/4" welds.
5. Top diagonal braces are furnished and should be installed to top of lift and vehicle frame. Top cross angle of lift may be cut for desired frame or radiator clearance when installing braces. Holes will have to be neatly cut into the grille or sheet metal to accomplish this. The farther back they are attached to the frame the more support they will give the lift. Drill 5/8" holes in the frame and fasten using 5/8" x 2" bolts and weld to top cross angle of lift.

Box No. 59714  
 Model No. 2950  
 Universal Heavyweight  
 Front Frame  
 Lift-Mount

# **DIAGRAM & PARTS LIST**



3015-8312

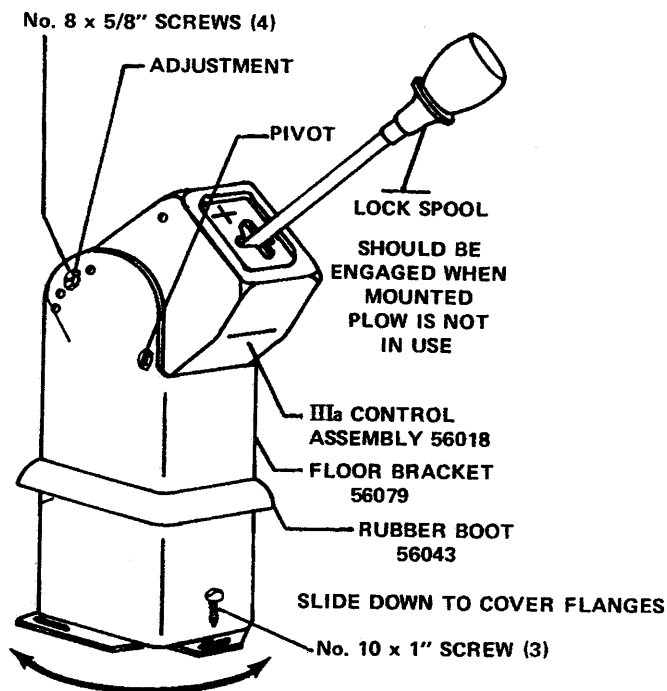
3016-8312

Item	Part No.	Quan.	Description
1	59715	1	Lift Frame Unit
2	53578	1	Thrust Frame Unit
3	59707	1	Thrust Bracket Unit – Driver Side
4	59708	1	Thrust Bracket Unit – Curb Side
5	59710	2	Thrust Bar
6	59731	2	Attaching Angle – Thrust Arm
7	59709	2	Brace Bar
8	90129	18	Capscrew – 5/8"-11 x 2" Long – Grade 5
9	90476	2	Hex Head Machine Bolt 1"-8 x 7" Long – Grade 2
10		18	Flat Washer – 5/8"
11	91337	18	Locknut – 5/8"-11 Nylon Insert Type
12	91340	2	Locknut – 1"-8 Nylon Insert Type
13	91965	2	Hairpin Cotter – 5/32" x 2-15/16" O/A Length
14	93028	2	Hitch Pin – 1" x 3-1/2" Long
15	59701	2	Spacer Bar

**NOTE:** Only those items indicated with a **Part Number** are available for service.

# **INSTALLATION INSTRUCTIONS FOR - IIIa CONTROL TO VEHICLE TRANSMISSION TUNNEL**

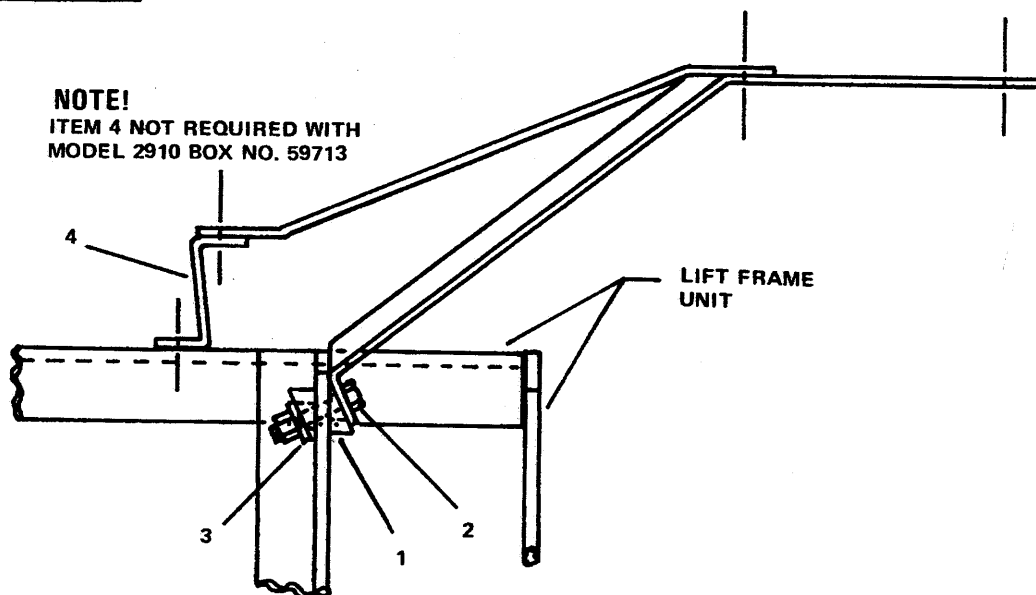
The IIIa Control should be placed in the vehicle so it is convenient to the operator without interfering with shift levers or the seat when it is fully forward. Use the bracket in the location you select as a locating template to drill three 9/64" diameter holes through the floorboard. These holes should be drilled in the center of the floor bracket slots, this will permit the bracket to be adjusted at the operators discretion. Fasten using No. 10 x 1" screws and lockwashers. Slide the rubber boot down to cover the flanges. Align forward holes of bracket and IIIa Control, place No. 8 x 5/8" long slotted hex head screws in these holes. Select best position for the IIIa Control and secure using two more of the same size screws after cable installation is completed.



BRACKET MAY BE ROTATED WITHIN SLOTS

## **LIGHT KIT SUPPLEMENT DIAGRAM - PARTS LIST INSTRUCTIONS**

3088-8003  
2948-7704



Item	Part No.	Quan.	Description
1	54565	4	Tube Spacer
2		2	Capscrew - 3/8"-16 x 2-1/4" Long
3		2	Flatwasher - 3/8"
4	59413	2	Light Bracket - Extension Bar

**NOTE:** Only those items indicated with a **Part Number** are available for Service.

Follow these instructions, together with Light Kit Instructions. Spacers and some bolts are furnished in Mount Bolt Bag, discard extra bolts from Light Kit.

1. Attach the lower end of the long bracket, placing a spacer between it and the lift side angle.
2. Insert 3/8" x 2-1/4" bolt and place another spacer inside of lift angle. Secure with flatwasher, lockwasher and hexnut.
3. Fasten short light bracket bar to top of extension bar with 3/8" x 1-1/4" bolt, lockwasher and hexnut. Weld or drill hole and attach extension bar to lift.

# **INSTALLATION INSTRUCTIONS FOR 59700 BLADE GUIDE ASSEMBLY**

The following instructions simply outline the attachment of this blade guide assembly.

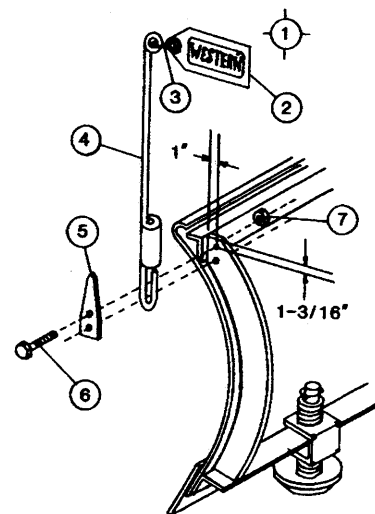
- Step 1. Lower blade to ground level.
- Step 2. If hole is not pre-drilled, drill one 11/32" hole, 1-3/16" down and 1" out on the outside rib of blade. See diagram below.
- Step 3. Insert pointed end of clamp into coil of guide. Attach guide to rib using top hole of clamp. Secure assembly using supplied 5/16" x 1" bolt and locknut. Tighten until guide will stand alone perpendicular to road surface.
- Step 4. If hole is not pre-drilled, use lower hole of clamp as locator, drill bottom hole 11/32".
- Step 5. Bolt lower hole in place. Finish securing top bolt.
- Step 6. Attach other side following above steps.

Pictorial view supplied below. Remember to use standard methods and practices in attaching blade guides including wearing safety glasses during drilling.

## **PARTS LIST**

### **59700 - BLADE GUIDE ASSEMBLY**

ITEM	PART NO.	QUAN.	DESCRIPTION
1	59697	2	Blade Guide Rod, S-Hook & Flag
2	59694	1	Flag
3	59696	1	S-Hook
4	59691	1	Blade Guide Rod
5	59946	2	Clamp
6		4	Capscrew 5/16 - 18 x 1 Gr 2
7		4	Locknut 5/16 - 18 Nylon Insert



3009-7911

The following are registered® or unregistered™ Trade Marks of Douglas Dynamics, Inc.  
**WESTERN® ISARMATIC® Hydra-Turn® Roll-Action™ SnowKing™**

Western reserves the right under its Product Improvement Policy to change construction or design details and furnish equipment when so altered without reference to illustrations or specifications used herein.