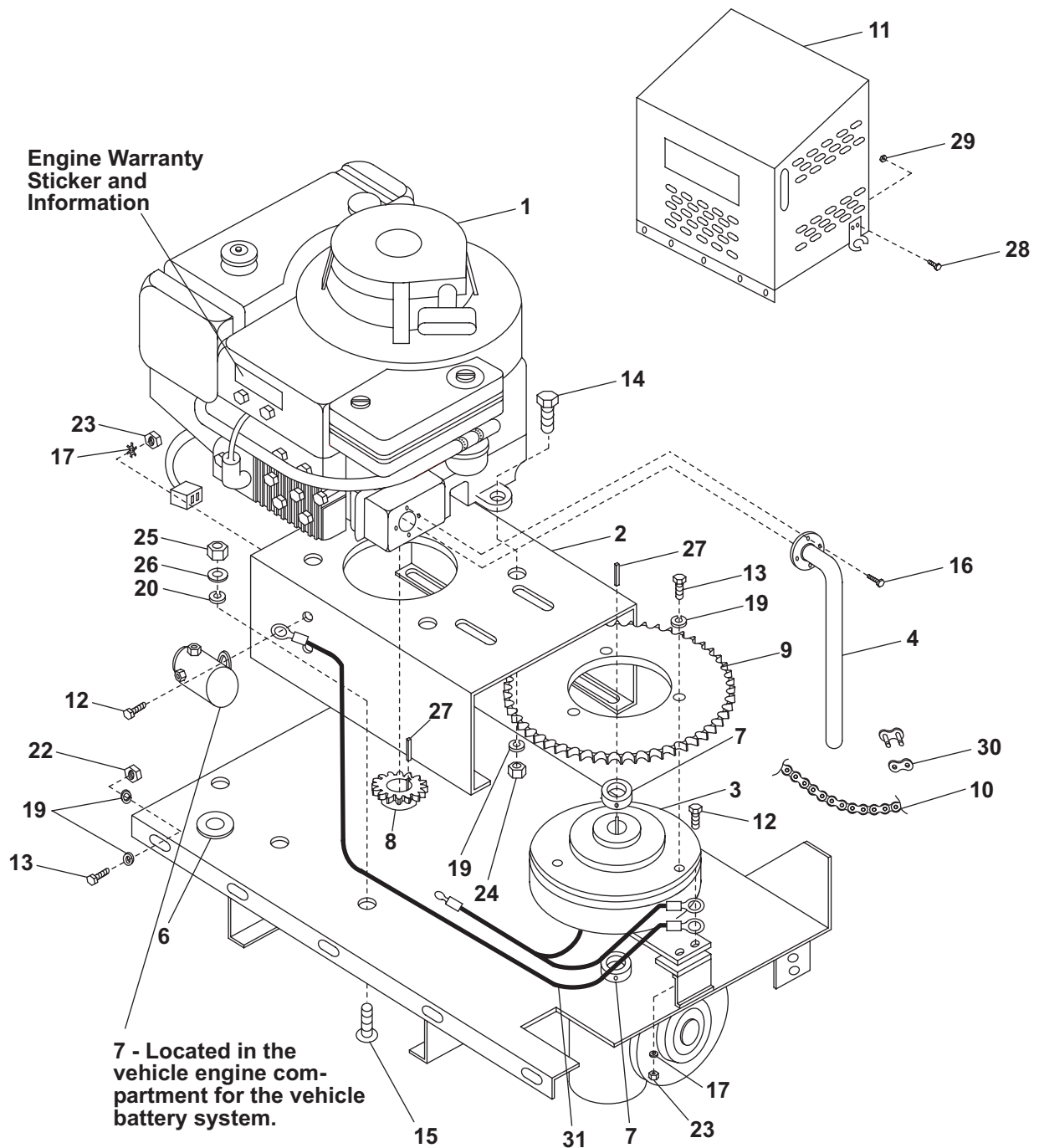




Briggs and Stratton Engine Drive Regular Capacity - Parts List

WESTERN PRODUCTS
7777 North 73RD Street
P.O. Box 245038
Milwaukee, Wisconsin 53224-9538

November 1, 1999
Form No. 68914



This parts list is for WESTERN® Hopper Spreaders with serial numbers
4558 and higher.

- over -

Briggs and Stratton Engine Drive - Regular Capacity - Parts List

Briggs and Stratton Engine Drive – Regular Capacity – Parts List							
Item	Part	Qty	Description	Item	Part	Qty	Description
1	65112	1	8.5 Horsepower Engine	18	91201	3	1/4" Lock Washer Zinc Plated
2	65356	1	Engine Mount Regular Capacity	18	91281	3	1/4" Lock Washer Stainless Steel
3	65212	1	Electric Clutch	19	91276	6	5/16" Lock Washer Stainless Steel
4	65369	1	Tubular Exhaust Extension	20	91203	6	3/8" Lock Washer Zinc Plated
5	65357	1	Relay – Hopper Spreader	20	91282	6	3/8" Lock Washer Stainless Steel
6	65216	1	Rubber Grommet, 1"	21	91099	10	5/16" Plain Washer Stainless Steel
7	65211	2	Locking Collar, 1"	22	91350	4	5/16"-18 Hex Locknut Stainless Steel
8	65214	1	Sprocket, #40 x 12T x 1" ID	23	91411	3	1/4"-20 Hex Nut Zinc Plated
9	65209	1	Sprocket, Clutch - #40 x 52T	23	91429	3	1/4"-20 Hex Nut Stainless Steel
10	68350	1	#40 Roller Chain, 29.5" Long	24	91412	4	5/16"-18 Hex Nut Zinc Plated
11	68502	1	Engine Cover Regular Capacity Mild Steel	24	91430	4	5/16"-18 Hex Nut Stainless Steel
11	68501	1	Engine Cover Regular Capacity Stainless Steel	25	91413	6	3/8"-16 Hex Nut Zinc Plated
12	90002	3	1/4"-20 x 3/4" Hex Cap Screw Zinc Plated	25	91431	6	3/8"-16 Hex Nut Stainless Steel
12	90381	3	1/4"-20 x 3/4" Hex Cap Screw Stainless Steel	26	91103	4	3/8" Plain Washer Zinc Plated
13	93162	7	5/16"-18 x 3/4" Hex Cap Screw Stainless Steel	26	91123	4	3/8" Plain Washer Stainless Steel
14	90022	4	5/16"-18 x 1-1/2" Hex Cap Screw Zinc Plated	27	65174	2	Machine Key, 1/4" Square x 1-1/2"
15	90201	4	3/8"-16 x 1" Carriage Bolt Zinc Plated	28	67092	4	#10-24 x 1/2" Socket Button Head Cap Screw Stainless Steel
15	90375	6	3/8"-16 x 1" Carriage Bolt Stainless Steel	29	91330	4	#10-24 Hex Locknut Stainless Steel
16	90648	6	#8-18 x 3/8" Lock Screw Zinc Plated	30	92980	1	#40 Roller Chain Master Link
17	91262	3	1/4" External Tooth Lock Washer Zinc Plated	31	67241	1	Clutch Ground Cable
17	67083	3	1/4" External Tooth Lock Washer Stainless Steel				

Copyright© 1999 Douglas Dynamics, L.L.C. All rights reserved. This material may not be reproduced or copied, in whole or in part, in any printed, mechanical, electronic, film or other distribution and storage media, without the written consent of Western Products. Authorization to photocopy items for internal or personal use by Western Products outlets is granted.

Western Products reserves the right under its product improvement policy to change construction or design details and furnish equipment when so altered without reference to illustrations or specifications used herein. Western Products and the vehicle manufacturer may require and/or recommend optional equipment for hopper spreaders. Western Products offers a limited warranty for all hopper spreaders and accessories. See separately printed page for this important information. The following is a registered® trademark of Douglas Dynamics, L.L.C.: WESTERN®.

Printed in USA

November 1, 1999

2

Form No. 68914