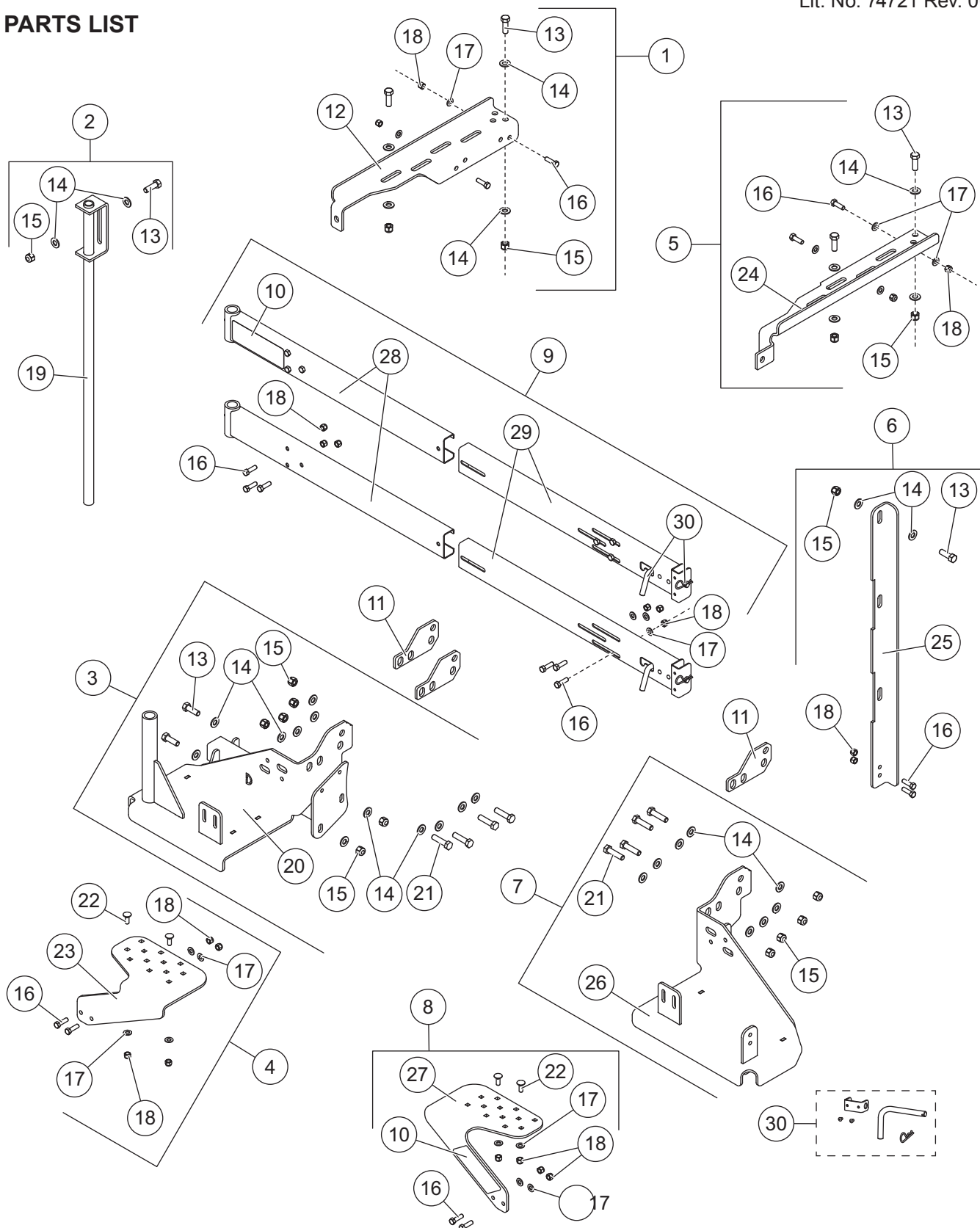


PARTS LIST



Items 3 and 7 bracket assemblies also use OEM fasteners (not shown).

31350-1

31350-1 Pivot Mount							
Item	Part	Qty	Description	Item	Part	Qty	Description
1	75965	1	Top Plate Kit – DS	7	74702	1	Bracket Assembly – PS
2	74701	1	Pivot Tube Assembly	8	74705	1	Spreader Rest Kit – PS
3	74700	1	Bracket Assembly – DS	9	75960	1	Channel Assembly Kit
4	74703	1	Spreader Rest Kit – DS	10	P2110	2	Label – Caution, Do Not Swing
5	75966	1	Top Plate Kit – PS	11	74711	3	Spacer Plate
6	74704	1	Latch Bar Kit	ns	74707	1	Bolt Bag
Item 1 75965 Top Plate Kit – DS							
12		1	Top Plate – DS	16		2	3/8-16 x 1-1/2 Hex Cap Screw G5
13		2	1/2-13 x 1-1/2 Hex Cap Screw G5	17		2	3/8 Flat Washer
14		4	1/2 Flat Washer	18		2	3/8-16 Hex Locknut GB
15		2	1/2-13 Hex Locknut GB				
Item 2 74701 Pivot Tube Assembly							
13		1	1/2-13 x 1-1/2 Hex Cap Screw G5	15		1	1/2-13 Hex Locknut GB
14		2	1/2 Flat Washer	19	57309	1	Pivot Tube Assembly
Item 3 74700 Bracket Assembly – DS							
13		2	1/2-13 x 1-1/2 Hex Cap Screw G5	20		1	Bracket Assembly – DS
14		12	1/2 Hardened Flat Washer	21		4	1/2-13 x 2 Hex Cap Screw G8
15		6	1/2-13 Hex Locknut GB				
Item 4 74703 Spreader Rest Kit – DS							
16		2	3/8-16 x 1-1/4 Hex Cap Screw G5	22		2	3/8-16 x 1 Carriage Bolt
17		4	3/8 Flat Washer	23		1	Spreader Rest – DS
18		4	3/8-16 Hex Locknut GB				
Item 5 75966 Top Plate Kit – PS							
13		2	1/2-13 x 1-1/2 Hex Cap Screw G5	17		2	3/8 Flat Washer
14		4	1/2 Flat Washer	18		2	3/8-16 Hex Locknut GB
15		2	1/2-13 Hex Locknut GB	24		1	Top Plate – PS
16		2	3/8-16 x 1-1/2 Hex Cap Screw G5				
Item 6 74704 Latch Bar Kit							
13		1	1/2-13 x 1-1/2 Hex Cap Screw G5	16		2	3/8-16 x 1-1/4 Hex Cap Screw G5
14		2	1/2 Flat Washer	18		2	3/8-16 Hex Locknut GB
15		1	1/2-13 Hex Locknut GB	25		1	Latch Bar
Item 7 74702 Bracket Assembly – PS							
14		8	1/2 Flat Washer	21		4	1/2-13 x 2 Hex Cap Screw G8
15		4	1/2-13 Hex Locknut GB	26		1	Bracket Assembly – PS
Item 8 74705 Spreader Rest Kit – PS							
10	P2110	1	Label – Caution, Do Not Swing	18		4	3/8-16 Hex Locknut GB
16		2	3/8-16 x 1-1/4 Hex Cap Screw G5	22		2	3/8-16 x 1 Carriage Bolt
17		4	3/8 Flat Washer	27		1	Spreader Rest – PS
Item 9 75960 Channel Assembly Kit							
10	P2110	1	Label – Caution, Do Not Swing	28		2	Pivot Channel
16		12	3/8-16 x 1-1/4 Hex Cap Screw G5	ns		2	Grease Fitting
17		6	3/8 Flat Washer	29		2	Latch Channel
18		12	3/8-16 Hex Locknut GB	30	75556	2	Lock Pin Kit
ns = not shown				G = Grade			

Copyright © 2019 Douglas Dynamics, LLC. All rights reserved. This material may not be reproduced or copied, in whole or in part, in any printed, mechanical, electronic, film, or other distribution and storage media, without the written consent of the company. Authorization to photocopy items for internal or personal use by the company's outlets or spreader owner is granted.

The company reserves the right under its product improvement policy to change construction or design details and furnish equipment when so altered without reference to illustrations or specifications used. This equipment manufacturer or the vehicle manufacturer may require or recommend optional equipment for spreaders. Do not exceed vehicle ratings with a spreader. The company offers a limited warranty for all spreaders and accessories. See separately printed page for this important information.