



Western Products
PO Box 245038
Milwaukee, WI 53224-9538
www.westernplows.com

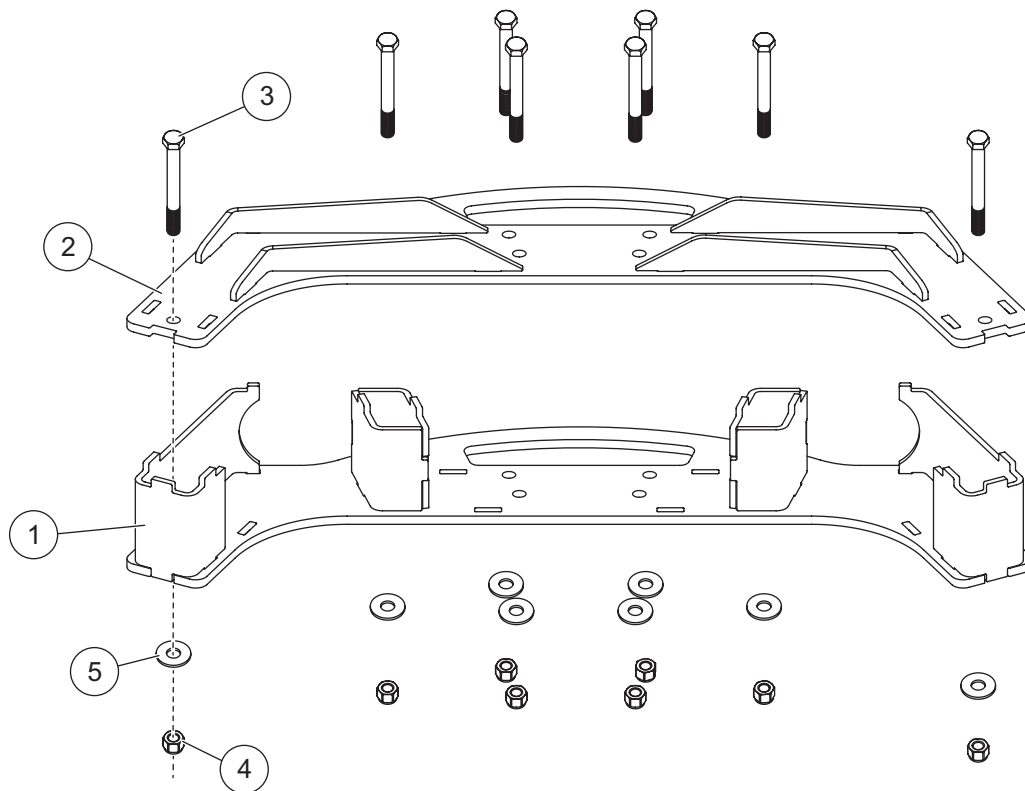
A DIVISION OF DOUGLAS DYNAMICS, LLC

**96917 – PRO PLUS® HD
10' Blade**

BLADE STOP KIT

Parts List & Installation Instructions

PARTS LIST



96917 Blade Stop Kit							
Item	Part	Qty	Description	Item	Part	Qty	Description
1		1	Blade Stop, Lower	ns	96916	1	Bolt Bag – Blade Angle Stop
2		1	Blade Stop, Top				
96916 Bolt Bag – Blade Angle Stop							
3		8	1/2-13 x 5-1/2 Hex Cap Screw G5	5		8	1/2 Flat Washer
4		8	1/2-13 Hex Locknut GB				
ns = not shown				G = Grade			

⚠ WARNING

Do not exceed GVWR or GAWR, including blade and ballast. The rating label is found on the driver-side vehicle door cornerpost.

⚠ CAUTION

Read this document before installing the blade stop kit.

⚠ CAUTION

Use standard methods and practices when attaching snowplow and installing accessories, including proper personal protective safety equipment.

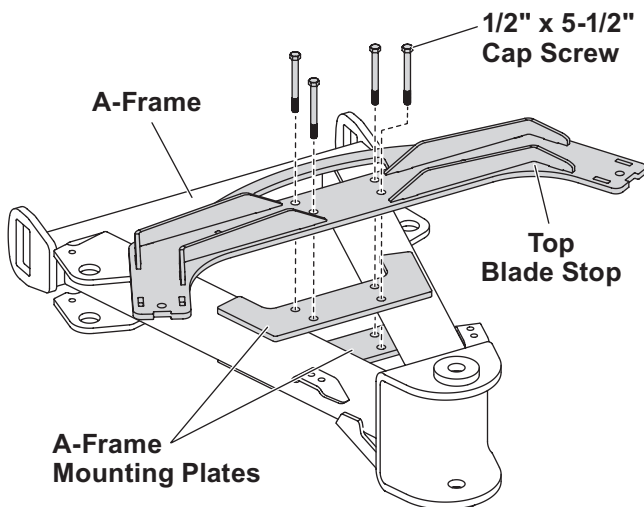
96917 BLADE STOP KIT

INSTALLATION INSTRUCTIONS

NOTE: Two people are recommended for the following installation.

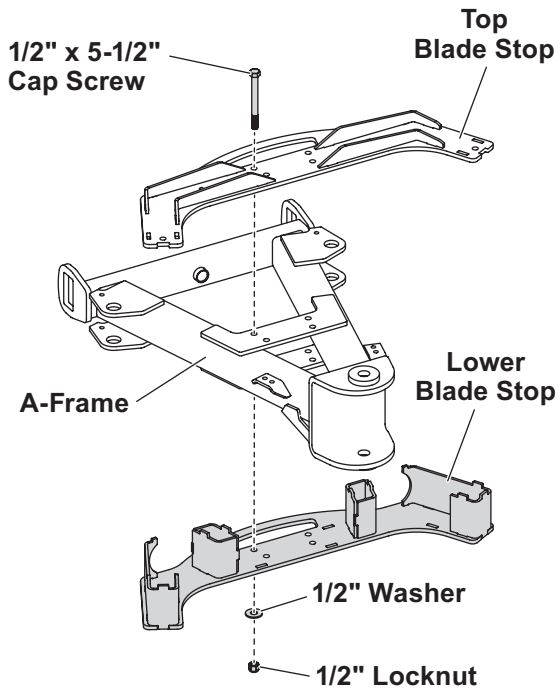
Park the vehicle on a smooth, level, hard surface, such as concrete. Lower the blade to the ground, and turn the control OFF. Disconnect the snowplow from the vehicle, or turn the vehicle ignition to the "OFF" position and remove the key.

1. Place the top blade stop on the top of the A-frame, aligning the holes with the A-frame mounting plates.



2. Insert four 1/2" x 5-1/2" cap screws through the holes in the top blade stop and the A-frame mounting plates.

3. With the A-frame supported off the ground, place the lower blade stop beneath the A-frame and align the holes with the cap screws previously inserted in Step 2.



4. Attach the lower blade stop to the A-frame by adding four 1/2" washers and 1/2" locknuts to the cap screws.
5. Insert the remaining four 1/2" x 5-1/2" cap screws through the holes in the top blade stop and lower blade stop.
6. Use a 1/2" washer and a 1/2" locknut to secure each cap screw.
7. Tighten 1/2" fasteners to 75 ft-lb.

Copyright © 2018 Douglas Dynamics, LLC. All rights reserved. This material may not be reproduced or copied, in whole or in part, in any printed, mechanical, electronic, film, or other distribution and storage media, without the written consent of Western Products. Authorization to photocopy items for internal or personal use by Western Products outlets or snowplow owner is granted.

Western Products reserves the right under its product improvement policy to change construction or design details and furnish equipment when so altered without reference to illustrations or specifications used. Western Products or the vehicle manufacturer may require or recommend optional equipment for snow removal. Do not exceed vehicle ratings with a snowplow. Western Products offers a limited warranty for all snowplows and accessories. See separately printed page for this important information. The following are registered (®) or unregistered (™) trademarks of Douglas Dynamics, LLC: PRO PLUS®, UltraMount® 2, WESTERN®.

Printed in U.S.A.