



LOW PROFILE LIGHT KIT

**INSTALLATION INSTRUCTIONS**

This Light Kit includes pre-assembled wiring harness with color coded wires, convenient connectors and switch, to greatly simplify installation and provide performance equal to the existing system. Save time by following the instructions carefully. Always check, to be certain the vehicle lights work properly, before beginning the installation.

1. **ASSEMBLE LIGHT BRACKET TO LIFT FRAME**, using four holes in lift frame as shown on parts diagram.
2. **ASSEMBLE LAMPS TO BRACKETS**, headlamps to inside, park/turn lamps to outside. Adjust headlamps after installation is completed. Tie down lamp leads with furnished cable ties wrapping them around the light bracket bars, and insert extension leads through the center portion of the vehicle grille.

**CAUTION:** Before proceeding, disconnect battery cable to avoid possible electrical equipment damage.

3. **INSTALL HEADLAMP CIRCUIT.** On driver's side, drill a 1/2" diameter hole, if necessary, through the bulkhead adjacent to the radiator to thread the wiring harness through, and another 1/2" diameter hole through the firewall near the vehicle electrical harness mounted on the firewall. Drill from the engine compartment side, if possible, and check before drilling to avoid wires, lines or other items.

Insert the light kit harness through the 1/2" Dia. hole in the radiator bulkhead. Thread the spade ends through from the front of the bulkhead, if connection to the existing headlamp is to be made between the grille and radiator. If this connection is to be made in the engine compartment begin by threading the auxiliary headlamp connectors through the bulkhead from the engine compartment. Insert the spade ends through the hole in the firewall and into the cab.

Driver side — remove existing headlamp plug and connect male plug of harness to it. Connect the short, female harness plug to the driver side headlamp and the long harness plug to the curb side headlamp. Install plastic safety cap into existing curb side headlamp plug.

The above connections can usually be accomplished by removing one or both headlamps. In some rare instances it may be necessary to remove the grille, and on others, connection may be accomplished without removing lamps or grille.

Cut one side of the rubber grommets, place them around the harness, and insert them into the drilled hole or holes to protect the harness. Connect bullet end of the black wire from each auxiliary headlamp into the black wire side of the harness receptacle and bullet end of the white wire from each auxiliary headlamp into the white wire side of the harness receptacle.

**DRILL INSTRUMENT PANEL** with a 15/32" drill, near the existing vehicle light switch making sure there is nothing in the path of the drill and that there is room to mount the auxiliary toggle selector switch. Connect the six spade terminals of the color coded wires to the appropriate terminals of the auxiliary toggle selector switch as shown in the wiring diagram. Then install the switch in a vertical position to the instrument panel. Affix the toggle selector switch label over the switch toggle on the instrument panel.

4. **INSTALL PARK/TURN LAMP CIRCUIT.** Identify the vehicle park and turn lamp wires from each lamp. **DO NOT CUT OR STRIP THESE WIRES** since the auxiliary park/turn lamps operate with the vehicle park/turn lamps. Attach a black self-stripping bullet receptacle connector to each of the four wires adjacent to the vehicle park/turn lamps as shown in diagram by placing the outer groove of the bullet receptacle connector over the park or turn lamp wire. Fold the receptacle connector over the wire and snap into place to lock the connector. Insert the bullet end of the brown wire from each auxiliary park/turn lamp into the bullet receptacle connector attached to the two vehicle park wires, and the bullet end of each red wire into the bullet receptacle connectors attached to the two vehicle turn wires. Extra grommets are furnished in the kit if 1/2" diameter holes must be drilled through radiator bulkhead for the park and turn wires.

With the addition of the auxiliary park/turn lamps to the vehicle circuit, it is necessary to replace the standard flasher in the vehicle with the heavy duty flasher furnished with this kit.

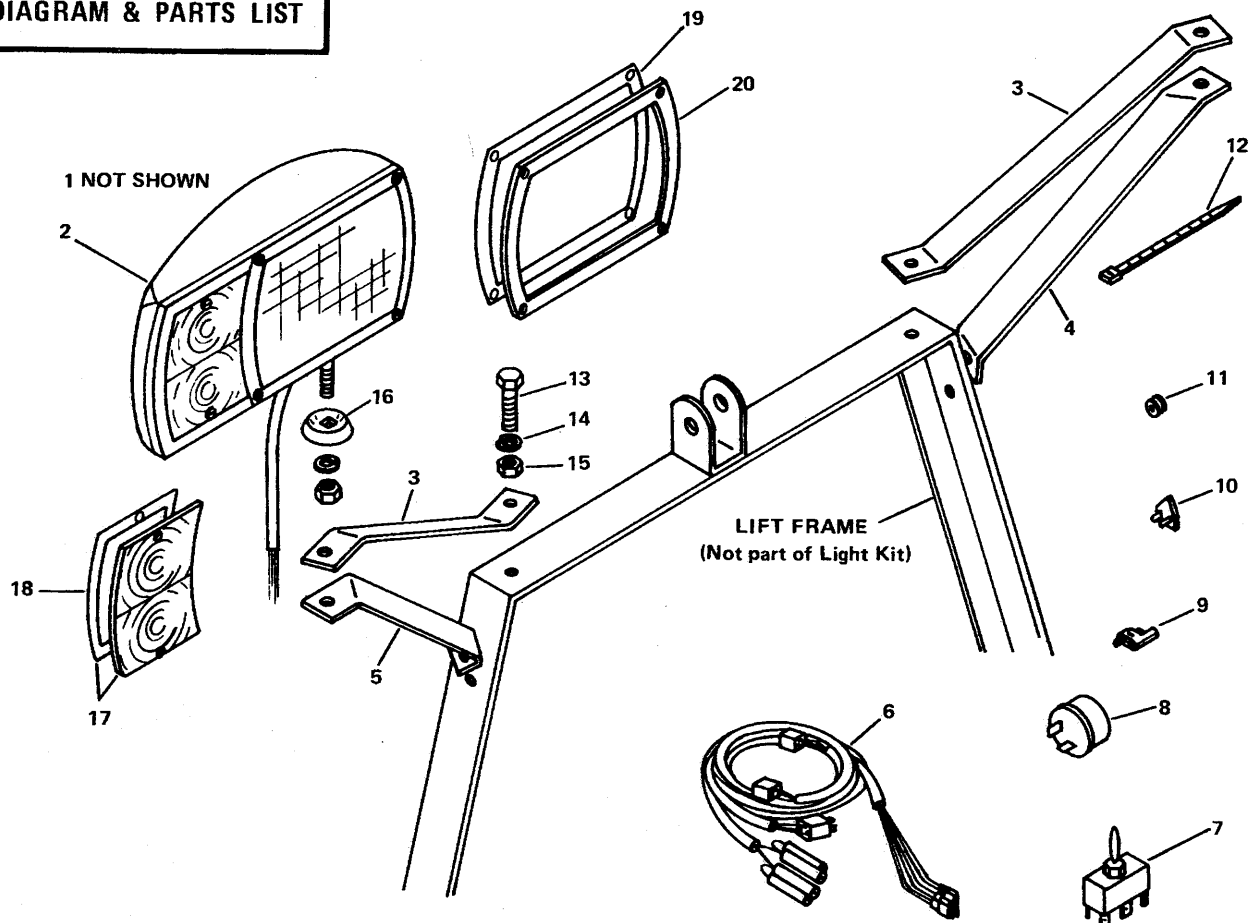
**FINAL CHECK:** When the electrical circuit is completed per these instructions, reconnect the vehicle battery. Check the operation of all vehicle lights. The vehicle and auxiliary headlamps are controlled by the auxiliary toggle selector switch. The park/turn lamps are not. With the toggle selector switch in the auxiliary position, adjust the auxiliary headlamps in the brackets keeping in mind the higher position of the lights and any applicable federal, state, or local regulation.

Finally, secure all wires and harness with cable ties so they do not interfere with hot or moving parts in engine compartment.

**IMPORTANT:** Low profile vehicles (Jeep, Scout, Toyota, etc.) require that the lift chain be attached to the forward lifting lug on the snowplow A-Frame. This lift chain location controls blade position so that when the blade is raised and angled, it will not obscure the headlamp beam.

## LOW PROFILE LIGHT KIT

## DIAGRAM &amp; PARTS LIST



| Item      | Part No. | Quan. | Description                                     |
|-----------|----------|-------|---|
| 1         | 60003    | 1     | Rectangular Lamp With Park & Turn — Driver Side |
| 2         | 60004    | 1     | Rectangular Lamp With Park & Turn — Curb Side   |
| 3         | 59349    | 2     | Light Bracket Bar                               |
| 4         | 60005    | 1     | Light Bracket Brace Bar — Driver Side           |
| 5         | 60006    | 1     | Light Bracket Brace Bar — Curb Side             |
| 6         | 59805    | 1     | Plug-In Light Harness                           |
| 7         | 53845    | 1     | Auxiliary Toggle Selector Switch                |
| 8         | 60109    | 1     | Heavy Duty Flasher                              |
| 9         | 59224    | 4     | Bullet Receptacle Connector                     |
| 10        | 59804    | 1     | Safety Cap (Plastic)                            |
| 11        | 25301    | 4     | Grommet   |
| 12        | 59223    | 6     | Cable Tie                                       |
| 13        |          | 4     | Cap Screw — 3/8"-16 x 1-1/4" Long               |
| 14        |          | 4     | Lockwasher — 3/8"                               |
| 15        |          | 4     | Hex Nut — 3/8"-16                               |
| 16        | 49012    | 1     | Headlamp Swivel                                 |
| 17        | 49054    | 1     | Clear Lens With Gasket                          |
| 18        | 49053    | 1     | Gasket (For Park & Turn Lens)                   |
| 19        | 49051    | 1     | Gasket (For Headlamp Retainer)                  |
| 20        | 49052    | 1     | Headlamp Retainer                               |
| NOT SHOWN | 59038    | 1     | Toggle Selector Switch Label                    |

The following are registered<sup>®</sup> or unregistered<sup>™</sup> Trade Marks of Douglas Dynamics, Inc.  
WESTERN<sup>®</sup> ISARMATIC<sup>®</sup> Hydra-Turn<sup>®</sup> Roll-Action<sup>™</sup> SnowKing<sup>™</sup>

Western reserves the right under its Product Improvement Policy to change construction or design details and furnish equipment when so altered without reference to illustrations or specifications used herein.