



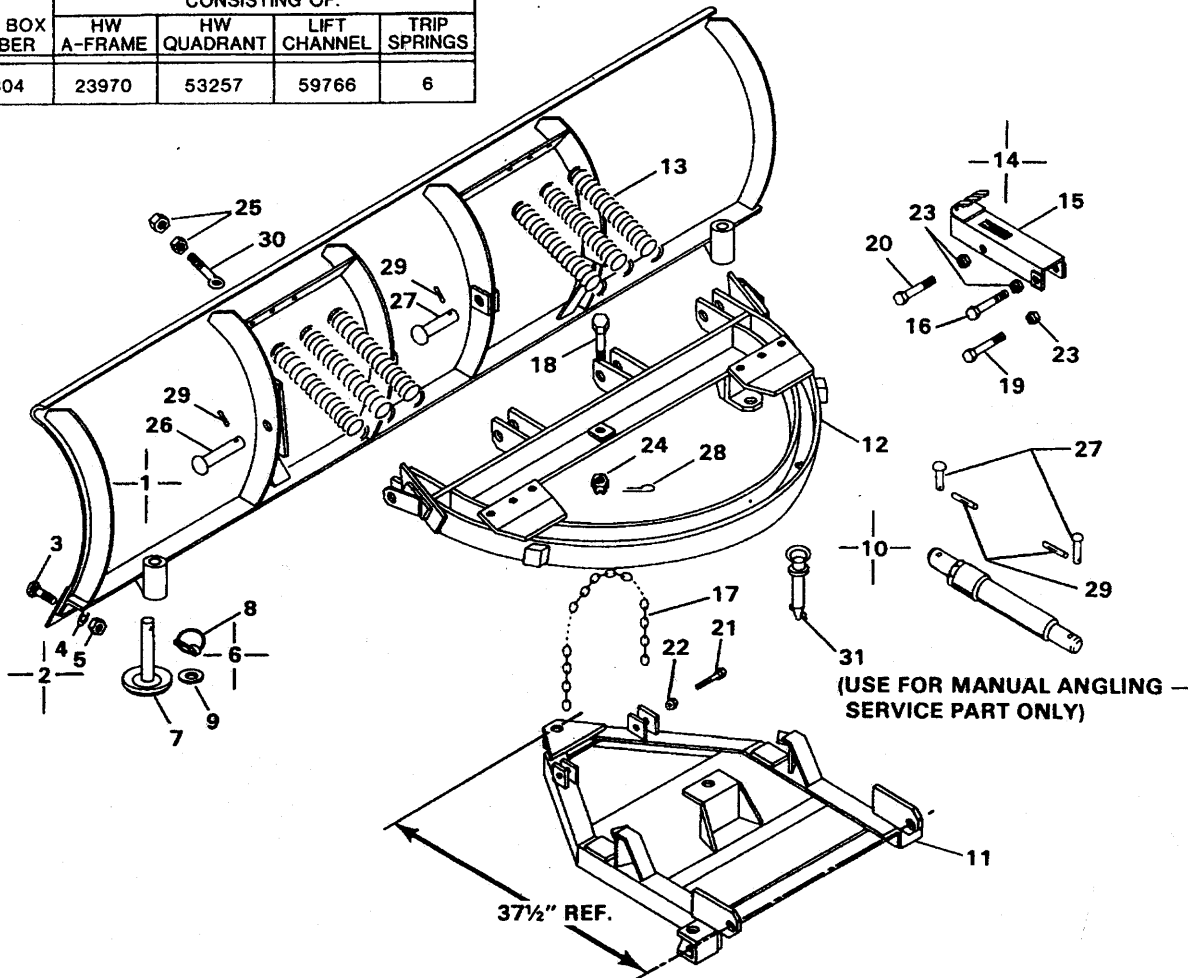
WESTERN PRODUCTS
 7777 NORTH 73RD STREET
 P.O. BOX 23045
 MILWAUKEE, WISCONSIN 53223

DD A DIVISION OF DOUGLAS DYNAMICS, INC.

Heavyweight
 Blade, A-Frame,
 Quadrant & Lift Channel

DIAGRAM & PARTS LIST

A & Q BOX NUMBER	CONSISTING OF:			
	HW A-FRAME	HW QUADRANT	LIFT CHANNEL	TRIP SPRINGS
58304	23970	53257	59766	6



Item	Part No	Qty.	Description	Item	Part No	Qty.	Description
1	53217	1	Blade Assembly — 9' — HW	16	90160	1	Capscrew — 3/4"-10 x 4-1/2" Long — Grade 5
1	58496	1	Blade Assembly — 10' —HW	17	59737	1	Chain
2	58817	1	*Cutting Edge Assembly — 9'	18	90191	1	Pivot Bolt — 1"-8 x 4" Long
2	58818	1	*Cutting Edge Assembly — 10'	19	90159	1	Capscrew — 3/4"-10 x 3-1/2" Long — Grade 5 — (Lower Isarmatic® Fastener)
3	90396	11	Plow Bolt — 5/8"-11 x 2" Long — 9'	20	90161	1	Capscrew — 3/4"-10 x 4" Long — Grade 5
3	90396	12	Plow Bolt — 5/8"-11 x 2" Long — 10'	21	90063	2	Capscrew — 3/8"-16 x 3" Long — Grade 8
4	91206	11	Lockwasher — 5/8" — 9'	22	91333	2	Locknut — 3/8"-16
4	91206	12	Lockwasher — 5/8" — 10'	23	91338	3	Locknut — 3/4"-10 Nylon Insert Type
5	91416	11	Hex Nut - 5/8"-11 — 9'	24	91474	1	Slotted Hex Nut — 1"-8
5	91416	12	Hex Nut — 5/8"-11 — 10'	25	91416	12	Hex Nut — 5/8"-11
6	53595	2	Disc Shoe Assembly - (Includes Items 7 thru 10)	26	93080	2	Rivet — 1" x 5" Long
7		1	Disc Shoe Unit	27	93077	6	Rivet — 1" x 4" Long
8	93010	1	Linch Pin — 7/16" x 1-3/4" Long	28	91911	1	Cotter Pin — 5/32" x 1-1/2" Long
9	91109	17	Flat Washer — 1" SAE	29	92004	8	Groove Pin — 3/16" x 1-1/4" Long
10	58304	1	A-Frame & Quadrant Assembly	30	90493	6	Eyebolt — 5/8"-11 x 6" Long
11	23970	1	A-Frame Unit	31	93015	1	Toggle Pin — 1" x 6" Long
12	53257	1	Quadrant Unit	SERVICE PART ONLY — Not in above assemblies			
13	23039	6	Spring	*Cutting Edge Assembly includes appropriate number of bolts, nuts and lockwashers.			
14	49007	1	Lift Channel Assembly — (Includes Items 15 & 16)				
15		1	Lift Channel				

NOTE: Only those items indicated with a **PART NUMBER** are available for service.