



A DIVISION OF DOUGLAS DYNAMICS, L.L.C.

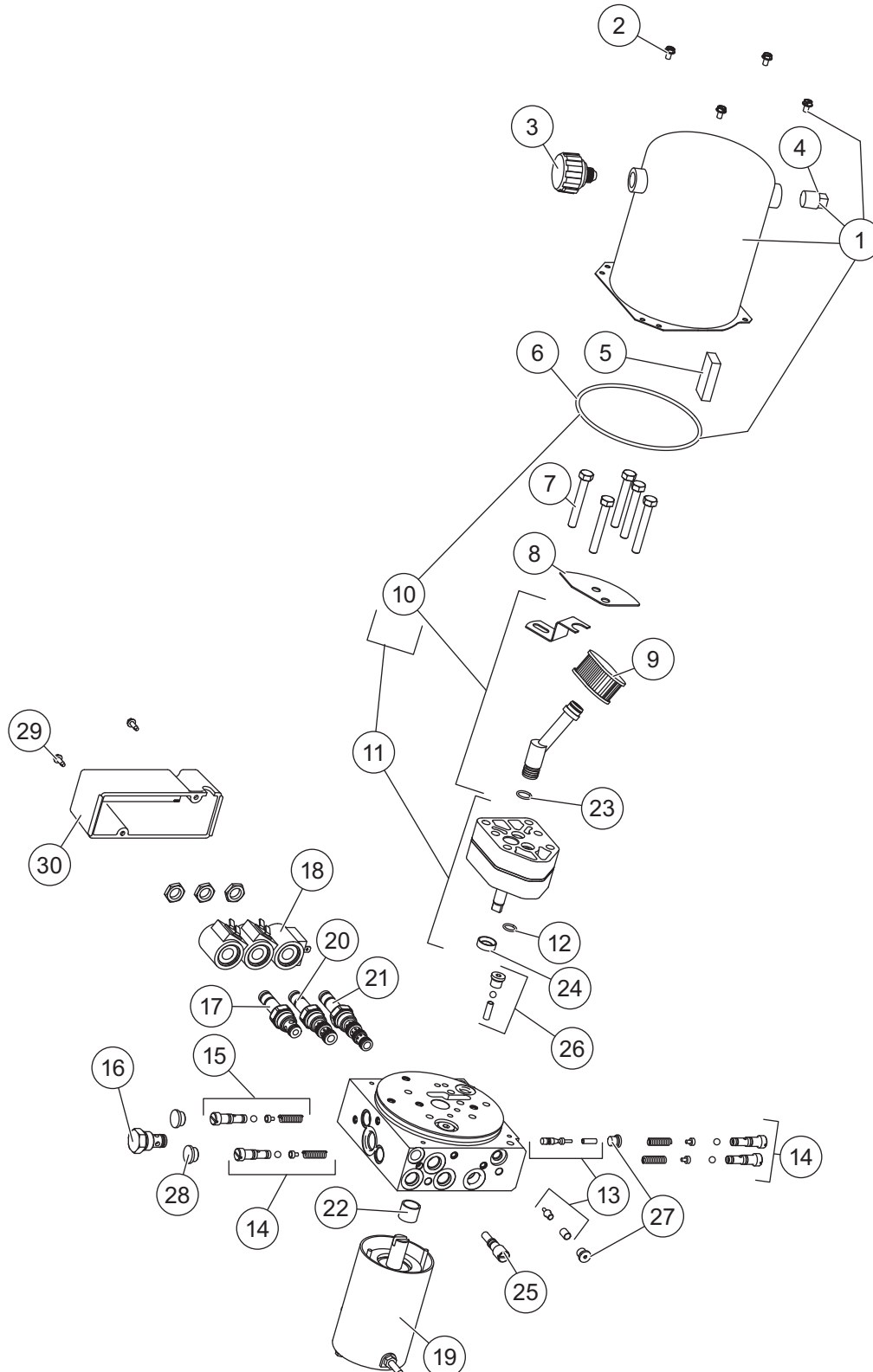
Western Products
PO Box 245038
Milwaukee, WI 53224-9538
www.westernplows.com

Suburbanite™ Personal Plow

HYDRAULIC UNIT

Parts List

PARTS LIST



48602 HYDRAULIC UNIT

48602 Hydraulic Unit							
Item	Part	Qty	Description	Item	Part	Qty	Description
1	48538	1	Reservoir Kit	15	27792-1	1	Relief Valve Repair Kit
2	66607	4	10-24 x 5/16 Machine Screw Slotted Hex Washer Head	16	44334-1	1	Check Valve CV08-20
3	21727-2K	1	Breather 3/8 NPT Kit	17	49227K-2	1	Valve 2-Way w/Nut
4	92079	1	Plug 3/8 NPTF	18	49230K-2	3	Coil w/Spade Terminals
	48617	1	Reducer Bushing 3/8 x 1/4 NPT	19	27753	1	Motor Assembly 3"
5	73897	1	Magnet	20	66608-1	1	Cartridge Valve 3-Way w/Nut
6	66519	1	O-Ring 2 – 250	21	49229K-1	1	Cartridge Valve 4-Way w/Nut
7	90073	5	5/16-18 x 2-1/4 Hex Cap Screw G5	22	56364*	1	Bearing, Sleeve
8	48464	1	Plate Baffle	23	56416	1	O-Ring – 014
9	56789-3	1	Suction Filter	24	66515**	1	Pump Shaft Seal
10	66763-1	1	Inlet Fitting/Filter Kit	25	48517	1	Quill
11	27746	1	Hydraulic Pump Kit – IA	26	48518	1	Check Valve Assembly
12	56274	1	O-Ring – 013	27	92960	2	3/8-24 O-Ring Boss Plug
13	49226K	1	Poppet Check Valve Kit	28	56808	2	Plug
14	49138K-3	2	Relief Valve Kit (2 Sets)	29	90650	2	Cover Screw
				30	21394	1	Cover Assy
O-Ring Service Kits							
ns	56657-3	–	O-Ring & Back-Up Ring Kit	ns	49259-2	–	Seal Kit Cartridge 3-Way and 4-Way Valve
ns	49258-2	–	Seal Kit 2-Way Valve				
ns = not shown				G = Grade			

* Use 64589 tool to install (includes 56364)

** Use 28856 tool to install (includes 66515)

Copyright © 2009 Douglas Dynamics, L.L.C. All rights reserved. This material may not be reproduced or copied, in whole or in part, in any printed, mechanical, electronic, film or other distribution and storage media, without the written consent of Western Products. Authorization to photocopy items for internal or personal use by Western Products outlets or snowplow owner is granted.

Western Products reserves the right under its product improvement policy to change construction or design details and furnish equipment when so altered without reference to illustrations or specifications used. Western Products or the vehicle manufacturer may require or recommend optional equipment for snow removal. Do not exceed vehicle ratings with a snowplow. Western Products offers a limited warranty for all snowplows and accessories. See separately printed page for this important information. The following are registered (®) or unregistered (™) trademarks of Douglas Dynamics, L.L.C.: Suburbanite™, WESTERN®.

Printed in U.S.A.