



WESTERN PRODUCTS
7777 NORTH 73RD STREET
P.O. BOX 23045
MILWAUKEE, WISCONSIN 53223

dd A DIVISION OF DOUGLAS DYNAMICS, INC.

Box No. 59779
Model No. 280
Jeep Truck, Cherokee and
Wagoneer 1976 and Later
Grand Wagoneer 1984 and Later
Front Frame Lift-Mount
INSTALLATION INSTRUCTIONS

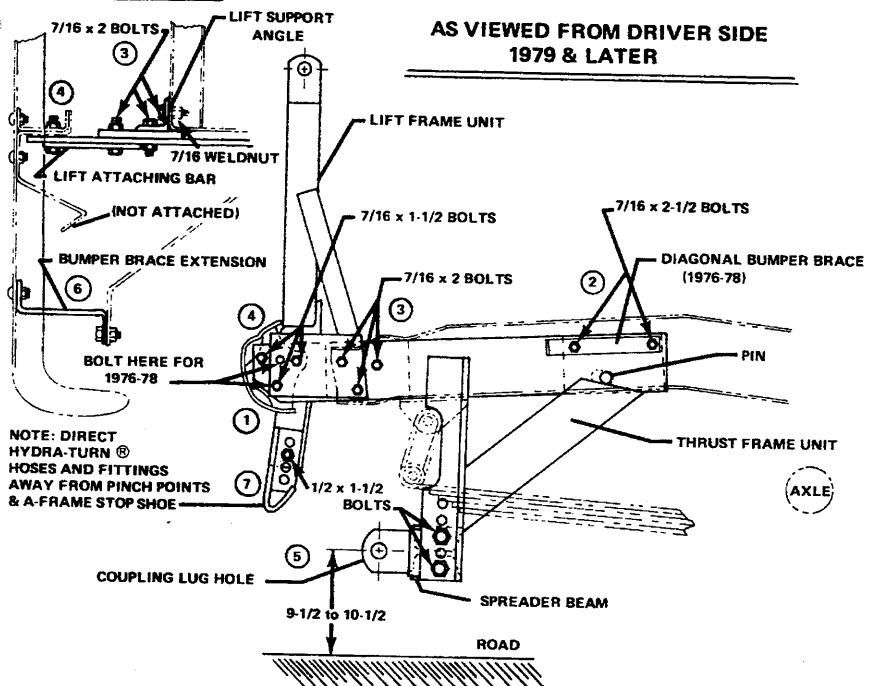
RECOMMENDED FASTENER TORQUE CHART				
SIZE	TORQUE IN FOOT POUNDS			
	GRADE 2	GRADE 5	GRADE 8	
1/4 - 20	6	9	13	
5/16 - 18	11	18	28	
3/8 - 16	19	31	46	
3/8 - 24	24	46	68	
7/16 - 14	30	50	75	
1/2 - 13	45	75	115	
9/16 - 12	66	110	165	
5/8 - 11	93	150	225	
3/4 - 10	150	250	370	
7/8 - 9	202	378	591	
1 - 8	300	583	893	

These torque values apply to lift-mount fasteners except those noted in the instructions where motion is desired.

MINIMUM VEHICLE RECOMMENDATIONS

Aux. Light Kit
H.D. Alternator
H.D. Battery
H.D. Suspension

TOP VIEW FOR 1976 THRU 1978



AS VIEWED FROM DRIVER SIDE 1979 & LATER

IMPORTANT: Read instructions before assembling. Bolts should be finger tight until the installation is completed to allow sufficient adjustment for aligning holes and locating parts to vehicle frame. Preventive maintenance can prevent accidents. Regularly inspect all components and repair or replace any worn, loose or damaged parts immediately. Remember to use standard methods and practices when attaching snowplow including wearing safety glasses during drilling. Install snowplow as follows:

LIFT-MOUNT ASSEMBLY:

1. Remove bumper from vehicle. (1976 thru '78) — Also remove bumper from diagonal bumper braces. Do Not dismantle bumper into sections. Next, remove diagonal bumper braces from vehicle.
2. Identify driver and curb side thrust frame units using diagram. Align rear holes in thrust frame unit to the two weld nuts above the 3/4" slot, located about 17" from front of frame. Also insert pin into this slot. Fasten to frame using 7/16" x 2-1/2" bolts and lock washers. (1976 thru '78) — Also replace bumper brace on top of thrust frame.
3. Place lift on top of thrust frame with lift attaching bars to the outside. Align holes as shown and secure using 7/16" x 2" bolts and locknuts in rear group of holes. (1976 thru '78) — Fasten right and left lift support angles to front cross member using flat washers, lock washers and 7/16" x 2" bolts into weldnuts.
4. Replace bumper with the brackets inside the thrust frames and aligned to the front group of holes (3). Attach using 7/16" x 1-1/2" bolts and locknuts. (1976 thru '78) — Fasten bumper brace to top center hole in front group, also place a bolt into the hole right below it. (Loosen bracket fasteners in face of bumper if necessary).
5. Position spreader beam with spring clearance notches up, between thrust frame angles and maintain coupling lug hole center between 9-1/2" and 10-1/2" from road surface. Secure using 1/2" x 1-1/2" bolts and locknuts. Thrust frame angles should be shortened to provide maximum road clearance if other than lowest set of holes is used.
6. (1976 thru '78) — Fasten bumper brace extension between bumper and diagonal braces using existing bolts and nuts.
7. Adjust A-frame stop shoe to gain maximum lift without the fully angled blade (or the A-frame) striking the bumper. Check for a minimum 1" clearance between blade at bumper ends, and/or between A-frame and closest point of bumper.

NOTE: A blade trip spring, eyebolt and two 5/8" hexnuts have been supplied in this kit and should be used with any blade 7' or longer. The lift chain must be attached to rear hole on A-frame to avoid interference to center trip spring.

HYDRAULICS: Mount the hydraulic system using the instructions furnished in the hydraulic carton.

Box No. 59779

Model No. 280

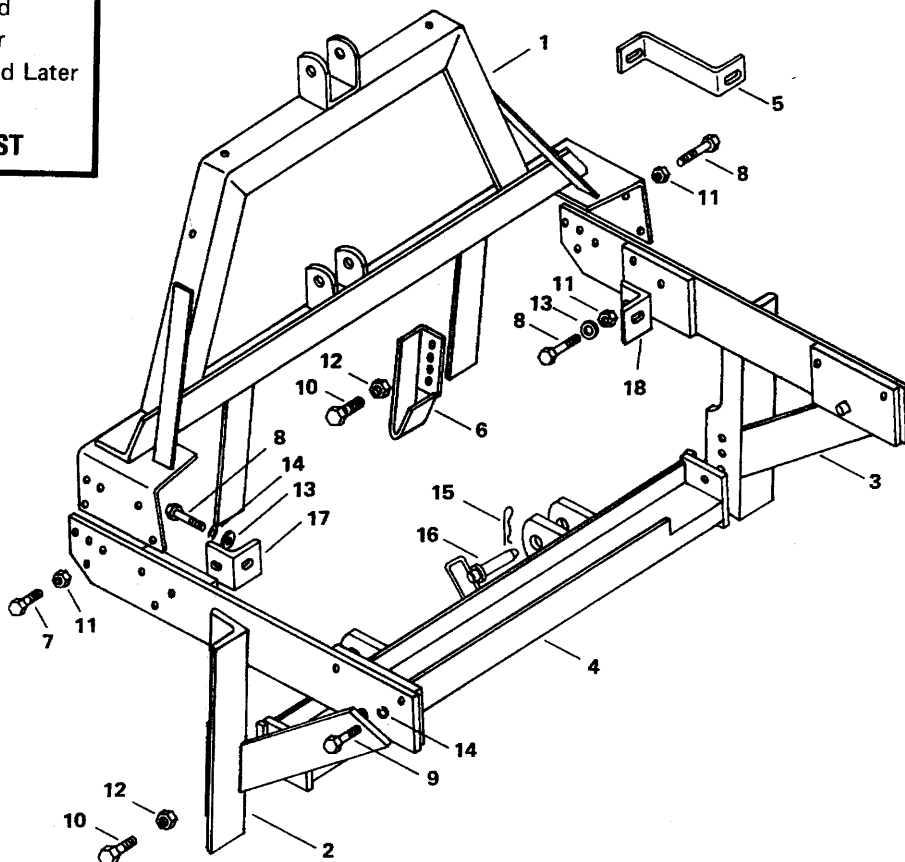
Jeep Truck, Cherokee and

Wagoneer 1976 and Later

Grand Wagoneer 1984 and Later

Front Frame Lift-Mount

DIAGRAM & PARTS LIST



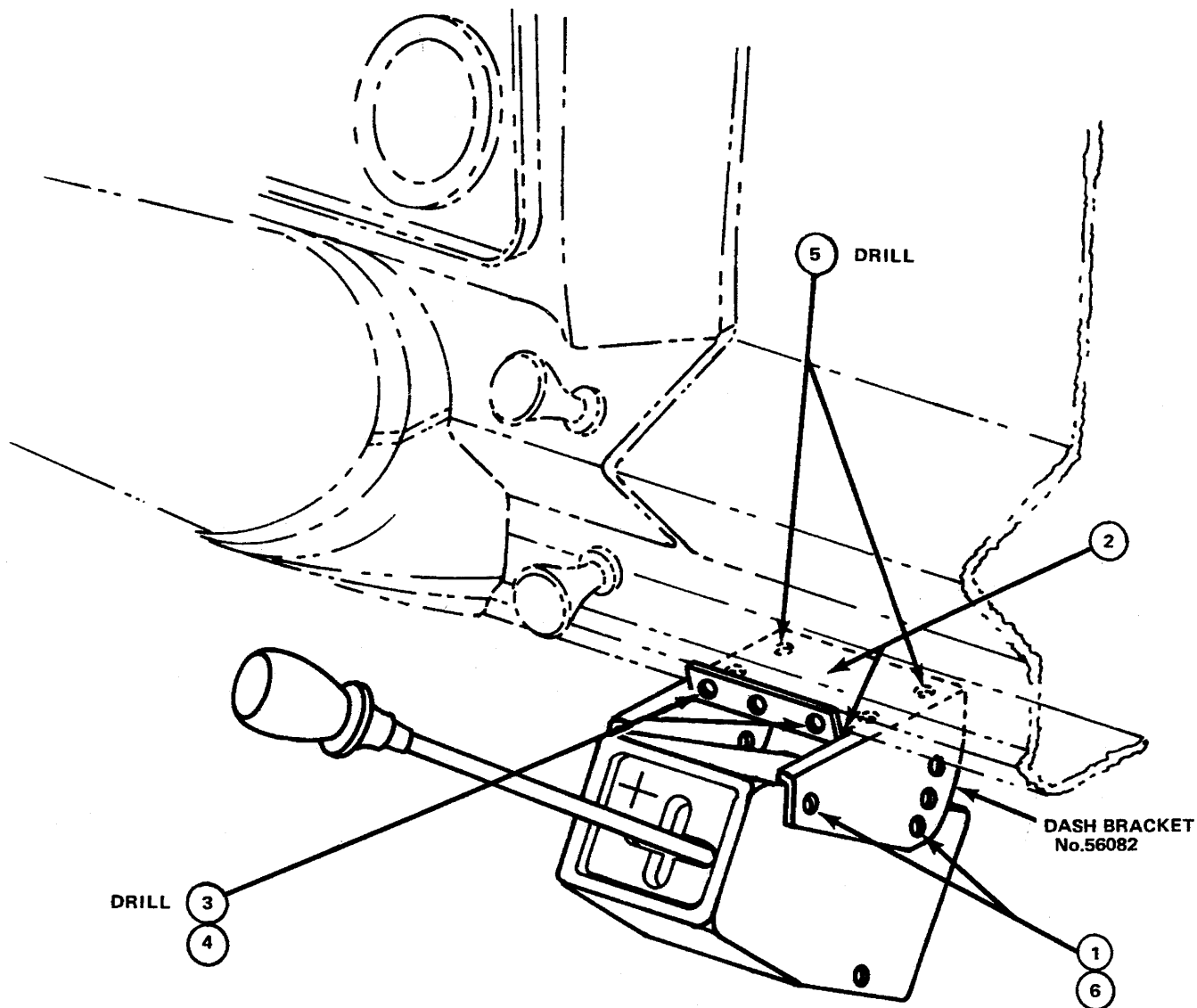
3053-8312

3054-8312

Item	Part No.	Quan.	Description
1	59789	1	Lift Frame Unit
2	59782	1	Thrust Frame Unit – Driver Side
3	59787	1	Thrust Frame Unit – Curb Side
4	59613	1	Spreader Beam
5	59791	2	Bumper Brace Extension (1976 - 1978)
6	59795	2	A-Frame Stop Shoe
7	90067	6	Capscrew - 7/16"–14 x 1-1/2" Long – Grade 5
8	90069	8	Capscrew - 7/16"–14 x 2" Long – Grade 5
9	90070	4	Capscrew - 7/16"–14 x 2-1/2" Long – Grade 5
10	90100	6	Capscrew - 1/2"–13 x 1-1/2" Long – Grade 5
11	91334	12	Locknut - 7/16"–14 Nylon Insert Type
12	91335	6	Locknut - 1/2"–13 – Nylon Insert Type
13		4	Flat Washer – 7/16"
14		6	Lock Washer – 7/16"
15	91965	2	Hairpin Cotter - 5/32" x 2-15/16" Long O/A Length
16	93028	2	Hitch Pin - 1" x 3-1/2" Long
17	59796	1	Lift Support Angle Driver Side (1976 - 1978)
18	59797	1	Lift Support Angle Curb Side (1976 - 1978)

NOTE: Only those items indicated with a **PART NUMBER** are available for Service.

**INSTALLATION INSTRUCTIONS
FOR — IIIa CONTROL
TO VEHICLE INSTRUMENT PANEL
JEEP TRUCK & CHEROKEE**



1. Secure dash bracket to the IIIa Control using 4-No. 8 x 5/8" long hex head screws.
2. Locate IIIa Control under glove compartment door as shown (with air conditioning just to the left of the vent) or wherever is most convenient. The lower half of the bracket should fit flat against the bottom flange of the dash. Verify that IIIa Control lever will clear vehicle components in all positions and for adequate drill clearance before drilling holes.
3. Mark and drill two 1/8" holes in the dash to align to the outside top holes in the bracket.
4. Remove the bracket from the IIIa Control and loosely fasten it to the dash using 2-No. 10 sheet metal screws and lock washers.
5. Mark and drill two holes into the bottom flange of the dash to align to the holes in the bracket. Secure using No. 10 sheet metal screws and lock washers. Tighten all four screws securely.
6. Place IIIa Control into bracket and fasten in desired position.

INSTALLATION INSTRUCTIONS FOR 59700 BLADE GUIDE ASSEMBLY

The following instructions simply outline the attachment of this blade guide assembly.

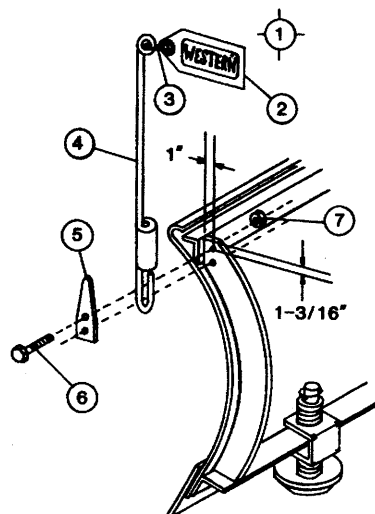
- Step 1. Lower blade to ground level.
- Step 2. If hole is not pre-drilled, drill one 11/32" hole, 1-3/16" down and 1" out on the outside rib of blade. See diagram below.
- Step 3. Insert pointed end of clamp into coil of guide. Attach guide to rib using top hole of clamp. Secure assembly using supplied 5/16" x 1" bolt and locknut. Tighten until guide will stand alone perpendicular to road surface.
- Step 4. If hole is not pre-drilled, use lower hole of clamp as locator, drill bottom hole 11/32".
- Step 5. Bolt lower hole in place. Finish securing top bolt.
- Step 6. Attach other side following above steps.

Pictorial view supplied below. Remember to use standard methods and practices in attaching blade guides including wearing safety glasses during drilling.

PARTS LIST

59700 - BLADE GUIDE ASSEMBLY

ITEM	PART NO.	QUAN.	DESCRIPTION
1	59697	2	Blade Guide Rod, S-Hook & Flag
2	59694	1	Flag
3	59696	1	S-Hook
4	59691	1	Blade Guide Rod
5	59946	2	Clamp
6		4	Capscrew 5/16 - 18 x 1 Gr 2
7		4	Locknut 5/16 - 18 Nylon Insert



3009-7911

The following are registered® or unregistered™ Trade Marks of Douglas Dynamics, Inc.
WESTERN® ISARMATIC® Hydra-Turn® Roll-Action™ SnowKing™

Western reserves the right under its Product Improvement Policy to change construction or design details and furnish equipment when so altered without reference to illustrations or specifications used herein.