



**WESTERN PRODUCTS**  
7777 NORTH 73RD STREET  
P.O. BOX 23045  
MILWAUKEE, WISCONSIN 53223

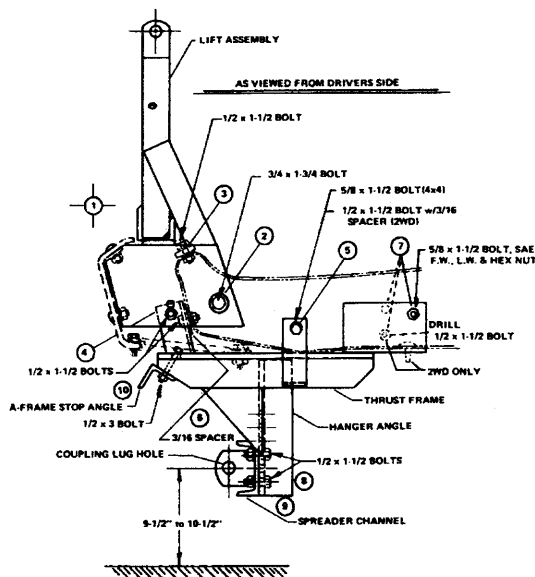
**dd** A DIVISION OF DOUGLAS DYNAMICS, INC.

Box No. 59770  
Model No. 1360 Ford  
F-100/150 4 x 4 &  
F-250 2WD 73 & Later  
Bronco 4 x 4 78 & Later  
Front Frame Lift-Mount

## INSTALLATION INSTRUCTIONS

RECOMMENDED FASTENER TORQUE CHART				
SIZE	TORQUE IN FOOT POUNDS			
	GRADE 2	GRADE 5	GRADE 8	
1/4 - 20	6	9	13	
5/16 - 18	11	18	28	
3/8 - 16	19	31	46	
3/8 - 24	24	46	68	
7/16 - 14	30	50	75	
1/2 - 13	45	75	115	
9/16 - 12	66	110	165	
5/8 - 11	93	150	225	
3/4 - 10	150	250	370	
7/8 - 9	202	378	591	
1 - 8	300	583	893	

These torque values apply to lift-mount fasteners except those noted in the instructions where motion is desired.



**IMPORTANT:** Read instructions before assembling. Bolts should be finger tight until the installation is completed to allow sufficient adjustment for aligning holes and locating parts to vehicle frame. Preventive maintenance can prevent accidents. Regularly inspect all components and repair or replace any worn, loose or damaged parts immediately. Remember to use standard methods and practices when attaching snowplow including wearing safety glasses during drilling. It is recommended that Heavy Duty Front Coil Springs and Auxiliary Front Air Springs be used for additional front suspension support.

Install snowplow as follows:

### LIFT ASSEMBLY:

1. Remove the bumper from the vehicle leaving diagonal brace attached to bumper.
2. Align the slot in the lift side plate to the 3/4" slot in the frame. Fasten with 3/4" x 1-3/4" bolts, flatwashers and locknuts.
3. Secure tab at top of side plate to frame using 1/2" x 1-1/2" bolts, flatwashers and locknuts.

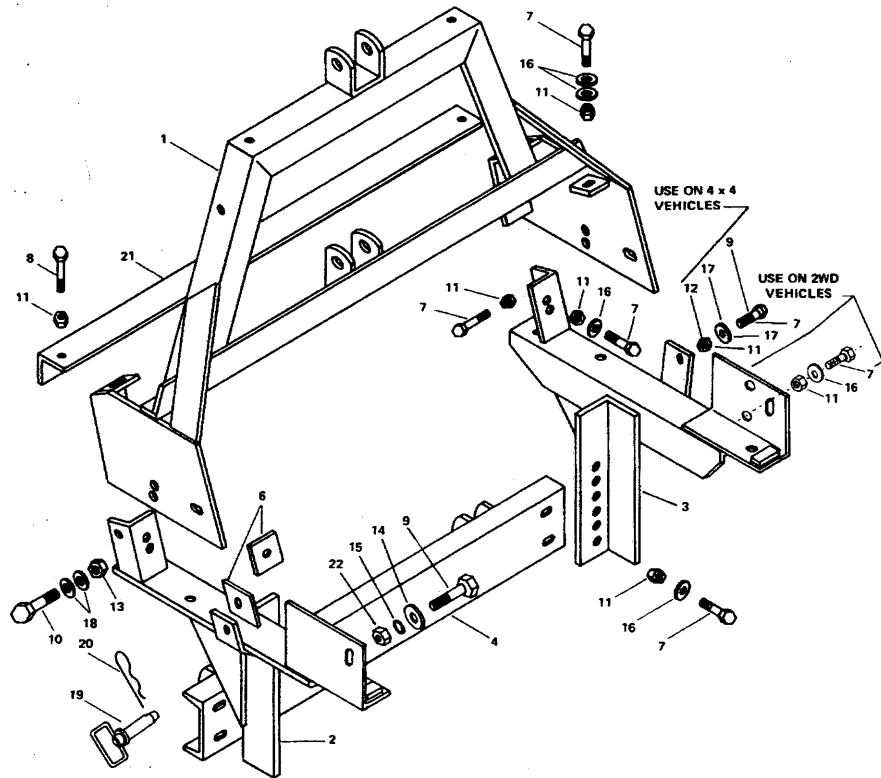
### MOUNT ASSEMBLY:

4. Install right and left thrust frames by aligning the hole in the angle bracket to the lower hole in lift side plate.  
**NOTE:** With reference to para. 11, insert existing bumper brace fastener through hole in thrust frame as shown. Attach with 1/2" x 1-1/2" bolts and locknuts.
5. Bolt formed side support bar of thrust frame to vehicle frame using 5/8" x 1-1/2" bolts, flatwashers and locknuts.  
2WD - Place a 3/16" spacer between frame and support bar and fasten with 1/2" x 1-1/2" bolts and locknuts.
6. Place another 3/16" spacer between front angle clip and vehicle frame. Fasten with 1/2" x 1-1/2" bolts, flatwashers and locknuts.
7. Fasten formed attaching plates to vehicle frame as follows: On 4WD: insert 5/8" x 1-1/2" bolt with 5/8" SAE flatwasher from inside of vehicle frame through an opening in the first crossmember. Secure using 5/8" lockwasher and hex nut. On 2WD: the driver's side is secured the same as the 4WD. Curb side plate has a clearance hole for a vacuum tank bracket fastener, using a hole 2" below as a guide, drill a 1/2" diameter hole through the vehicle frame. **CAUTION:** Check inside of frame to insure drill clearance to any gas line, brake line and/or wiring. Secure using 1/2" x 1-1/2" bolt with flatwasher and locknut to inside of frame.
8. Locate spreader channel to hanger angles of thrust frames maintaining 9-1/2" to 10-1/2" from road to center of coupling lugs. Attach using 1/2" x 1-1/2" bolts, flatwashers and locknuts.
9. Hanger angles should be shortened to provide maximum road clearance if other than lowest set of holes is used.
10. Fasten A-Frame stop angle to front of thrust frames with one leg forward and pointing down. Use 1/2" x 3" bolts and locknuts.
11. Place bumper to lift frame unit, and braces from bottom flange of bumper to bolts placed in thrust frame per Step No. 4. Secure using existing nuts.

**TIGHTEN ALL BOLTS TO CORRESPONDING TORQUE VALUES NOTED IN FASTENER TORQUE CHART.**

**HYDRAULICS:** Mount the Hydraulic System, using the instructions furnished in the Hydraulic Carton.

Box No. 59770  
Model No. 1360 Ford  
F-100/150 4 x 4 &  
F-250 2WD 73 & Later  
Bronco 4 x 4 78 & Later  
Front Frame Lift-Mount  
**DIAGRAM & PARTS LIST**

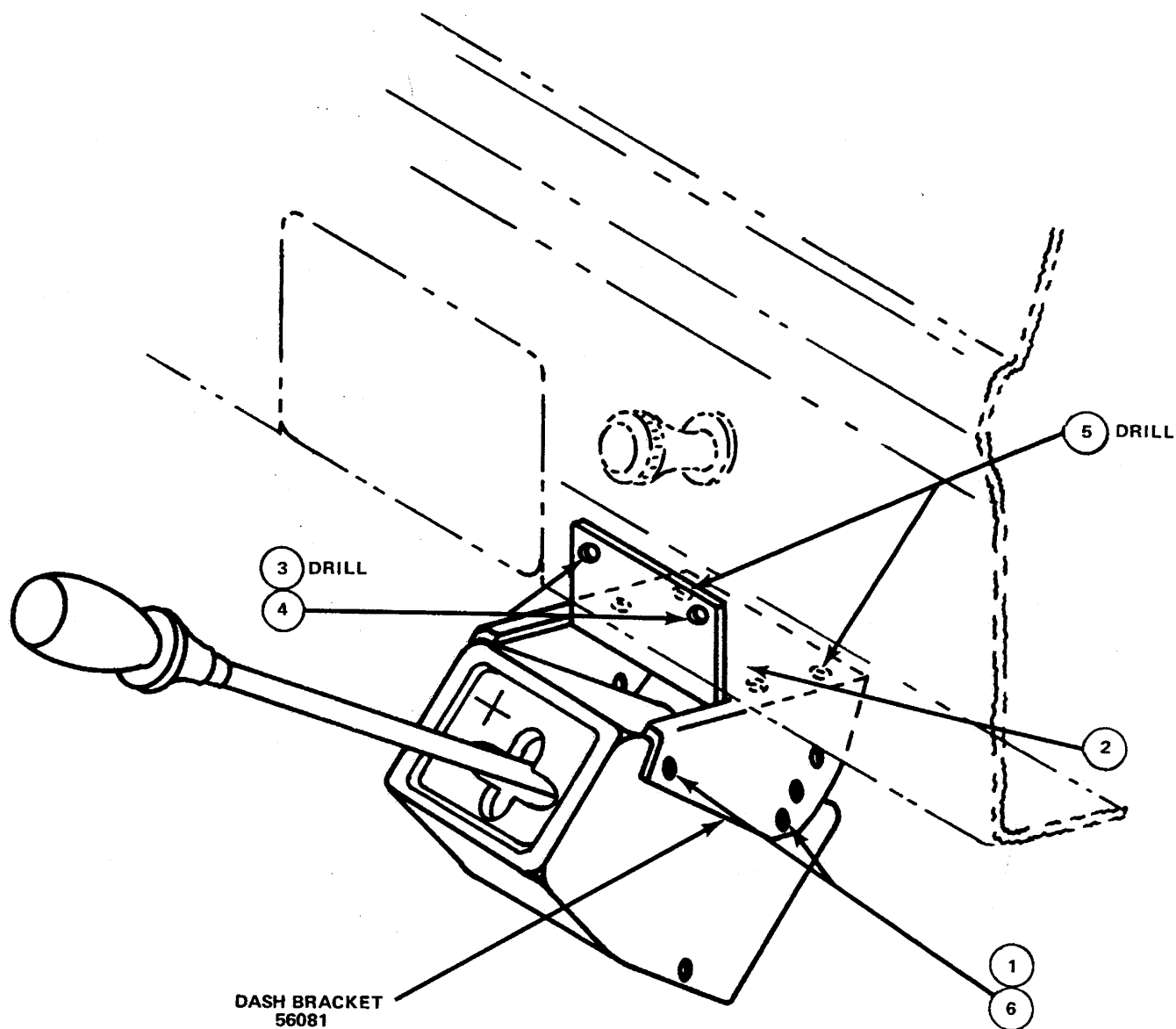


3035-8312  
3036-8312

Item	Part No.	Quan.	Description
1	53616	1	Lift Frame Unit
2	59769	1	Mount Thrust Frame Unit -(Driver's Side)
3	59775	1	Mount Thrust Frame Unit -(Curb Side)
4	53620	1	Spreader Channel Unit
6	59325	4	Spacer - 3/16"
7	90100	13	Capscrew - 1/2"-13 x 1-1/2" Long - Grade 5
8	90105	2	Capscrew - 1/2"-13 x 3" Long - Grade 5
9	90127	4	Capscrew - 5/8"-11 x 1-1/2" Long - Grade 5
10	90153	2	Capscrew - 3/4"-10 x 1-3/4" Long - Grade 5
11	91335	15	Locknut - 1/2"-13 - Nylon Insert Type
12	91337	4	Locknut - 5/8"-11 - Nylon Insert Type
13	91338	2	Locknut - 3/4"-10 - Nylon Insert Type
14	91139	2	Flat Washer - 5/8" - SAE
15		2	Lock Washer - 5/8"
16		11	Flat Washer - 1/2"
17		2	Flat Washer - 5/8"
18		4	Flat Washer - 3/4"
19	93028	2	Hitch Pin - 1" x 3-1/2" Long
20	91965	2	Hairpin Cotter - 5/32" x 2-15/16" O/A Length
21	59580	1	A-Frame Stop Angle
22		2	Hex Nut - 5/8"-11

**NOTE:** Only those items indicated with a **Part Number** are available for Service.

**INSTALLATION INSTRUCTIONS  
FOR — IIIa CONTROL  
TO VEHICLE INSTRUMENT PANEL  
FORD**



1. Secure dash bracket to the IIIa Control using 4-No. 8 x 5/8" long hex head screws.
2. Locate IIIa Control to the right of the ash tray or wherever is most convenient. The lower half of the bracket should fit flat against the bottom flange of the dash. Verify that IIIa Control lever will clear vehicle components in all positions and for adequate drill clearance before drilling holes.
3. Mark and drill two 1/8" holes in the dash to align to the top holes in the bracket.
4. Remove the bracket from the IIIa Control and loosely fasten it to the dash using 2-No. 10 sheet metal screws and lock washers.
5. Mark and drill two holes into the bottom flange of the dash to align to the holes in the bracket. Secure using No. 10 sheet metal screws and lock washers. Tighten all four screws securely.
6. Place IIIa Control into bracket and fasten in desired position.

# **INSTALLATION INSTRUCTIONS FOR 59700 BLADE GUIDE ASSEMBLY**

The following instructions simply outline the attachment of this blade guide assembly.

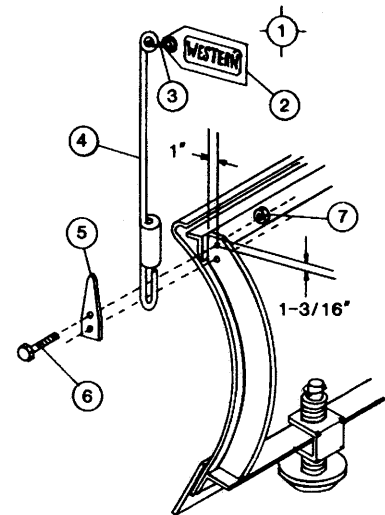
- Step 1. Lower blade to ground level.
- Step 2. If hole is not pre-drilled, drill one 11/32" hole, 1-3/16" down and 1" out on the outside rib of blade. See diagram below.
- Step 3. Insert pointed end of clamp into coil of guide. Attach guide to rib using top hole of clamp. Secure assembly using supplied 5/16" x 1" bolt and locknut. Tighten until guide will stand alone perpendicular to road surface.
- Step 4. If hole is not pre-drilled, use lower hole of clamp as locator, drill bottom hole 11/32".
- Step 5. Bolt lower hole in place. Finish securing top bolt.
- Step 6. Attach other side following above steps.

Pictorial view supplied below. Remember to use standard methods and practices in attaching blade guides including wearing safety glasses during drilling.

## **PARTS LIST**

### **59700 - BLADE GUIDE ASSEMBLY**

ITEM	PART NO.	QUAN.	DESCRIPTION
1	59697	2	Blade Guide Rod, S-Hook & Flag
2	59694	1	Flag
3	59696	1	S-Hook
4	59691	1	Blade Guide Rod
5	59946	2	Clamp
6		4	Capscrew 5/16 - 18 x 1 Gr 2
7		4	Locknut 5/16 - 18 Nylon Insert



3009-7911

The following are registered® or unregistered™ Trade Marks of Douglas Dynamics, Inc.  
**WESTERN® ISARMATIC® Hydra-Turn® Roll-Action™ SnowKing™**

Western reserves the right under its Product Improvement Policy to change construction or design details and furnish equipment when so altered without reference to illustrations or specifications used herein.