



WESTERN PRODUCTS
7777 NORTH 73RD STREET
P.O. BOX 23045
MILWAUKEE, WISCONSIN 53223

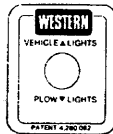
A DIVISION OF DOUGLAS DYNAMICS, INC.

Harness/Bracket Kit
5 WIRE
Use with 60750
Headlamp Kit — 5 Wire
WIRING DIAGRAM

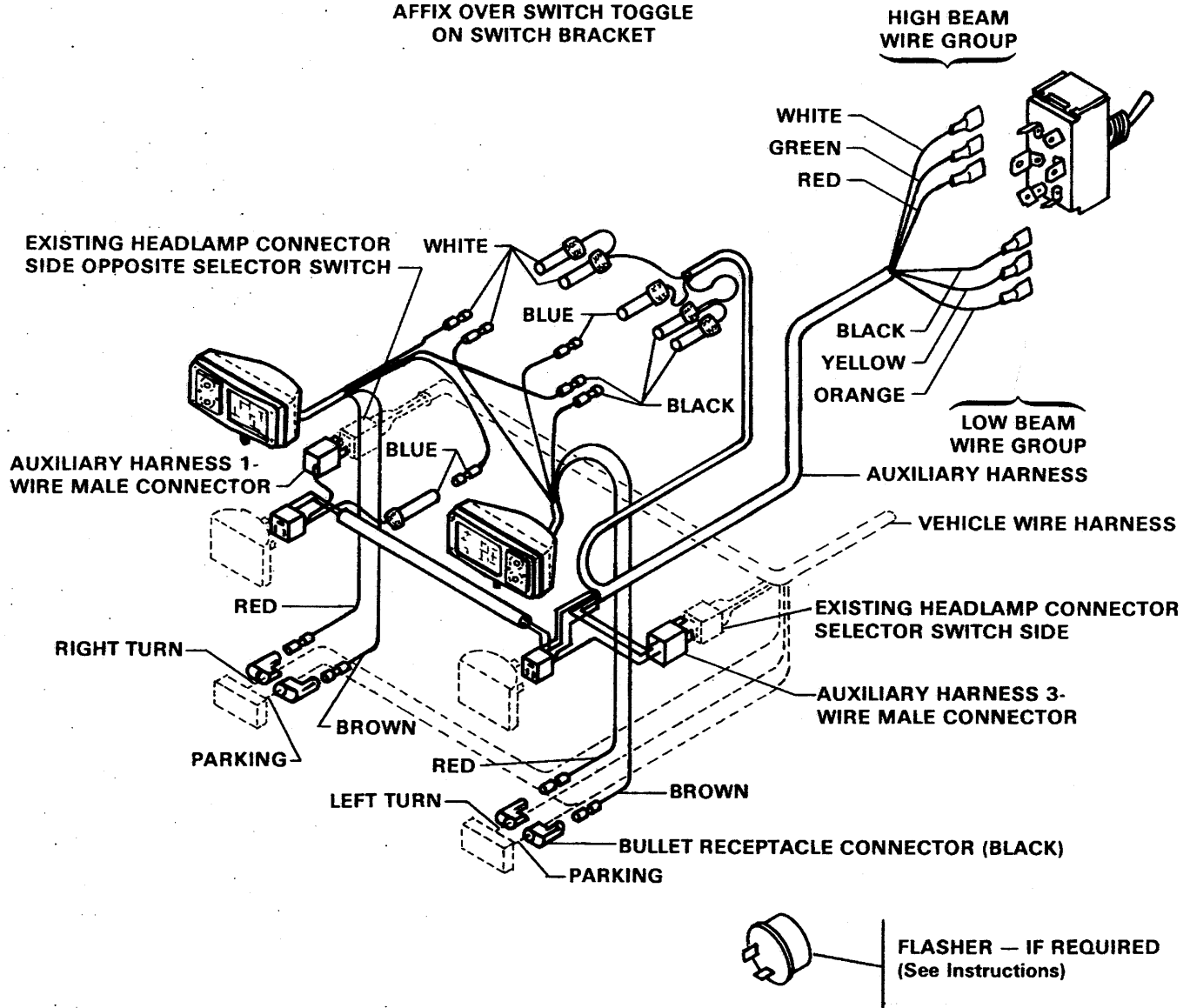
WITH PLUG-IN LIGHT HARNESS

DO NOT CUT INTO VEHICLE HEADLAMP WIRING

CHECK YOUR LOCAL
REGULATIONS FOR
COMPLIANCE IN
YOUR AREA.



AFFIX OVER SWITCH TOGGLE
ON SWITCH BRACKET



5 WIRE

Use with 60750

Headlamp Kit — 5 Wire

INSTALLATION INSTRUCTIONS

This Harness/Bracket Kit, when used with a 60750 Headlamp Kit, includes plug-in wiring harness, connectors and switch to simplify installation and provide performance equal to existing vehicle system. Always check to be certain the vehicle lights work properly before beginning the installation.

1. Assemble light brackets to lift frame as shown on parts diagram.
2. Assemble headlamps to brackets with headlamp swivel above brackets and loosely secured with lock washer and nut. Pass leads thru grille. Secure leads to brackets with cable ties.
3. Identify park and turn lamp wires on both sides of vehicle.

CAUTION: Before proceeding, disconnect battery ground cable to avoid possible electrical equipment damage, electrical fire or personal injury.

Attach a black self stripping bullet receptacle connector to each wire. Route auxiliary headlamp red and brown wires to receptacles. Insert **RED** wire bullets into **TURN** wire receptacles and **BROWN** wire bullets into **PARK** wire receptacles.

4. Switch location: Light Switch Bracket to driver's side of dash or switch to Illa Control Floor Bracket if furnished with Lift-Mount. Light Switch Bracket installations: **CHECK** for adequate clearance behind dash before drilling. Use bracket as a template to drill two (2) 1/8" holes. Secure bracket with No. 10 x 1" sheet metal screws and lock washers. Drill 1/2" hole thru the firewall near switch location.
5. In engine compartment, insert end of Plug-In Harness with 6 loose wires thru firewall hole drilled in Step 4. Route 3-wire male connector to headlamp on same side of vehicle as switch. Route 1-wire male connector along radiator bulkhead or over radiator shroud to opposite side headlamp. Bring auxiliary harness and auxiliary headlamp black, white, and blue wire connectors to a common location behind the grille. **MATCHING** wire colors, black to black, white to white, blue to blue, insert headlamp wire bullets into harness receptacles. (NOTE: 1A & 2A 5W Harness P.N. 60895 — blue wire bullet receptacles are adjacent to 6-wire headlamp connectors.)
6. Vehicle Headlamp Connections:
Switch Side of Vehicle —
Remove existing connector from headlamp and couple to matching auxiliary harness 3-wire male connector. Couple auxiliary harness headlamp connector to headlamp.
Side Opposite Switch Location —
Remove existing connector from headlamp and couple to matching auxiliary harness 1-wire male connector. Couple auxiliary harness headlamp connector to headlamp.
Both Sides —
Secure any VEHICLE harness headlamp connectors not connected to auxiliary harness with cable ties to prevent electrical grounding. **CAUTION:** Always protect wires to prevent electrical short circuits or fires.
7. Connect the six loose wire terminals of the auxiliary harness to switch as shown in wiring diagram, Page 1. Install Switch in a vertical position. Affix Switch Label over switch.
8. Cut Grommet, place it around harness and insert into firewall hole drilled in Step 4. **CAUTION:** Always protect wires to prevent electrical short circuits or fires.

DO NOT REPLACE DIRECTIONAL LIGHT FLASHER unless noted in Lift-Mount Installation Instructions.

FINAL CHECK: When electrical circuits are completed, reconnect the vehicle battery. Check the operation of all vehicle lights. The vehicle and auxiliary headlamps are controlled by the selector switch. The park/turn lamps operate with vehicle lights. **Place selector switch in PLOW position and with plow in RAISED position, aim auxiliary headlamps** in accordance with SAE J599 Lighting Inspection Code (See Service Bulletin SP 608) and any federal, state, or local regulations that apply.

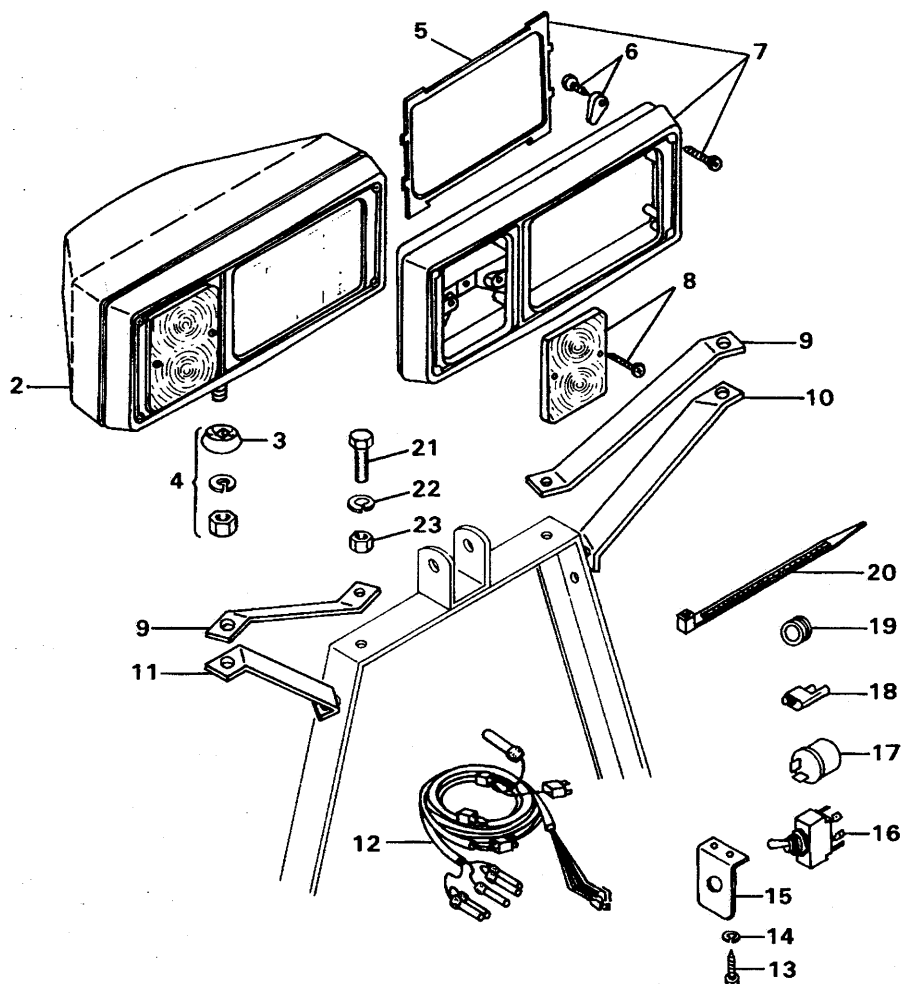
Finally, secure harness and wires with cable ties so they do not interfere with hot or moving parts in engine compartment.

NOTE: Auxiliary and vehicle headlamps will use headlamp fuses as designed by vehicle manufacturer (If one fuse is blown, vehicle or auxiliary headlamp on that side will be dimmer than a headlamp with a good fuse).

CAUTION: Auxiliary lights provide added safety and are a NHTSA requirement. **BEFORE TRAVELING POSITION BLADE SO IT DOES NOT BLOCK HEADLAMP BEAM. DO NOT CHANGE BLADE POSITION WHILE TRAVELING.**

Harness/Bracket Kit
5 WIRE
 Use with 60750
 Headlamp Kit — 5 Wire
DIAGRAM & PARTS LIST

1 NOT SHOWN



Item	Part No.	Quantity	Description
1	60751	1	Headlamp Assembly — 5 Wire — Driver Side
2	60752	1	Headlamp Assembly — 5 Wire — Curb Side
3	49012	2	Headlamp Swivel
4	49151	2	Headlamp Swivel and Hardware Assembly
5	49210	1	Headlamp Gaskets (1 Pair)
6	49201	2	2E Retaining Fingers (4) and Fasteners (4)
7	49203	2	Bezel, Headlamp Gasket and Fasteners (4) (Driver or Curb Side)
8	49202	2	Park/Turn Lens and Fasteners (2)
NOTE: Refer to Lift-Mount Box Parts List for any Special Bracket Requirements.			
9	59349	2	Light Bracket Bar
10	60005	1	Light Bracket Brace Bar — Driver Side
11	60006	1	Light Bracket Brace Bar — Curb Side
NOTE: Match Harness to Vehicle Headlamp Type.			
12	60501	1	Plug-In Harness 2B/2D 5W
	60893	1	Plug-In Harness 1A & 2A 5W
13		2	Tapping Screw — No. 10 x 1" Long
14		2	Lock Washer — No. 10
15	60230	1	Light Switch Bracket
16	53845	1	Switch
17	60109	1	Heavy Duty Flasher 12 Volt (If Required)
18	59224	4	Bullet Receptacle Connector
19	25301	1	Grommet
20	59223	6	Cable Tie
21		4	Capscrew — 3/8"-16 x 1-1/4" Long
22		4	Lock Washer — 3/8"
23		4	Hex Nut — 3/8"-16
NOT SHOWN			
	59038	1	Switch Label
		2	Headlamp — 2E1 — Plastic
		4	Park/Turn Signal Bulb — (Trade Number 1157)

NOTE: Only those items listed with a **PART NUMBER** are available for service.

The following are registered® or unregistered™ Trade Marks of Douglas Dynamics, Inc.
WESTERN® ISARMATIC® Hydra-Turn® Roll-Action™ PRO-GUARD™

Western reserves the right under its Product Improvement Policy to change construction or design details and furnish equipment when so altered without reference to illustrations or specifications used herein.

Printed in U.S.A.