



WESTERN PRODUCTS  
7777 NORTH 73RD STREET  
P.O. BOX 23045  
MILWAUKEE, WISCONSIN 53223



A DIVISION OF DOUGLAS DYNAMICS, INC.

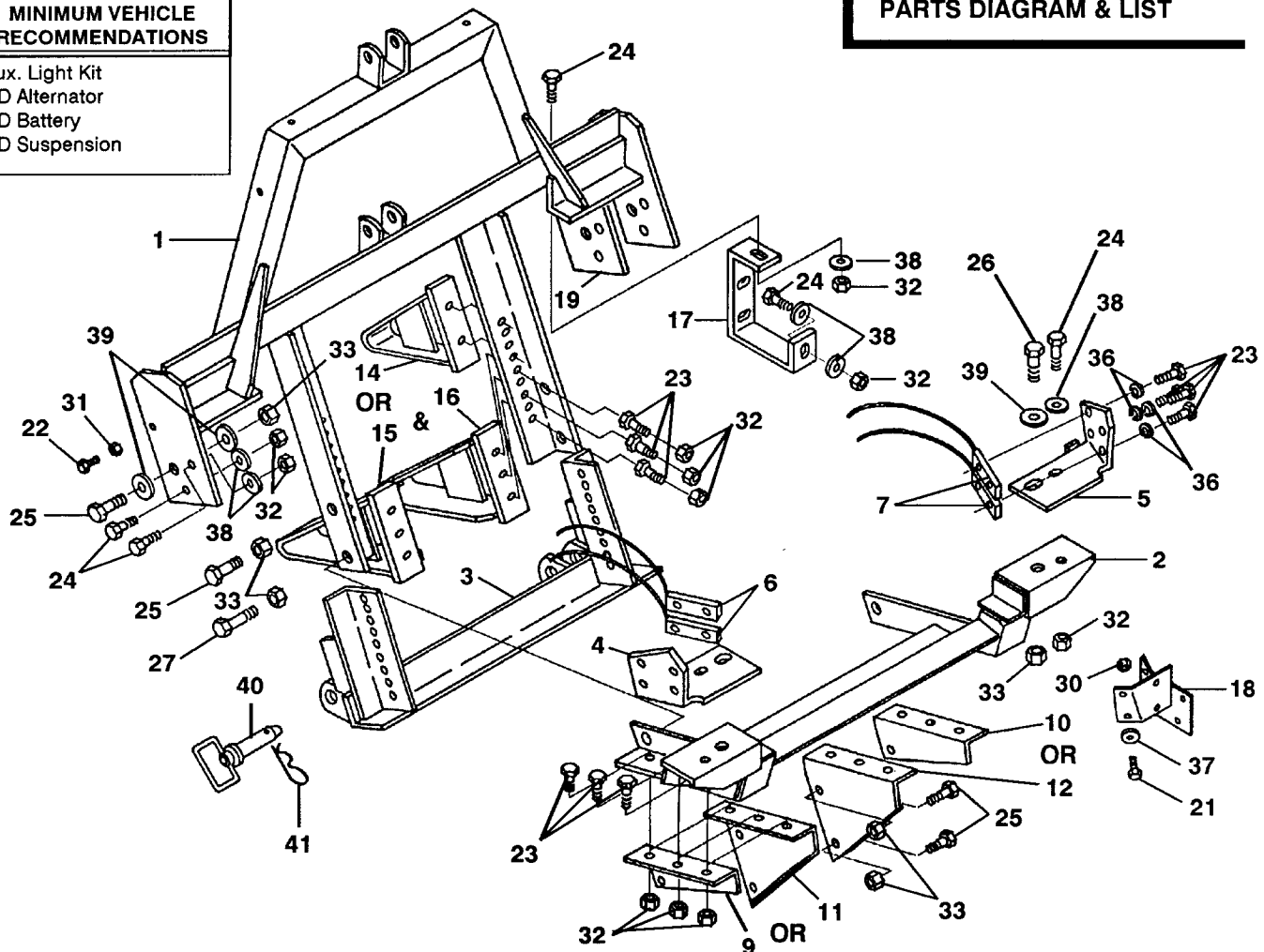
Box No. 61610  
Model No. 1290  
Ford F-250/F-350 4x4  
& F-350 2WD  
1992 & Later

September 28, 1991

**MINIMUM VEHICLE  
RECOMMENDATIONS**

Aux. Light Kit  
HD Alternator  
HD Battery  
HD Suspension

**PARTS DIAGRAM & LIST**



ITEM	PART NO.	QTY.	DESCRIPTION
1	61712	1	LIFT FRAME 1260, 1270, 1290
2	61641	1	THRUST FRAME
3	59925	1	SPREADER
4	61642	1	MOUNT DR
5	61643	1	MOUNT CU
6	61652	2	NUT BAR DR
7	61653	2	NUT BAR CU
9	61646	1	BRACE - SHORT DR
10	61647	1	BRACE - SHORT CU
11	61700	1	BRACE - LONG DR
12	61701	1	BRACE - LONG CU
14	61644	2	A-FRAME STOP - SHORT
15	61645	1	A-FRAME STOP - LONG DR
16	61717	1	A-FRAME STOP - LONG CU
17	61650	2	BUMPER BRACKET
18	60495	1	EVAPORATOR BRACKET
19	61698	2	SHIM
21	90020	4	5/16-18X1 HX CS G2 ZP
22	90039	2	3/8-16X1 HX CS G5 ZP
23	90100	20	1/2-13X1-1/2 HX CS G5 ZP

ITEM	PART NO.	QTY.	DESCRIPTION
24	90101	10	1/2-13X1-3/4 HX CS G5 ZP
25	90128	6	5/8-11X1-3/4 HX CS G5 ZP
26	90129	2	5/8-11X2 HX CS G5 ZP
27	90130	2	5/8-11X2-1/4 HX CS G5 ZP
30	91332	4	5/16-18 PT HX LK NUT NYIS ZP
31	91333	2	3/8-16 PT HX LK NUT NYIS ZP
32	91335	22	1/2-13 PT HX LK NUT NYIS ZP
33	91337	10	5/8-11 PT HX LK NUT NYIS ZP
36	91205	8	1/2 SP LK WASHER ZP
37	91102	4	5/16 PLAIN WASHER TY A STD ZP
38	91105	12	1/2 PLAIN WASHER TY A STD ZP
39	91106	6	5/8 PLAIN WASHER TY A STD ZP
40	93028K	2	HITCH PIN 1" X 3-1/2"
41	91965K	2	HAIRPIN COTTER 5/32"

**Abbreviations**

CS	Capscrew	NYIS	Nylon Insert
CU	Curb Side	PT	Prevailing Torque
DR	Driver Side	SP	Spring
G	Grade	STD	Standard
HX	Hex	TY	Type
LK	Lock	ZP	Zinc Plate

Recommended Fastener Torque Chart (Ft.-Lbs.)				
Size	SAE Grade 2	SAE Grade 5	SAE Grade 8	
1/4-20	6	9	13	
5/16-18	11	18	28	
3/8-16	19	31	46	
3/8-24	24	46	68	
7/16-14	30	50	75	
1/2-13	45	75	115	
9/16-12	66	110	165	
5/8-11	93	150	225	
3/4-10	150	250	370	
7/8-9	202	378	591	
1-8	300	583	893	

Metric Grade 8.8 (Ft.-Lbs.)			
Size	Torque	Size	Torque
M 6	7	M 12	60
M 8	17	M 14	95
M 10	35	M 16	155

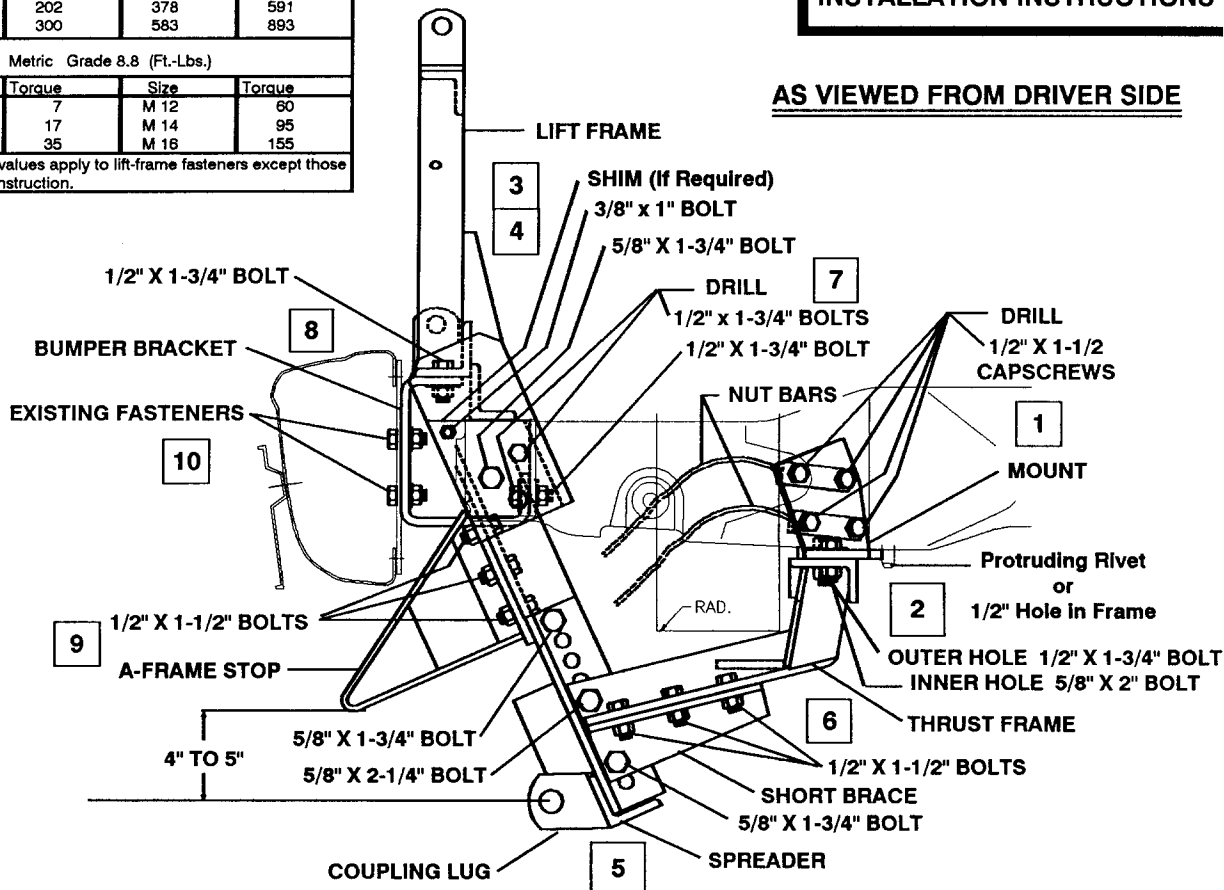
These torque values apply to lift-frame fasteners except those noted in the instruction.

**NOTE; DIRECT HYDRA-TURN® HOSES AND FITTINGS AWAY FROM STOPS AND PINCH POINTS**

Box No. 61610  
Model No. 1290  
Ford F-250/F-350 4x4  
& F-350 2WD  
1992 & Later

## INSTALLATION INSTRUCTIONS

### AS VIEWED FROM DRIVER SIDE



**IMPORTANT:** Read instructions before assembling. Bolts should be finger tight until the installation is completed. Preventive maintenance can prevent accidents. Use standard methods and practices when attaching snowplow including wearing safety glasses during drilling. Install snowplow as follows:

Remove the bumper, with brackets attached, from the vehicle frame.

#### 1. MOUNT - DR & CU

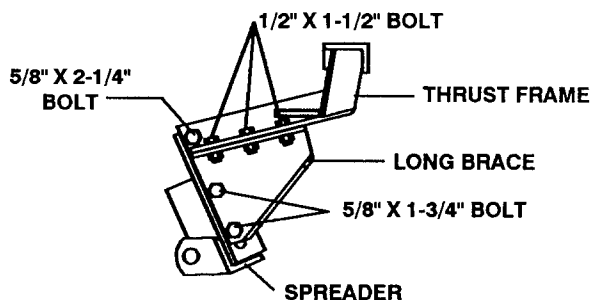
Place (2) mounts tight to outside and bottom of vehicle frame and against long protruding rivet. (Vehicles without frame rivets, locate mounts to front edge of 1/2" holes in bottom of vehicle frame rails.) Clamp in place. Use mounts as a template to drill (4) 9/16" holes per side through vehicle frame. Install (2) nut bars per side to inside of vehicle frame aligning to drilled holes. Fasten mounts to nut bars with (8) 1/2" x 1-1/2" capscrews and (8) lock washers. Tighten capscrews to corresponding torque chart value.

#### 2. THRUST FRAME

Attach thrust frame loosely to mounts with (2) 1/2" x 1-3/4" bolts, (2) flat washers to slots and (2) locknuts at outer holes, and (2) 5/8" x 2" bolts, (2) flat washers to slots and (2) locknuts at inner holes.

**If the vehicle has an evaporator canister that interferes with the lift or thrust frame, remove canister and install furnished bracket using existing fasteners. Secure evaporator canister to the rear side of bracket using furnished (4) 5/16" x 1" bolts, (4) flat washers to slots and (4) locknuts.**

Continued on page 3.



3. **SHIM**

Place lift frame onto vehicle frame horns. If gap between lift frame side plates and vehicle frame permit, secure one or both shims to inside of lift frame side plates with a 3/8" x 1" bolt and locknut per shim while keeping the 1/2" bolt holes aligned.

4. **LIFT FRAME**

Align large holes in lift frame side plates to large holes (or slots) in vehicle frame. Fasten with (2) 5/8" x 1-3/4" bolts, (4) flat washers to lift frame and vehicle frame and (2) locknuts.

5. **SPREADER**

Place spreader between lift frame angles and thrust frame angles, **keeping the center of the coupling lugs between 9-1/2" and 10-1/2" from the road.** Attach using (2) 5/8" x 2-1/4" bolts and (2) locknuts through thrust frame, spreader and lower holes of lift frame angles.

6. **BRACE - DR & CU**

If top holes in lift frame angles align to spreader holes, insert (2) 5/8" x 1-3/4" bolts and (2) locknuts.

Fasten short or long braces (determined by height of spreader) to underside of thrust frame angles with (6) 1/2" x 1-1/2" bolts and (6) locknuts and to spreader with (2 or 4) 5/8" x 1-3/4" bolts and (2 or 4) locknuts.

Tighten all bolts to corresponding torque chart values starting with thrust frame to mounts, then braces to thrust frame and spreader, spreader to lift frame and lift frame to vehicle frame.

7. **SECURING LIFT FRAME**

Drill (2) 1/2" holes per side through vehicle frame using lift frame side plates as a template and secure with (4) 1/2" x 1-3/4" bolts, (4) flat washers to inside of vehicle frame and (4) locknuts.

8. **BUMPER BRACKET**

Attach furnished (2) bumper brackets to underside of lift frame cross angle with (2) 1/2" x 1-3/4" bolts, (2) flat washers to slots and (2) locknuts. Secure furnished brackets to vehicle bumper mounts with (2) 1/2" x 1-3/4" bolts, (4) flat washers to slots and (2) locknuts.

9. **A-FRAME STOP**

Position long A-frame stops against front of lift frame angles with offset towards center of vehicle and formed end of stops 4" to 5" above the center line of the coupling lug holes. Secure with (6) 1/2" x 1-1/2" bolts and (6) locknuts. **NOTE:** Use short A-frame stops on F-350 2WD with super cool options. Use quantity of 4 fasteners to secure.

10. Attach existing bumper with brackets to furnished bumper brackets using the existing fasteners. Air deflector may be left off vehicle (retain for installation should mount be removed from vehicle) or notch air deflector for coupling lug clearance. If reinstalling deflector, use existing fasteners.

**TIGHTEN ALL BOLTS TO CORRESPONDING TORQUE CHART VALUES.**

**LIGHT KIT ASSEMBLY** — Use Box No.60740 Headlamp Kit — 4 Wire and 61790 Harness/Bracket Kit - HB5. Mount toggle switch in IIIa control floor bracket.

**NOTE:** Assemble and install balance of snowplow per instructions furnished with each respective assembly.

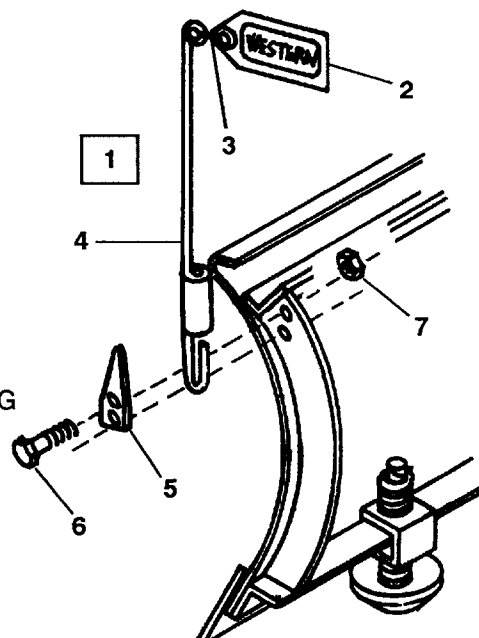
**See page 4 of these instructions for control installation instructions.**

## INSTALLATION INSTRUCTIONS FOR 59700 BLADE GUIDE ASSEMBLY

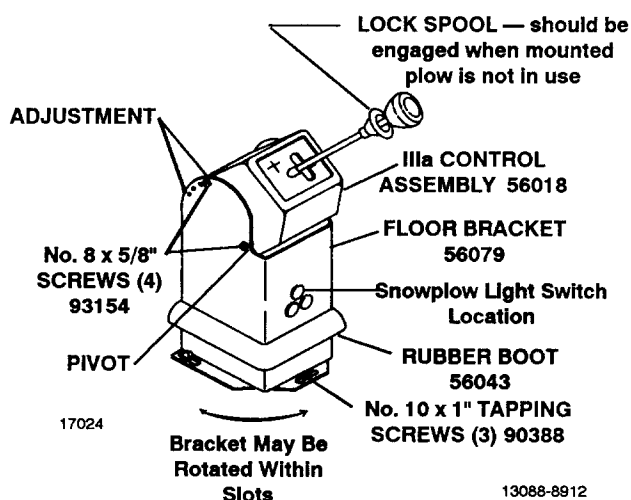
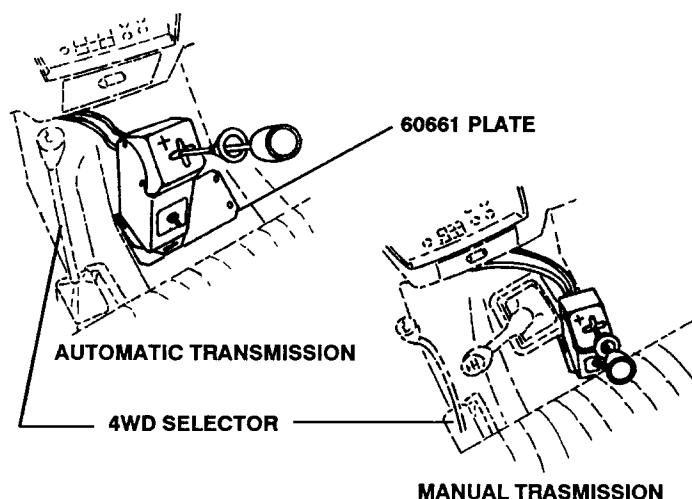
Insert pointed end of clamp into coil of Blade Guide Rod. Attach a Blade Guide Rod to each outer rib using 5/16" x 1" capscrews and locknuts as shown in diagram.

### PARTS LIST 59700 — BLADE GUIDE ASSEMBLY

Item	Part No.	Quan.	Description
1	59697	2	BLADE GUIDE ROD, S-HOOK & FLAG
2	59694K	1	BLADE GUIDE FLAG
3	59696	1	S-HOOK
4	59691	1	BLADE GUIDE ROD
5	59946	2	CLAMP
6	90020	4	5/16-18X1 HX CS G2 ZP
7	91332	4	5/16-18 PT HX LK NUT NYIS ZP



## INSTALLATION INSTRUCTIONS FOR — IIIa CONTROL TO VEHICLE TRANSMISSION TUNNEL



1. Remove top knock-out in front of floor bracket to receive light kit toggle switch. Temporarily assemble IIIa control to floor bracket using four (4) No. 8 x 5/8" long hex head screws.
2. Position assembly as shown in sketch above: AUTOMATIC TRANSMISSION on left side of tunnel - position plate under floor bracket and center plate on top of tunnel. - MANUAL TRANSMISSION on right side of tunnel. With seat in forward position, verify that IIIa control lever will clear all vehicle components.
3. CHECK underneath hole locations for wires or other interference before drilling. Using holes in plate as a template, drill five (5) 9/64" holes. OR Using bracket as template, drill 9/64" holes in center of each slot (3). Drilling in center of slots will allow bracket to be rotated to desired position. Loosely attach floor bracket with three (3) No. 10 x 1" tapping screws and lock washers. Secure remaining two holes in plate with one screw and lock washer from hydraulics box and another set from lift-mount box.
4. Remove IIIa control and slide rubber boot over top of bracket. Pass control cables through holes drilled in fire wall per hydraulic system instructions. Place control in bracket in desired position and secure. Rotate assembly to desired position and tighten mounting screws. Slide rubber boot down to cover screws.

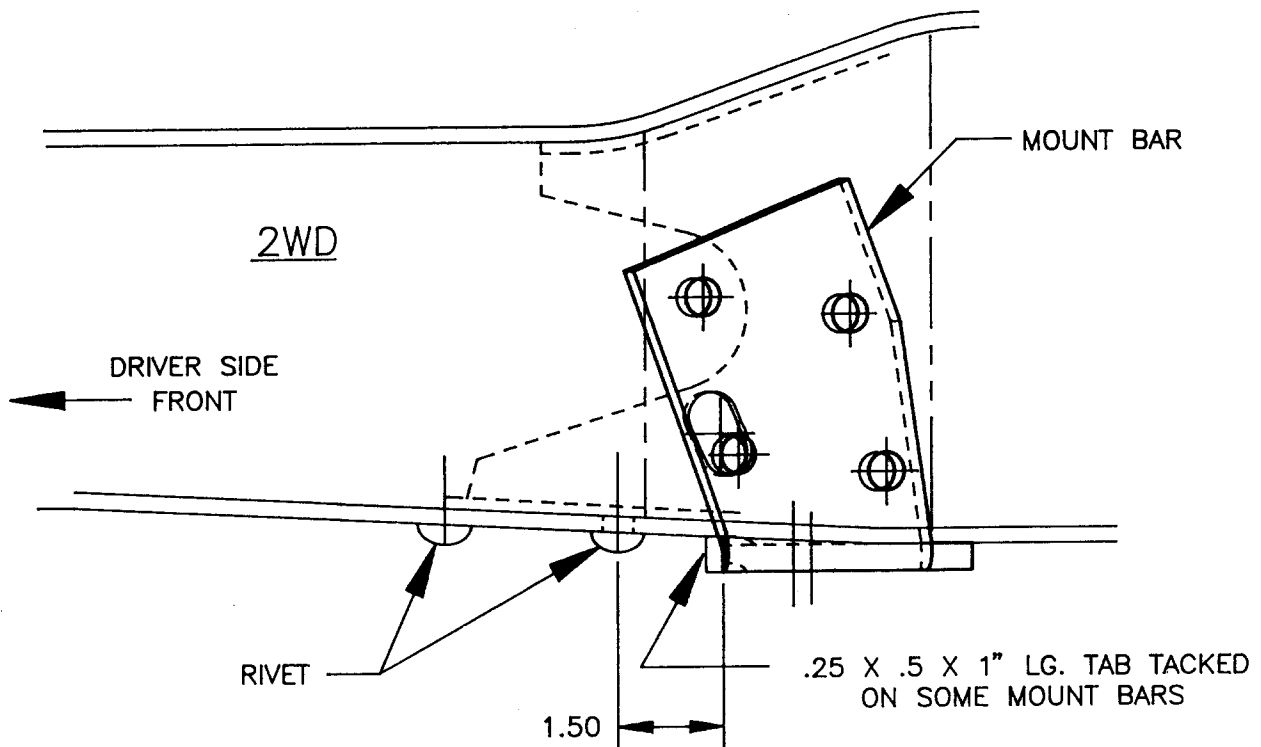
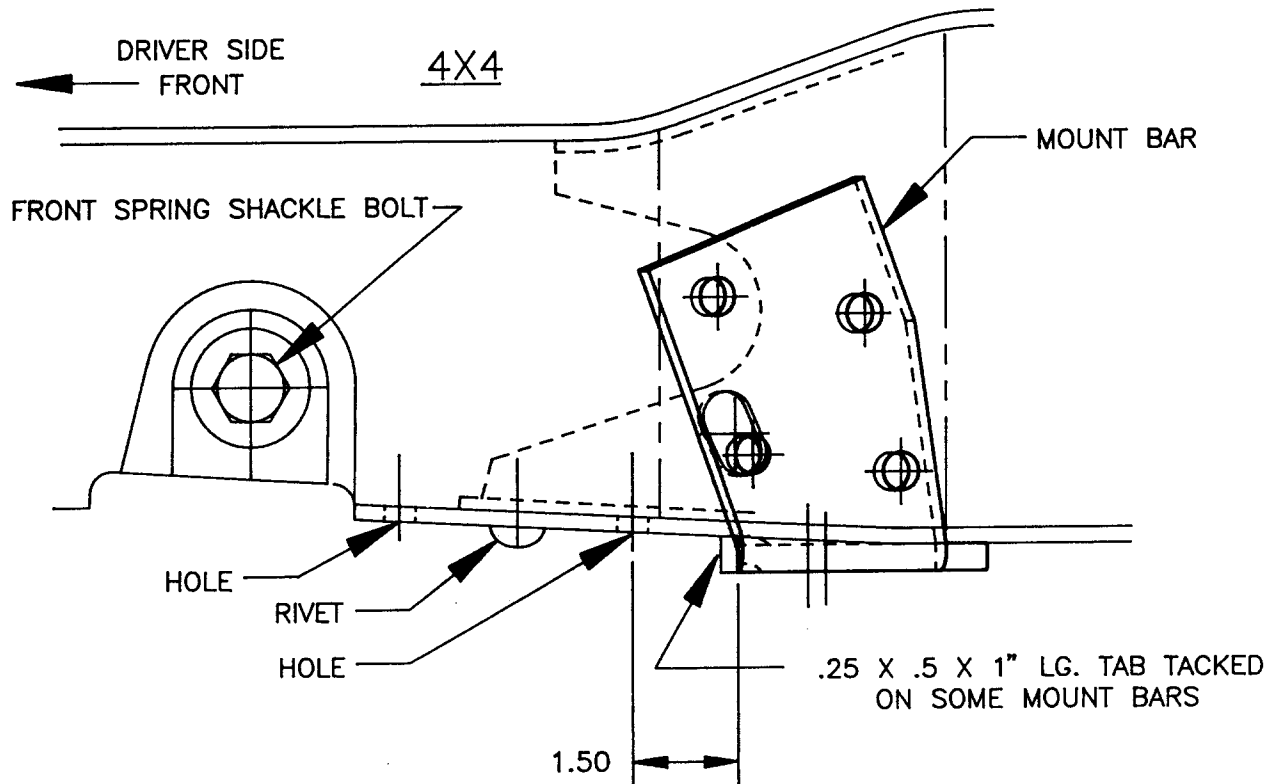
The following are registered® and unregistered™ Trade Marks of Douglas Dynamics, Inc.  
WESTERN® ISARMATIC® Hydra-Turn® UniMount® Roll-Action™ PRO-GUARD™

Western reserves the right under its Product Improvement Policy to change construction details and furnish equipment when so altered without reference to illustrations or specifications used herein.

Printed in U.S.A.

## MODEL 1290

### MOUNT BAR INSTALLATION FOR TRUCKS WITHOUT PROTRUDING RIVET OR HOLE.



POSITION MOUNT BAR TIGHT TO BOTTOM AND SIDE OF FRAME AS SHOWN.  
USE MOUNT BAR AS TEMPLATE AND DRILL FRAME WITH 9/16" DRILL.