

Lit. No. 64090
June 2, 2004



3519 TRUCK MOUNT

Installation Instructions

Chevy/GMC 1500 4X4 1999 & Later

⚠ CAUTION

Read this document before installing the snowplow.

⚠ CAUTION

See your WESTERN® outlet for application recommendations. The Selection List has specific vehicle and snowplow requirements.

SAFETY

SAFETY DEFINITIONS

⚠ WARNING

Indicates a potentially hazardous situation that, if not avoided, could result in death or serious personal injury.

⚠ CAUTION

Indicates a situation that, if not avoided, could result in damage to product or property.

NOTE: Identifies tips, helpful hints and maintenance information the owner/operator should know.

Warning and Caution Label

⚠ WARNING

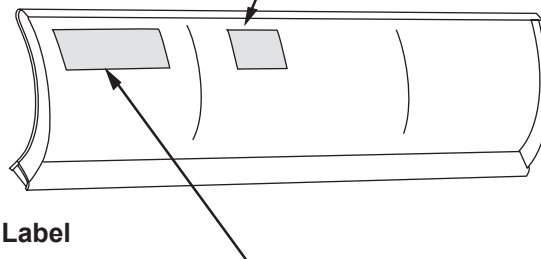
LOWER BLADE WHEN VEHICLE IS PARKED.
REMOVE BLADE ASSEMBLY BEFORE PLACING VEHICLE ON HOIST.
DO NOT EXCEED GVWR OR GAWR INCLUDING BLADE AND BALLAST.

⚠ CAUTION

READ *OWNER'S MANUAL* BEFORE OPERATING OR SERVICING SNOWPLOW.
TRANSPORT SPEED SHOULD NOT EXCEED 45 MPH. REDUCE SPEED UNDER ADVERSE TRAVEL CONDITIONS.
PLOWING SPEED SHOULD NOT EXCEED 10 MPH.
SEE YOUR SALES OUTLET FOR APPLICATION RECOMMENDATIONS.

WARNING/CAUTION & INSTRUCTION LABELS

Become familiar with and inform users about the warning and instruction labels on the back of the blade.



Instruction Label

UltraMount[®] SYSTEM INSTRUCTIONS

MOUNTING PLOW (ON)

Read Owner's Manual for complete instructions.

STEP 1

After seating plow horns in receiver brackets, pull Handle up; Shoe will lift off the ground.

Handle, Shoe, ON, OFF

STEP 2

Pull and hold Lock Pin out; then rotate Handle UP and release Lock Pin. It must lock into UPPER hole. Stand Hook must grip Receiver Pin.

Handle, Stand Hook, (Pull) Lock Pin, Receiver Pin, ON, OFF

STEP 3

Plug in electrical connections. Repeat steps 1 and 2 on other side of plow.

ON, OFF

REMOVING PLOW (OFF)

Read Owner's Manual for complete instructions.

STEP 3

Push down top of Shoe; Shoe will be on the ground. Repeat steps 2 and 3 on other side of plow. Back vehicle away.

Handle, Shoe, ON, OFF

STEP 2

Pull and hold Lock Pin out; then rotate Handle DOWN and release Lock Pin. It must lock into LOWER hole.

Handle, Stand Hook, (Pull) Lock Pin, Receiver Pin, ON, OFF

STEP 1

After lowering blade and turning control off, disconnect electrical connections.

ON, OFF

67796

Patents: US 4,999,935; 5,420,480; RE 35,700; 6,145,222; 6,209,231; 6,253,470; 6,526,677; CAN 2,060,425; patents pending.

SAFETY

SAFETY PRECAUTIONS

Improper installation and operation could cause personal injury, and/or equipment and property damage. Read and understand labels and the *Owner's Manual* before installing, operating, or making adjustments.

WARNING

Lower blade when vehicle is parked. Temperature changes could change hydraulic pressure, causing the blade to drop unexpectedly or damaging hydraulic components. Failure to do this can result in serious personal injury.

WARNING

Remove blade assembly before placing vehicle on hoist.

WARNING

The driver shall keep bystanders clear of the blade when it is being raised, lowered or angled. Do not stand between the vehicle and the blade or within 8 feet of a moving blade. A moving or falling blade could cause personal injury.

WARNING

Keep hands and feet clear of the blade and A-frame when mounting or removing the snowplow. Moving or falling assemblies could cause personal injury.

WARNING

Do not exceed GVWR or GAWR including blade and ballast. The rating label is found on driver-side vehicle door cornerpost.

CAUTION

Refer to the current selection list for minimum vehicle recommendations and ballast requirements.

CAUTION

To prevent accidental movement of the blade, always turn the ON/OFF switch to OFF whenever the snowplow is not in use. The control indicator light will turn off.

PERSONAL SAFETY

- Wear only snug-fitting clothing while working on your vehicle or snowplow.
- Do not wear jewelry or a necktie, and secure long hair.
- Wear safety goggles to protect your eyes from battery acid, gasoline, dirt and dust.
- Avoid touching hot surfaces such as the engine, radiator, hoses and exhaust pipes.
- Always have a fire extinguisher rated BC handy, for flammable liquids and electrical fires.

FIRE AND EXPLOSION

WARNING

Gasoline is highly flammable and gasoline vapor is explosive. Never smoke while working on vehicle. Keep all open flames away from gasoline tank and lines. Wipe up any spilled gasoline immediately.

Be careful when using gasoline. Do not use gasoline to clean parts. Store only in approved containers away from sources of heat or flame.

SAFETY

VENTILATION




WARNING

Vehicle exhaust contains deadly carbon monoxide (CO) gas. Breathing this gas, even in low concentrations, could cause death. Never operate a vehicle in an enclosed area without venting exhaust to the outside.

TORQUE CHART

CAUTION

Read instructions before assembling. Fasteners should be finger tight until instructed to tighten according to the torque chart. Use standard methods and practices when attaching snowplow including proper personal protective safety equipment.

Recommended Fastener Torque Chart (Ft.-Lb.)			
Size	 SAE Grade 2	 SAE Grade 5	 SAE Grade 8
1/4-20	6	9	13
5/16-18	11	18	28
3/8-16	19	31	46
3/8-24	24	46	68
7/16-14	30	50	75
1/2-13	45	75	115
9/16-12	66	110	165
5/8-11	93	150	225
3/4-10	150	250	370
7/8-9	150	378	591
1-8	220	583	893
Metric Grade 8.8 (Ft.-Lb.)			
Size	Torque	Size	Torque
M 6	7	M 12	60
M 8	17	M 14	95
M 10	35	M 16	155
These torque values apply to fasteners except those noted in the instruction.			

MOUNT INSTALLATION

REMOVE AIR DAM SECTION

Use a fine tooth saw blade to cut away a portion of the bumper lower air deflector directly under the front frame horns. Trim edges and remove excess material with a coarse file. If air deflector trimming is not acceptable, remove snap clips and air deflector from bumper. Save for reinstallation if snowplow mount is removed.

REMOVE TOW HOOKS

1. Remove side and bottom bolts holding tow hooks.
2. Remove tow hooks and save for use if plow mount is removed.

MOUNT FRAME

1. Make sure bottom hole in mount frame is aligned with hole in vehicle frame. **(See Photo 1.)**

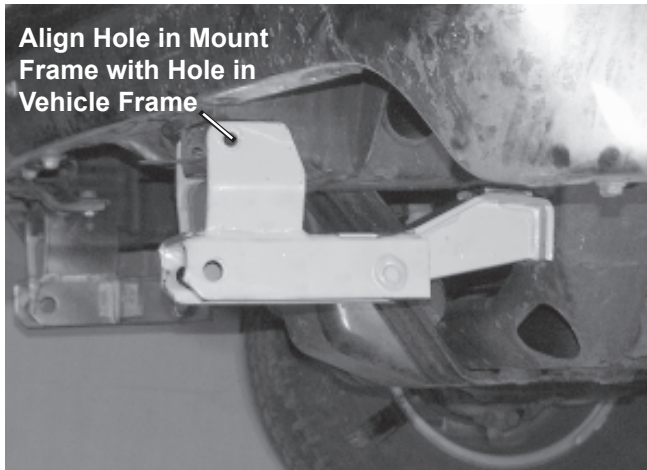


Photo 1

2. Hold rear of mount frame tight against vehicle frame and cross member, and mark hole locations with a sharp object (scribe or nail). Remove mount frame bracket and center punch holes previously marked. Drill a 9/16" diameter hole in each marked location through the vehicle frame and the cross member. **(See Photo 2.)**

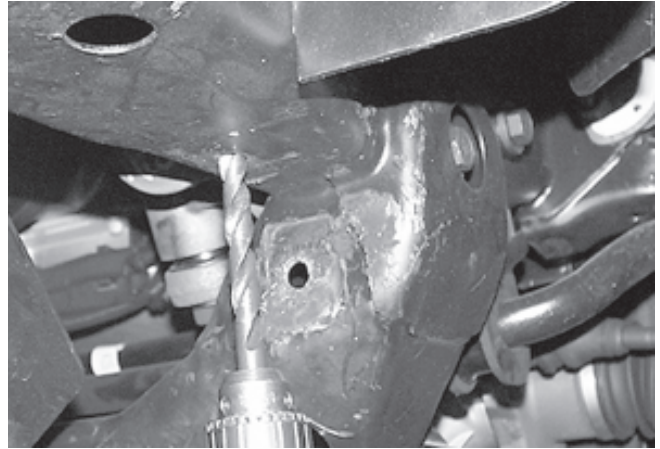


Photo 2

3. Attach the mount frame to the vehicle frame and the cross member through the drilled holes, using 1/2" bolt bars and 1/2" x 1-3/4" bolts, flat washers under heads and locknuts. **(See Photo 3.)**

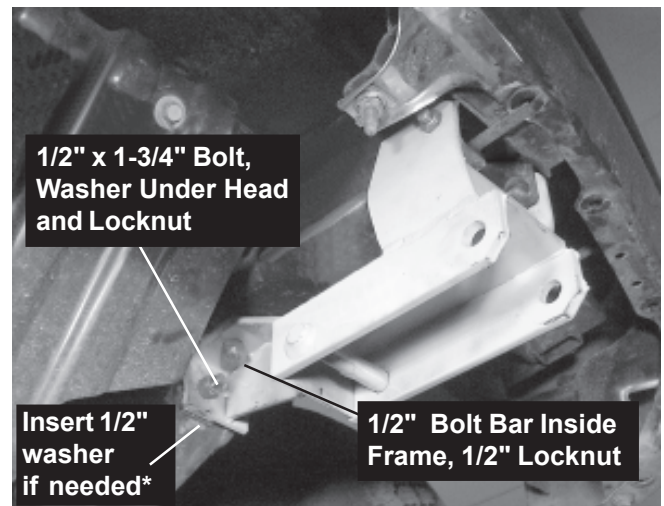


Photo 3

* If it was included with the mount kit, using a shim is also acceptable.

MOUNT INSTALLATION

4. Attach front of mount frame with 1/2" x 1-1/2" bolt and locknut through mount, vehicle frame and reinforcing plate. **(See Photo 4.)**

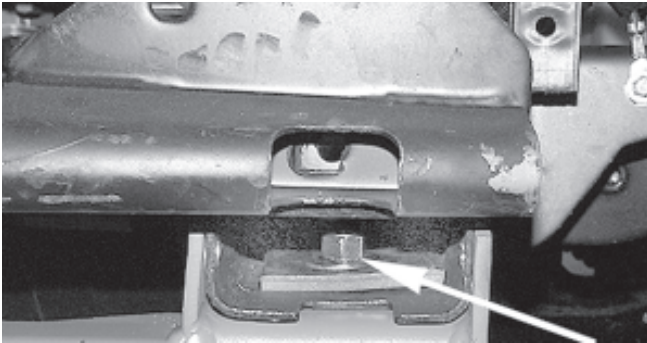


Photo 4

5. Attach mount frame to vehicle frame with two 1/2" x 1" bolts and locknuts. **(See Photo 5.)**

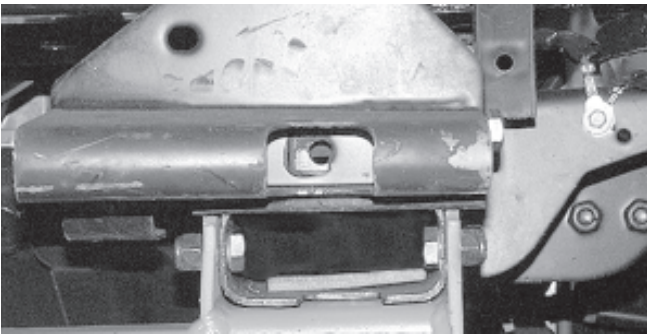


Photo 5

6. Repeat Steps 1–5 for the other mount frame.
7. Tighten all hardware per Torque Chart on page 3.

NOTE: After five to ten hours of snowplow usage, retorque all mount assembly fasteners.



WESTERN PRODUCTS
P.O. BOX 245038
MILWAUKEE, WI 53224-9538

 A DIVISION OF DOUGLAS DYNAMICS, L.L.C.

Western Products reserves the right under its product improvement policy to change construction or design details and furnish equipment when so altered without reference to illustrations or specifications used. Western Products and the vehicle manufacturer may require and/or recommend optional equipment for snow removal. Do not exceed vehicle ratings with a snowplow. Western Products offers a limited warranty on all snowplows and accessories. See separately printed page for this important information. The following are registered (®) trademarks of Douglas Dynamics, L.L.C.: UltraMount® and WESTERN®.